

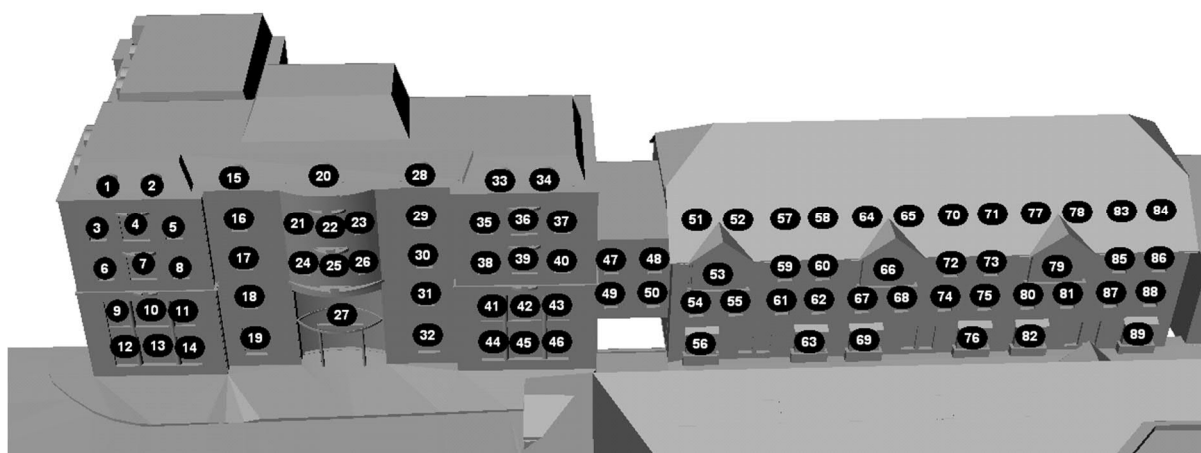
Appendix 11.A

Sunlight, Daylight and Shadowing

1. Figures

The following figures, Figure A.1 – Figure A.13, provide an overview of window locations for assessment buildings. These figures cross reference to Appendix A, Section 2 Tables which provide a detailed overview of the predicted sunlight, daylight and shadowing performance for baseline and proposed conditions.

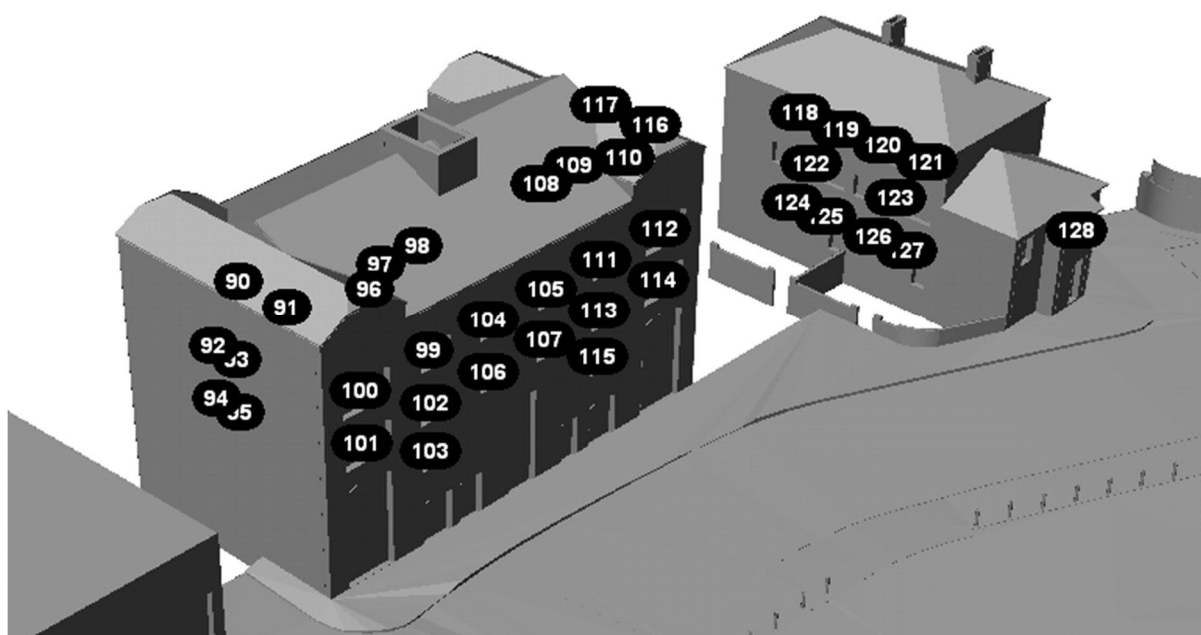
Figure A.1 – Windows for Buildings B1, B17, B18, B19, B20, B21 and B22



Windows in the figure above are associated with the following developments:

Building Reference	Address / Name	Window Numbers
B1	Gardner House, Bank Place	1 - 46
B17	1, Michael Street	47 - 56
B18	2, Michael Street	57 – 63
B19	3, Michael Street	64 - 69
B20	4, Michael Street	70 - 76
B21	5, Michael Street	77 - 82
B22	6, Michael Street	83 - 89

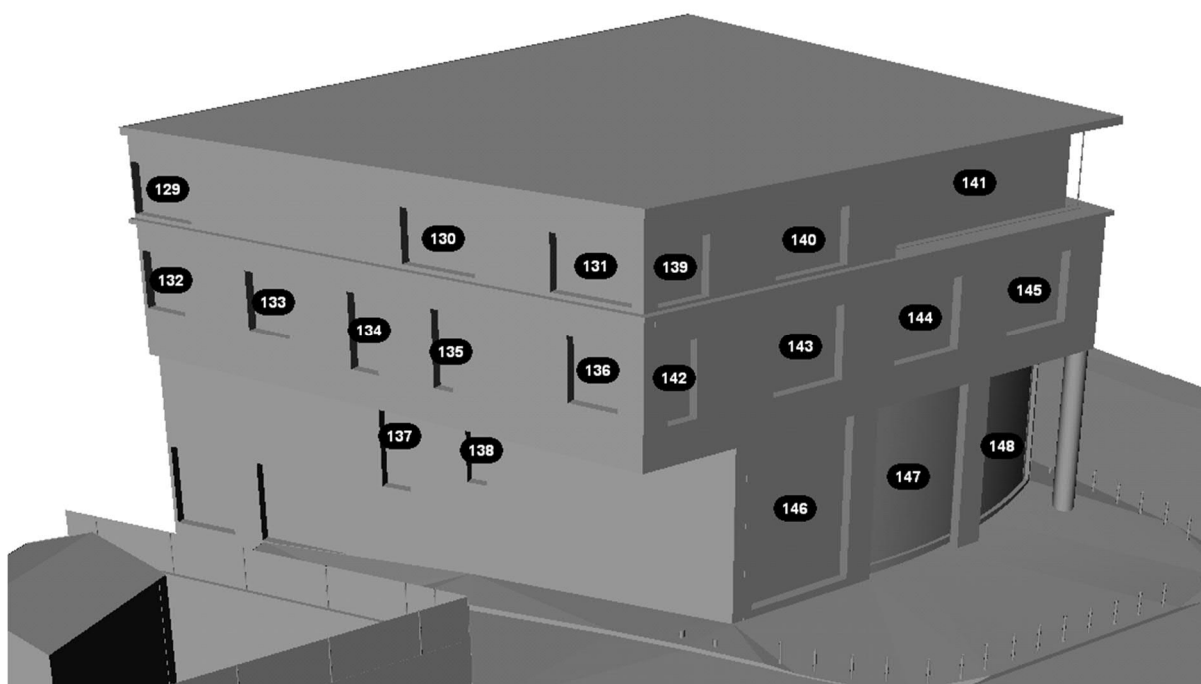
Figure A.2 – Windows for Buildings B23 and B24



Windows in the figure above are associated with the following developments:

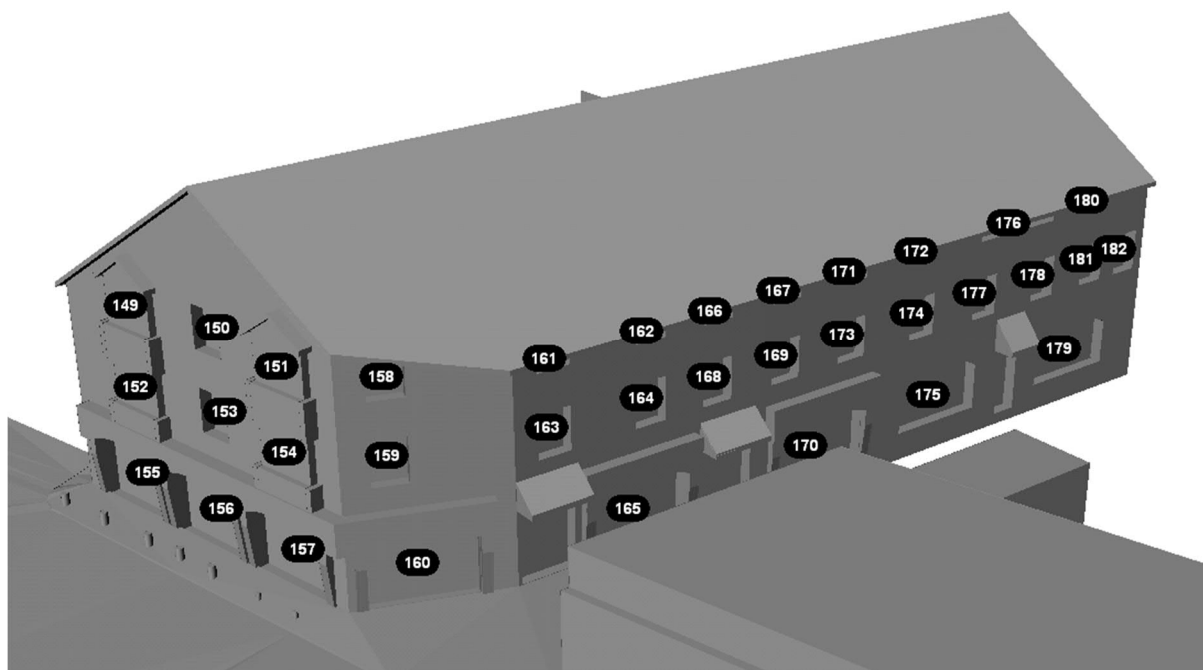
Building Reference	Address / Name	Window Numbers
B23	Westgate House, Michael Street	90 - 117
B24	St Michaels Court, Michael Street	118 - 128

Figure A.3 – Windows for Buildings B25



Building Reference	Address / Name	Window Numbers
B25	Barrow House, Michael Street	129 - 148

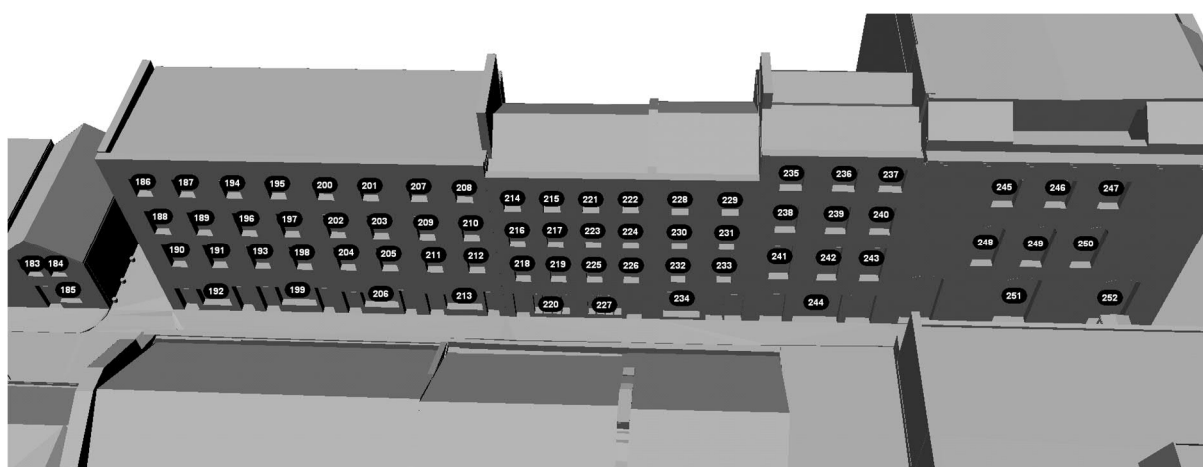
Figure A.4 – Windows for Buildings B3 and B16



Windows in the figure above are associated with the following developments:

Building Reference	Address / Name	Window Numbers
B3	Pillar House, Ellen Street	149 - 157
B16	Pillar House, Little Ellen Street	158 - 182

Figure A.5 – Windows for Buildings B4, B5, B6, B7, B8, B9, B0, B11, B12 and B13

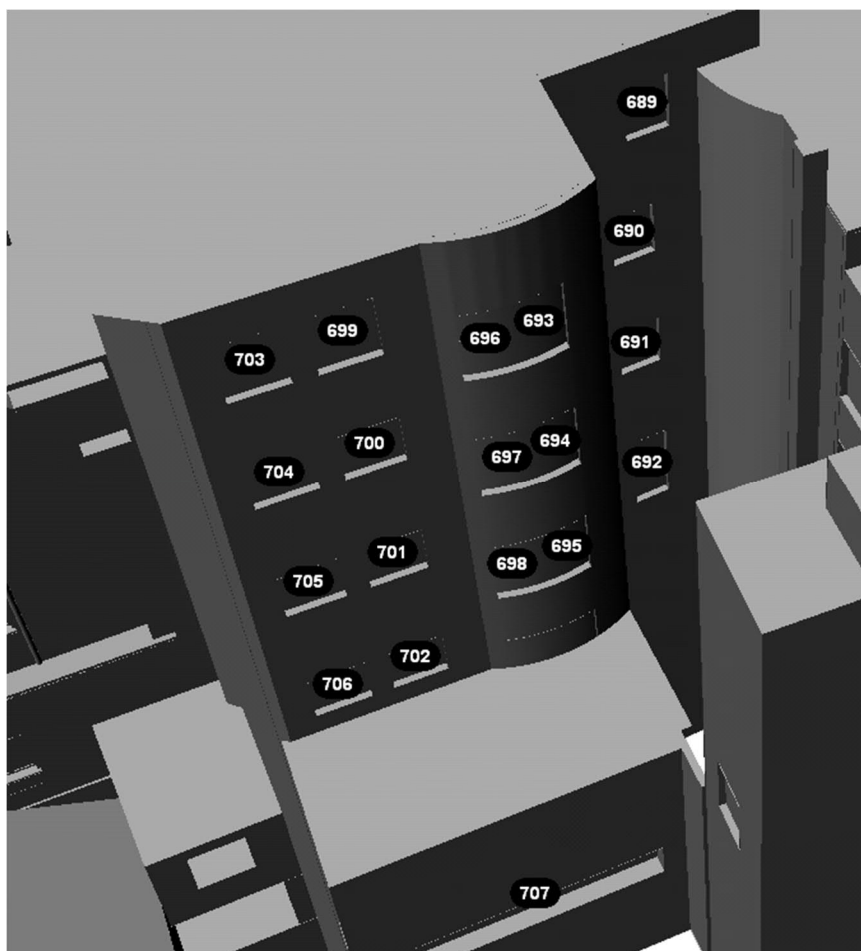


Windows in the figure above are associated with the following developments:

Building Reference	Address / Name	Window Numbers
B4	11, Ellen Street	183 - 185
B5	12, Ellen Street	186 - 192
B6	13, Ellen Street	193 - 199

B7	14, Ellen Street	200 - 206
B8	15, Ellen Street	207 - 213
B9	16, Ellen Street	214 - 220
B10	17, Ellen Street	221 - 227
B11	18, Ellen Street	228 - 234
B12	19, Ellen Street	235 - 244
B13	Ormston House, Ellen Street	245 - 252

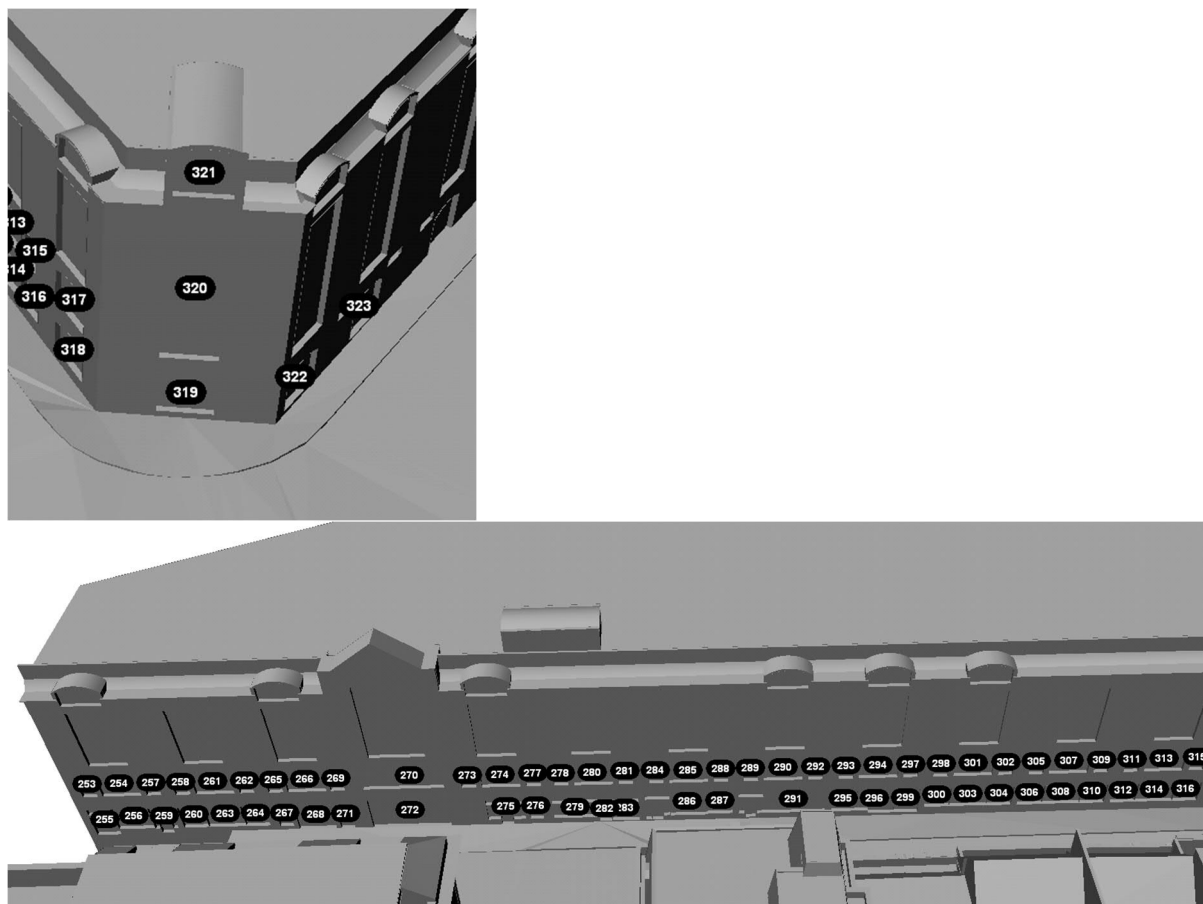
Figure A.6 – Windows for Buildings B30



Windows in the figure above are associated with the following developments:

Building Reference	Address / Name	Window Numbers
B30	Rutland House Apartments, Rutland Street	689 - 707

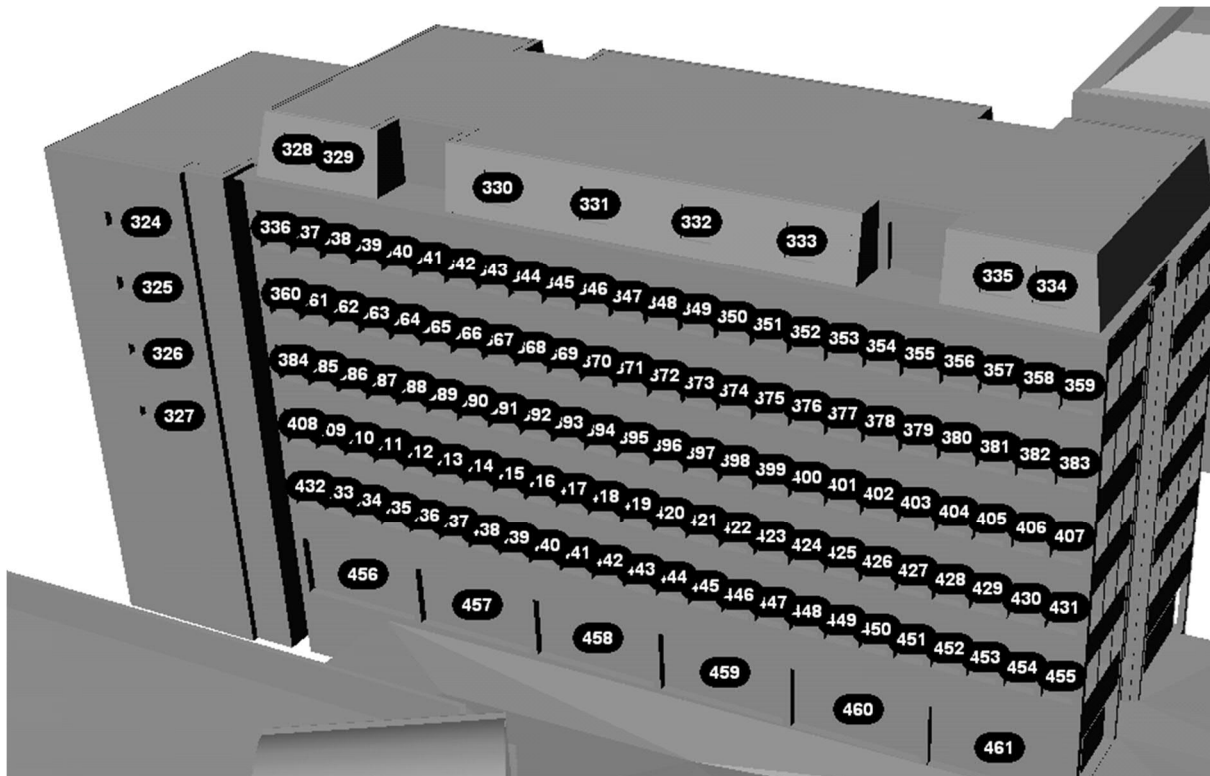
Figure A.7 – Windows for Buildings B26 and B14



Windows in the figure above are associated with the following developments:

Building Reference	Address / Name	Use
B14	Arthurs Quay SC, Francis Street	317 - 318
B26	Arthurs Quay SC, Patrick Street	319 - 323

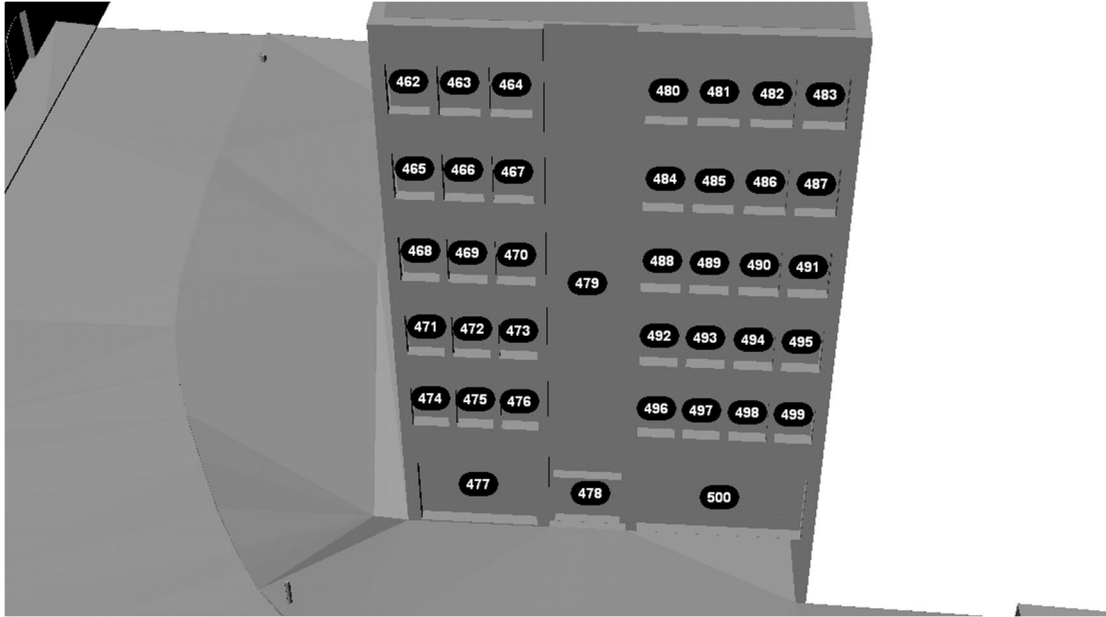
Figure A.8 – Windows for Buildings B15



Windows in the figure above are associated with the following developments:

Building Reference	Address / Name	Use
B15	Sarsfield House, Francis Street	324 - 461

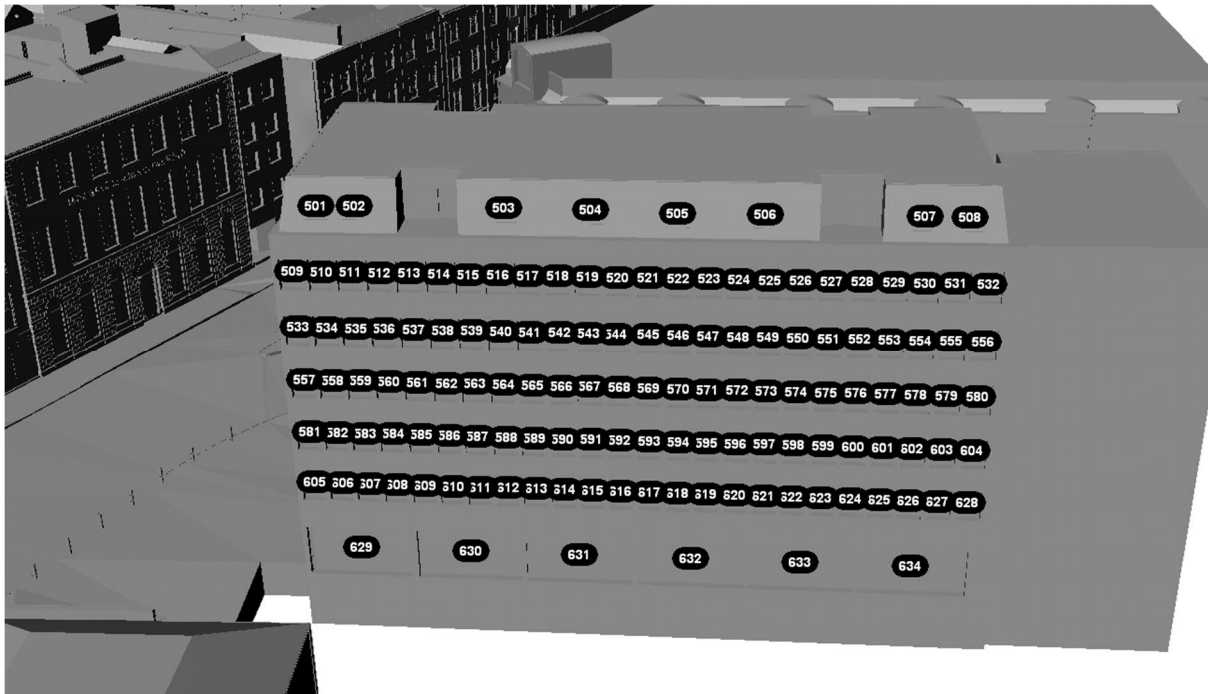
Figure A.9 – Windows for Buildings B27



Windows in the figure above are associated with the following developments:

Building Reference	Address / Name	Use
B27	Sarsfield House, Rutland Street	462 - 634

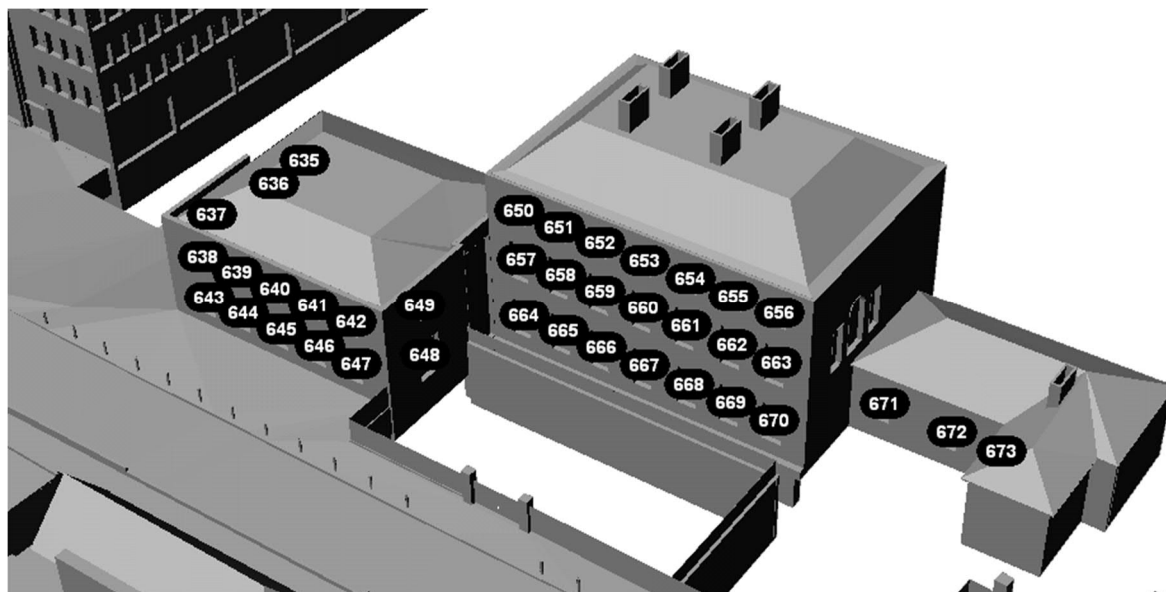
Figure A.10 – Windows for Buildings B15



Windows in the figure above are associated with the following developments:

Building Reference	Address / Name	Use
B15	Sarsfield House, Francis Street	501 - 634

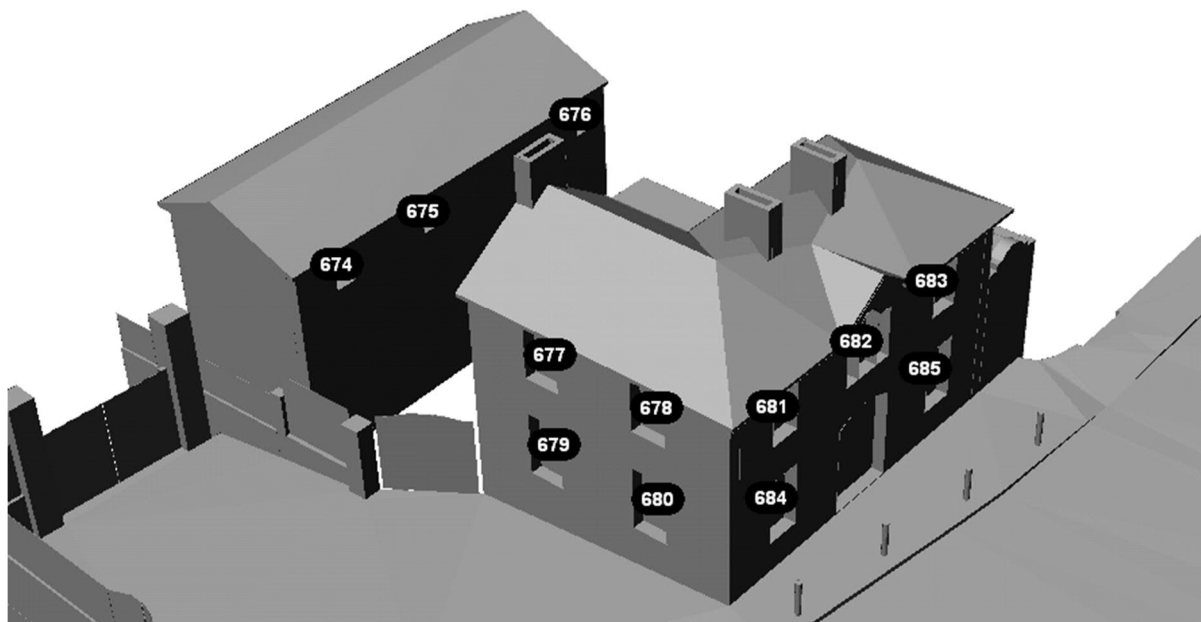
Figure A.11 – Windows for Buildings B28



Windows in the figure above are associated with the following developments:

Building Reference	Address / Name	Use
B28	Hunt Museum, Rutland Street	635 - 673

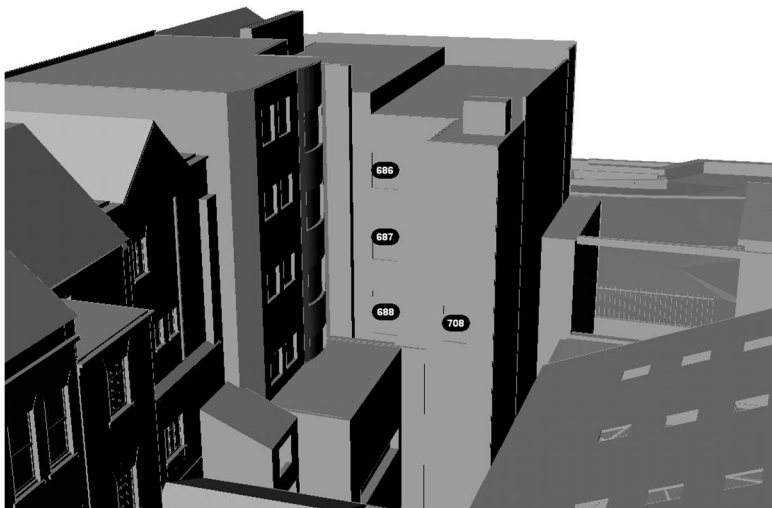
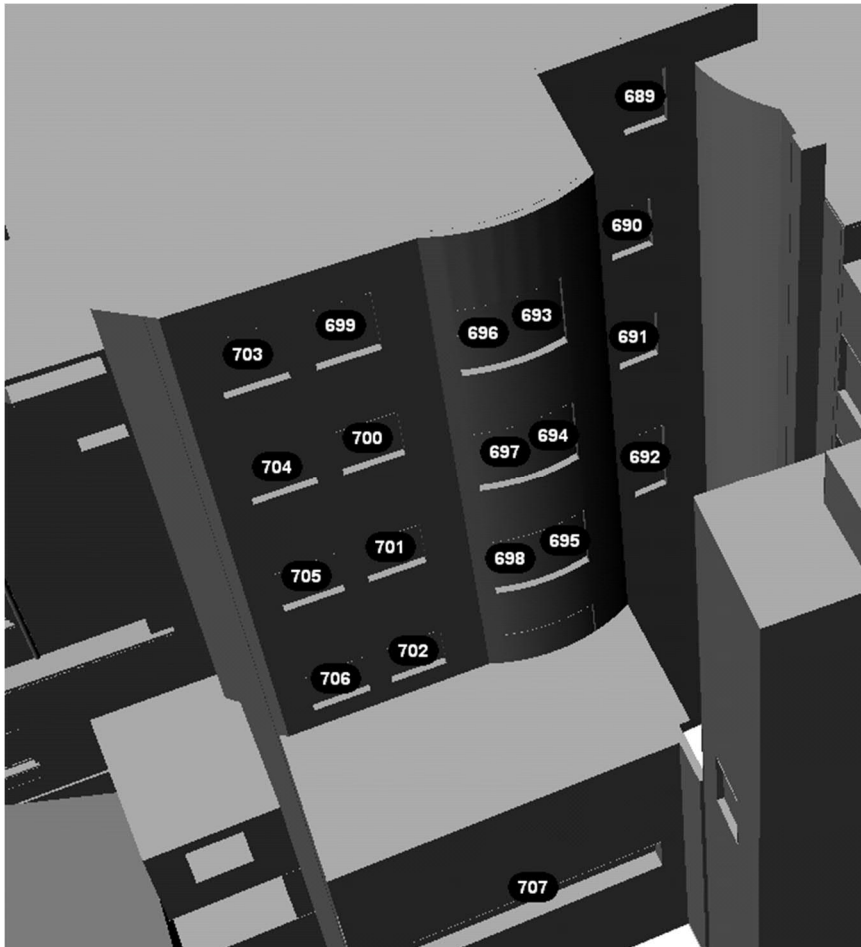
Figure A.12 – Windows for Buildings B29



Windows in the figure above are associated with the following developments:

Building Reference	Address / Name	Use
B29	Rutland House, Rutland Street	674 - 685

Figure A.13 – Windows for Building B30 and B2



Windows in the figure above are associated with the following developments:

Building Reference	Address / Name	Use
B2	7, Bank Place	686 – 688, 708
B29	Rutland House, Rutland Street	674 - 685

2. Performance Data, Buildings

The following tables provide an overview of window sunlight and daylight performance for baseline and proposed conditions for assessment buildings. This table cross references to Appendix A, Section 1 Figures and Tables which provide a detailed overview of the predicted sunlight, daylight and shadowing performance for baseline and proposed conditions.

Table A.1 – Performance Data for Sunlight and Daylight Assessment to Buildings

Window Number	Existing Conditions			BRE recommended minimum target			Proposed Condition			% Deviation from Minimum Target			Predicted Impacts			Significance of Effects		
	VSC	APSH	APSH Winter (WPSH)	VSC BRE Minimum Target	APSH BRE Minimum Target	APSH Winter BRE Minimum Target	VSC	APSH	APSH Winter	VSC	APSH	APSH Winter (WPSH)	VSC Expected Impact	APSH Expected Impact	APSH Winter Expected Impact	Greatest Impact	Sensitivity	Greatest Significance
B1 Gardner House, Bank Place																		
1	40	37	10	27	25	5	32	23	6	19%	-8%	20%	Negligible	N/A NorthFace	N/A NorthFace	Negligible	Low	Not Significant
2	40	37	10	27	25	5	31	23	6	15%	-8%	20%	Negligible	N/A NorthFace	N/A NorthFace	Negligible	Low	Not Significant
3	40	37	10	27	25	5	32	22	5	19%	-12%	0%	Negligible	N/A NorthFace	N/A NorthFace	Negligible	Low	Not Significant
4	40	37	10	27	25	5	31.5	23	6	17%	-8%	20%	Negligible	N/A NorthFace	N/A NorthFace	Negligible	Low	Not Significant
5	40	37	10	27	25	5	30.5	23	6	13%	-8%	20%	Negligible	N/A NorthFace	N/A NorthFace	Negligible	Low	Not Significant
6	38.5	35	8	27	25	5	31.5	21	5	17%	-16%	0%	Negligible	N/A NorthFace	N/A NorthFace	Negligible	Low	Not Significant
7	38.5	35	8	27	25	5	31	22	6	15%	-12%	20%	Negligible	N/A NorthFace	N/A NorthFace	Negligible	Low	Not Significant
8	38.5	35	8	27	25	5	30	22	6	11%	-12%	20%	Negligible	N/A NorthFace	N/A NorthFace	Negligible	Low	Not Significant
9	38	34	7	27	25	5	31	20	4	15%	-20%	-20%	Negligible	N/A NorthFace	N/A NorthFace	Negligible	Low	Not Significant
10	38	34	7	27	25	5	30.5	21	5	13%	-16%	0%	Negligible	N/A NorthFace	N/A NorthFace	Negligible	Low	Not Significant
11	38	34	7	27	25	5	29.5	21	5	9%	-16%	0%	Negligible	N/A NorthFace	N/A NorthFace	Negligible	Low	Not Significant
12	37.5	33	6	27	25	4.8	30.5	19	3	13%	-24%	-38%	Negligible	N/A NorthFace	N/A NorthFace	Negligible	Low	Not Significant
13	37.5	33	6	27	25	4.8	30	20	4	11%	-20%	-17%	Negligible	N/A NorthFace	N/A NorthFace	Negligible	Low	Not Significant
14	36	32	6	27	25	4.8	28.5	19	4	6%	-24%	-17%	Negligible	N/A NorthFace	N/A NorthFace	Negligible	Low	Not Significant
15	40	37	10	27	25	5	30	22	7	11%	-12%	40%	Negligible	N/A NorthFace	N/A NorthFace	Negligible	Low	Not Significant
16	39	37	10	27	25	5	28.5	22	7	6%	-12%	40%	Negligible	N/A NorthFace	N/A NorthFace	Negligible	Low	Not Significant
17	38	35	8	27	25	5	29	22	7	7%	-12%	40%	Negligible	N/A NorthFace	N/A NorthFace	Negligible	Low	Not Significant
18	36	34	7	27	25	5	27	19	5	0%	-24%	0%	Negligible	N/A NorthFace	N/A NorthFace	Negligible	Low	Not Significant
19	35	31	5	27	24.8	4	27	18	5	0%	-27%	25%	Negligible	N/A NorthFace	N/A NorthFace	Negligible	Low	Not Significant

Window Number	Existing Conditions			BRE recommended minimum target			Proposed Condition			% Deviation from Minimum Target			Predicted Impacts			Significance of Effects		
	VSC	APSH	APSH Winter (WPSH)	VSC BRE Minimum Target	APSH BRE Minimum Target	APSH Winter BRE Minimum Target	VSC	APSH	APSH Winter	VSC	APSH	APSH Winter (WPSH)	VSC Expected Impact	APSH Expected Impact	APSH Winter Expected Impact	Greatest Impact	Sensitivity	Greatest Significance
20	40	37	10	27	25	5	29	21	8	7%	-16%	60%	Negligible	N/A NorthFace	N/A NorthFace	Negligible	Low	Not Significant
21	39.5	26	5	27	20.8	4	31	9	2	15%	-57%	-50%	Negligible	N/A NorthFace	N/A NorthFace	Negligible	Low	Not Significant
22	40	37	10	27	25	5	28.5	20	7	6%	-20%	40%	Negligible	N/A NorthFace	N/A NorthFace	Negligible	Low	Not Significant
23	39	47	13	27	25	5	23.5	30	10	-13%	20%	100%	Medium	Negligible	Negligible	Medium	Low	Moderate/Slight
24	38	24	3	27	19.2	2.4	30.5	8	2	13%	-58%	-17%	Negligible	N/A NorthFace	N/A NorthFace	Negligible	Low	Not Significant
25	38	35	8	27	25	5	28	19	7	4%	-24%	40%	Negligible	N/A NorthFace	N/A NorthFace	Negligible	Low	Not Significant
26	36.5	40	8	27	25	5	22.5	25	7	-17%	0%	40%	Medium	Negligible	Negligible	Medium	Low	Moderate/Slight
27	11	8	1	8.8	6.4	0.8	8	4	1	-9%	-38%	25%	Low	N/A NorthFace	N/A NorthFace	Low	Low	Minor
28	40	37	10	27	25	5	26.5	20	7	-2%	-20%	40%	Low	N/A NorthFace	N/A NorthFace	Low	Low	Minor
29	40	32	7	27	25	5	26	15	4	-4%	-40%	-20%	Low	N/A NorthFace	N/A NorthFace	Low	Low	Minor
30	37	30	5	27	24	4	25.5	15	4	-6%	-38%	0%	Low	N/A NorthFace	N/A NorthFace	Low	Low	Minor
31	35	28	4	27	22.4	3.2	25	15	4	-7%	-33%	25%	Low	N/A NorthFace	N/A NorthFace	Low	Low	Minor
32	33	23	2	26.4	18.4	1.6	24.5	13	2	-7%	-29%	25%	Low	N/A NorthFace	N/A NorthFace	Low	Low	Minor
33	40	37	10	27	25	5	24.5	20	7	-9%	-20%	40%	Low	N/A NorthFace	N/A NorthFace	Low	Low	Minor
34	40	37	10	27	25	5	23.5	19	7	-13%	-24%	40%	Medium	N/A NorthFace	N/A NorthFace	Medium	Low	Moderate/Slight
35	40	37	10	27	25	5	23.5	19	7	-13%	-24%	40%	Medium	N/A NorthFace	N/A NorthFace	Medium	Low	Moderate/Slight
36	40	37	10	27	25	5	23.5	19	7	-13%	-24%	40%	Medium	N/A NorthFace	N/A NorthFace	Medium	Low	Moderate/Slight
37	39.5	37	10	27	25	5	23	19	7	-15%	-24%	40%	Medium	N/A NorthFace	N/A NorthFace	Medium	Low	Moderate/Slight
38	37	33	7	27	25	5	23	19	7	-15%	-24%	40%	Medium	N/A NorthFace	N/A NorthFace	Medium	Low	Moderate/Slight
39	36.5	34	8	27	25	5	23	19	7	-15%	-24%	40%	Medium	N/A NorthFace	N/A NorthFace	Medium	Low	Moderate/Slight
40	35.5	32	7	27	25	5	22.5	19	7	-17%	-24%	40%	Medium	N/A NorthFace	N/A NorthFace	Medium	Low	Moderate/Slight
41	33.5	29	6	26.8	23.2	4.8	23	19	6	-14%	-18%	25%	Medium	N/A NorthFace	N/A NorthFace	Medium	Low	Moderate/Slight
42	32.5	28	6	26	22.4	4.8	22.5	18	6	-13%	-20%	25%	Medium	N/A NorthFace	N/A NorthFace	Medium	Low	Moderate/Slight
43	31.5	27	6	25.2	21.6	4.8	22.5	18	6	-11%	-17%	25%	Medium	N/A NorthFace	N/A NorthFace	Medium	Low	Moderate/Slight
44	31.5	24	5	25.2	19.2	4	22.5	17	5	-11%	-11%	25%	Medium	N/A NorthFace	N/A NorthFace	Medium	Low	Moderate/Slight
45	30.5	21	4	24.4	16.8	3.2	22	17	4	-10%	1%	25%	Low	N/A	N/A	Low	Low	Minor

Window Number	Existing Conditions			BRE recommended minimum target			Proposed Condition			% Deviation from Minimum Target			Predicted Impacts			Significance of Effects		
	VSC	APSH	APSH Winter (WPSH)	VSC BRE Minimum Target	APSH BRE Minimum Target	APSH Winter BRE Minimum Target	VSC	APSH	APSH Winter	VSC	APSH	APSH Winter (WPSH)	VSC Expected Impact	APSH Expected Impact	APSH Winter Expected Impact	Greatest Impact	Sensitivity	Greatest Significance
														NorthFace	NorthFace			
46	28.5	19	4	22.8	15.2	3.2	22	16	4	-4%	5%	25%	Low	N/A NorthFace	N/A NorthFace	Low	Low	Minor
B17 1, Michael Street																		
47	23.5	29	6	18.8	23.2	4.8	11	20	5	-41%	-14%	4%	High	N/A NorthFace	N/A NorthFace	High	Low	Moderate/Slight
48	24	8	0	19.2	6.4	0	13	3	0	-32%	-53%	0%	High	N/A NorthFace	N/A NorthFace	High	Low	Moderate/Slight
49	19.5	21	3	15.6	16.8	2.4	9.5	15	3	-39%	-11%	25%	High	N/A NorthFace	N/A NorthFace	High	Low	Moderate/Slight
50	22.5	9	0	18	7.2	0	13	4	0	-28%	-44%	0%	High	N/A NorthFace	N/A NorthFace	High	Low	Moderate/Slight
51	37	63	16	27	25	5	20	53	15	-26%	112%	200%	High	N/A NorthFace	N/A NorthFace	High	Low	Moderate/Slight
52	37.5	63	16	27	25	5	22	54	15	-19%	116%	200%	Medium	N/A NorthFace	N/A NorthFace	Medium	Low	Moderate/Slight
53	30.5	30	7	24.4	24	5	18	24	6	-26%	0%	20%	High	N/A NorthFace	N/A NorthFace	High	Low	Moderate/Slight
54	27	25	6	21.6	20	4.8	17	22	6	-21%	10%	25%	High	N/A NorthFace	N/A NorthFace	High	Low	Moderate/Slight
55	26	26	6	20.8	20.8	4.8	17	24	6	-18%	15%	25%	Medium	N/A NorthFace	N/A NorthFace	Medium	Low	Moderate/Slight
56	22.5	20	4	18	16	3.2	15.5	20	4	-14%	25%	25%	Medium	N/A NorthFace	N/A NorthFace	Medium	Low	Moderate/Slight
B18 2, Michael Street																		
57	36.5	63	16	27	25	5	20.5	55	15	-24%	120%	200%	High	N/A NorthFace	N/A NorthFace	High	Low	Moderate/Slight
58	36.5	63	16	27	25	5	22	54	14	-19%	116%	180%	Medium	N/A NorthFace	N/A NorthFace	Medium	Low	Moderate/Slight
59	28	27	7	22.4	21.6	5	16.5	23	6	-26%	6%	20%	High	N/A NorthFace	N/A NorthFace	High	Low	Moderate/Slight
60	28	26	6	22.4	20.8	4.8	17	22	5	-24%	6%	4%	High	N/A NorthFace	N/A NorthFace	High	Low	Moderate/Slight
61	27	26	6	21.6	20.8	4.8	17	25	6	-21%	20%	25%	High	N/A NorthFace	N/A NorthFace	High	Low	Moderate/Slight
62	27	26	6	21.6	20.8	4.8	17	25	6	-21%	20%	25%	High	N/A NorthFace	N/A NorthFace	High	Low	Moderate/Slight
63	21	20	4	16.8	16	3.2	13.5	20	4	-20%	25%	25%	Medium	N/A NorthFace	N/A NorthFace	Medium	Low	Moderate/Slight
B19 3, Michael Street																		
64	36.5	63	16	27	25	5	21.5	55	14	-20%	120%	180%	High	N/A NorthFace	N/A NorthFace	High	Low	Moderate/Slight
65	36.5	63	16	27	25	5	21	56	14	-22%	124%	180%	High	N/A NorthFace	N/A NorthFace	High	Low	Moderate/Slight
66	30	30	7	24	24	5	18.5	27	6	-23%	13%	20%	High	N/A NorthFace	N/A NorthFace	High	Low	Moderate/Slight
67	26	25	6	20.8	20	4.8	16	25	6	-23%	25%	25%	High	N/A NorthFace	N/A NorthFace	High	Low	Moderate/Slight

Window Number	Existing Conditions			BRE recommended minimum target			Proposed Condition			% Deviation from Minimum Target			Predicted Impacts			Significance of Effects		
	VSC	APSH	APSH Winter (WPSH)	VSC BRE Minimum Target	APSH BRE Minimum Target	APSH Winter BRE Minimum Target	VSC	APSH	APSH Winter	VSC	APSH	APSH Winter (WPSH)	VSC Expected Impact	APSH Expected Impact	APSH Winter Expected Impact	Greatest Impact	Sensitivity	Greatest Significance
68	25.5	26	6	20.4	20.8	4.8	15	25	5	-26%	20%	4%	High	N/A NorthFace	N/A NorthFace	High	Low	Moderate/Slight
69	21.5	20	4	17.2	16	3.2	14.5	20	4	-16%	25%	25%	Medium	N/A NorthFace	N/A NorthFace	Medium	Low	Moderate/Slight
B20 4, Michael Street																		
70	36.5	63	16	27	25	5	21.5	58	14	-20%	132%	180%	High	N/A NorthFace	N/A NorthFace	High	Low	Moderate/Slight
71	36.5	63	16	27	25	5	22.5	59	14	-17%	136%	180%	Medium	N/A NorthFace	N/A NorthFace	Medium	Low	Moderate/Slight
72	28	27	7	22.4	21.6	5	17.5	24	6	-22%	11%	20%	High	N/A NorthFace	N/A NorthFace	High	Low	Moderate/Slight
73	28	26	6	22.4	20.8	4.8	19	24	5	-15%	15%	4%	Medium	N/A NorthFace	N/A NorthFace	Medium	Low	Moderate/Slight
74	26.5	26	6	21.2	20.8	4.8	16.5	25	5	-22%	20%	4%	High	N/A NorthFace	N/A NorthFace	High	Low	Moderate/Slight
75	26	26	6	20.8	20.8	4.8	17.5	25	5	-16%	20%	4%	Medium	N/A NorthFace	N/A NorthFace	Medium	Low	Moderate/Slight
76	21	20	4	16.8	16	3.2	15	20	4	-11%	25%	25%	Medium	N/A NorthFace	N/A NorthFace	Medium	Low	Moderate/Slight
B21 5, Michael Street																		
77	36.5	63	16	27	25	5	24.5	59	14	-9%	136%	180%	Low	N/A NorthFace	N/A NorthFace	Low	Low	Minor
78	37	63	16	27	25	5	25	60	14	-7%	140%	180%	Low	N/A NorthFace	N/A NorthFace	Low	Low	Minor
79	30	30	7	24	24	5	22	27	5	-8%	13%	0%	Low	N/A NorthFace	N/A NorthFace	Low	Low	Minor
80	25	25	6	20	20	4.8	18	24	5	-10%	20%	4%	Low	N/A NorthFace	N/A NorthFace	Low	Low	Minor
81	25	26	6	20	20.8	4.8	19	25	5	-5%	20%	4%	Low	N/A NorthFace	N/A NorthFace	Low	Low	Minor
82	21	20	4	16.8	16	3.2	16	20	4	-5%	25%	25%	Low	N/A NorthFace	N/A NorthFace	Low	Low	Minor
B22 6, Michael Street																		
83	37	63	16	27	25	5	25.5	60	14	-6%	140%	180%	Low	N/A NorthFace	N/A NorthFace	Low	Low	Minor
84	37	62	16	27	25	5	25.5	58	13	-6%	132%	160%	Low	N/A NorthFace	N/A NorthFace	Low	Low	Minor
85	28	27	7	22.4	21.6	5	19.5	24	5	-13%	11%	0%	Medium	N/A NorthFace	N/A NorthFace	Medium	Low	Moderate/Slight
86	28	27	7	22.4	21.6	5	20.5	24	5	-8%	11%	0%	Low	N/A NorthFace	N/A NorthFace	Low	Low	Minor
87	26	27	7	20.8	21.6	5	19.5	25	5	-6%	16%	0%	Low	N/A NorthFace	N/A NorthFace	Low	Low	Minor
88	26	27	7	20.8	21.6	5	19.5	24	4	-6%	11%	-20%	Low	N/A NorthFace	N/A NorthFace	Low	Low	Minor
89	21	20	4	16.8	16	3.2	16	20	4	-5%	25%	25%	Low	N/A NorthFace	N/A NorthFace	Low	Low	Minor
B23 Westgate House, Michael Street																		

Window Number	Existing Conditions			BRE recommended minimum target			Proposed Condition			% Deviation from Minimum Target			Predicted Impacts			Significance of Effects		
	VSC	APSH	APSH Winter (WPSH)	VSC BRE Minimum Target	APSH BRE Minimum Target	APSH Winter BRE Minimum Target	VSC	APSH	APSH Winter	VSC	APSH	APSH Winter (WPSH)	VSC Expected Impact	APSH Expected Impact	APSH Winter Expected Impact	Greatest Impact	Sensitivity	Greatest Significance
90	40	71	3	27	25	2.4	36	65	3	33%	160%	25%	Negligible	N/A NorthFace	N/A NorthFace	Negligible	High	Not Significant
91	40	74	6	27	25	4.8	35	66	6	30%	164%	25%	Negligible	N/A NorthFace	N/A NorthFace	Negligible	High	Not Significant
92	38.5	9	0	27	7.2	0	34.5	8	0	28%	11%	0%	Negligible	N/A NorthFace	N/A NorthFace	Negligible	High	Not Significant
93	38.5	9	0	27	7.2	0	34.5	8	0	28%	11%	0%	Negligible	N/A NorthFace	N/A NorthFace	Negligible	High	Not Significant
94	37.5	8	0	27	6.4	0	34	7	0	26%	9%	0%	Negligible	N/A NorthFace	N/A NorthFace	Negligible	High	Not Significant
95	37.5	8	0	27	6.4	0	33.5	7	0	24%	9%	0%	Negligible	N/A NorthFace	N/A NorthFace	Negligible	High	Not Significant
96	36	90	25	27	25	5	32	76	22	19%	204%	340%	Negligible	Negligible	Negligible	Negligible	Low	Not Significant
97	39	76	19	27	25	5	24	63	16	-11%	152%	220%	Medium	N/A NorthFace	N/A NorthFace	Medium	High	Very Significant/Significant
98	40	75	18	27	25	5	24.5	62	15	-9%	148%	200%	Low	N/A NorthFace	N/A NorthFace	Low	High	Significant/Moderate
99	39.5	38	10	27	25	5	17.5	22	7	-35%	-12%	40%	High	N/A NorthFace	N/A NorthFace	High	High	Profound
100	38.5	38	10	27	25	5	18	20	6	-33%	-20%	20%	High	N/A NorthFace	N/A NorthFace	High	High	Profound
101	38.5	38	10	27	25	5	15	17	6	-44%	-32%	20%	High	N/A NorthFace	N/A NorthFace	High	High	Profound
102	38.5	38	10	27	25	5	14.5	18	7	-46%	-28%	40%	High	N/A NorthFace	N/A NorthFace	High	High	Profound
103	36.5	38	10	27	25	5	11	17	6	-59%	-32%	20%	High	N/A NorthFace	N/A NorthFace	High	Low	Moderate/Slight
104	39.5	38	10	27	25	5	17.5	22	7	-35%	-12%	40%	High	N/A NorthFace	N/A NorthFace	High	High	Profound
105	40	38	10	27	25	5	18	22	7	-33%	-12%	40%	High	N/A NorthFace	N/A NorthFace	High	High	Profound
106	38	38	10	27	25	5	15	20	7	-44%	-20%	40%	High	N/A NorthFace	N/A NorthFace	High	High	Profound
107	37.5	38	10	27	25	5	15	22	7	-44%	-12%	40%	High	N/A NorthFace	N/A NorthFace	High	High	Profound
108	40	78	21	27	25	5	25.5	68	19	-6%	172%	280%	Low	N/A NorthFace	N/A NorthFace	Low	High	Significant/Moderate
109	39	75	18	27	25	5	24.5	65	16	-9%	160%	220%	Low	N/A NorthFace	N/A NorthFace	Low	High	Significant/Moderate
110	36.5	70	5	27	25	4	30.5	64	5	13%	156%	25%	Negligible	N/A NorthFace	N/A NorthFace	Negligible	Low	Not Significant
111	39.5	38	10	27	25	5	19	23	7	-30%	-8%	40%	High	N/A NorthFace	N/A NorthFace	High	High	Profound
112	39.5	38	10	27	25	5	19	24	7	-30%	-4%	40%	High	N/A NorthFace	N/A NorthFace	High	High	Profound
113	38	38	10	27	25	5	15.5	22	7	-43%	-12%	40%	High	N/A NorthFace	N/A NorthFace	High	High	Profound
114	38.5	38	10	27	25	5	17	23	7	-37%	-8%	40%	High	N/A NorthFace	N/A NorthFace	High	High	Profound

Window Number	Existing Conditions			BRE recommended minimum target			Proposed Condition			% Deviation from Minimum Target			Predicted Impacts			Significance of Effects		
	VSC	APSH	APSH Winter (WPSH)	VSC BRE Minimum Target	APSH BRE Minimum Target	APSH Winter BRE Minimum Target	VSC	APSH	APSH Winter	VSC	APSH	APSH Winter (WPSH)	VSC Expected Impact	APSH Expected Impact	APSH Winter Expected Impact	Greatest Impact	Sensitivity	Greatest Significance
115	37	38	10	27	25	5	13	22	7	-52%	-12%	40%	High	N/A NorthFace	N/A NorthFace	High	Low	Moderate/Slight
116	40	95	30	27	25	5	38.5	87	28	43%	248%	460%	Negligible	Negligible	Negligible	Negligible	High	Not Significant
117	40	96	30	27	25	5	39	89	28	44%	256%	460%	Negligible	Negligible	Negligible	Negligible	High	Not Significant
B24 St Michaels Court, Michael Street																		
118	32	7	0	25.6	5.6	0	26.5	6	0	4%	7%	0%	Negligible	N/A NorthFace	N/A NorthFace	Negligible	High	Not Significant
119	33.5	7	0	26.8	5.6	0	26.5	6	0	-1%	7%	0%	Low	N/A NorthFace	N/A NorthFace	Low	High	Significant/Moderate
120	34.5	7	0	27	5.6	0	27.5	6	0	2%	7%	0%	Negligible	N/A NorthFace	N/A NorthFace	Negligible	High	Not Significant
121	34.5	7	0	27	5.6	0	25.5	6	0	-6%	7%	0%	Low	N/A NorthFace	N/A NorthFace	Low	High	Significant/Moderate
122	30	7	0	24	5.6	0	24	6	0	0%	7%	0%	Negligible	N/A NorthFace	N/A NorthFace	Negligible	High	Not Significant
123	31	7	0	24.8	5.6	0	23	6	0	-7%	7%	0%	Low	N/A NorthFace	N/A NorthFace	Low	High	Significant/Moderate
124	25.5	7	0	20.4	5.6	0	20	6	0	-2%	7%	0%	Low	N/A NorthFace	N/A NorthFace	Low	High	Significant/Moderate
125	28	7	0	22.4	5.6	0	20	6	0	-11%	7%	0%	Medium	N/A NorthFace	N/A NorthFace	Medium	Low	Moderate/Slight
126	30	7	0	24	5.6	0	21.5	6	0	-10%	7%	0%	Medium	N/A NorthFace	N/A NorthFace	Medium	High	Very Significant/Significant
127	29.5	7	0	23.6	5.6	0	21	6	0	-11%	7%	0%	Medium	N/A NorthFace	N/A NorthFace	Medium	Low	Moderate/Slight
128	37	37	9	27	25	5	15	23	7	-44%	-8%	40%	High	N/A NorthFace	N/A NorthFace	High	Negligible	Not Significant
B25 Barrow House, Michael Street																		
129	40	9	0	27	7.2	0	34.5	8	0	28%	11%	0%	Negligible	N/A NorthFace	N/A NorthFace	Negligible	Low	Not Significant
130	40	9	0	27	7.2	0	32	8	0	19%	11%	0%	Negligible	N/A NorthFace	N/A NorthFace	Negligible	Low	Not Significant
131	40	9	0	27	7.2	0	30.5	8	0	13%	11%	0%	Negligible	N/A NorthFace	N/A NorthFace	Negligible	Low	Not Significant
132	30	1	0	24	0.8	0	24	0	0	0%	-100%	0%	Negligible	N/A NorthFace	N/A NorthFace	Negligible	Low	Not Significant
133	40	9	0	27	7.2	0	32	8	0	19%	11%	0%	Negligible	N/A NorthFace	N/A NorthFace	Negligible	Low	Not Significant
134	39.5	9	0	27	7.2	0	31	8	0	15%	11%	0%	Negligible	N/A NorthFace	N/A NorthFace	Negligible	Low	Not Significant
135	18.5	11	0	14.8	8.8	0	18.5	11	0	25%	25%	0%	Negligible	Negligible	Negligible	Negligible	Low	Not Significant
136	39.5	9	0	27	7.2	0	28.5	8	0	6%	11%	0%	Negligible	N/A NorthFace	N/A NorthFace	Negligible	Low	Not Significant
137	26.5	6	0	21.2	4.8	0	19	5	0	-10%	4%	0%	Medium	N/A NorthFace	N/A NorthFace	Medium	Low	Moderate/Slight
138	19	6	0	15.2	4.8	0	11	5	0	-28%	4%	0%	High	N/A NorthFace	N/A NorthFace	High	Low	Moderate/Slight
139	40	25	5	27	20	4	23.5	19	5	-13%	-5%	25%	Medium	N/A	N/A	Medium	Low	Moderate/Slight

Window Number	Existing Conditions			BRE recommended minimum target			Proposed Condition			% Deviation from Minimum Target			Predicted Impacts			Significance of Effects		
	VSC	APSH	APSH Winter (WPSH)	VSC BRE Minimum Target	APSH BRE Minimum Target	APSH Winter BRE Minimum Target	VSC	APSH	APSH Winter	VSC	APSH	APSH Winter (WPSH)	VSC Expected Impact	APSH Expected Impact	APSH Winter Expected Impact	Greatest Impact	Sensitivity	Greatest Significance
														NorthFace	NorthFace			
140	40	25	5	27	20	4	25	20	5	-7%	0%	25%	Low	N/A NorthFace	N/A NorthFace	Low	Low	Minor
141	33.5	17	3	26.8	13.6	2.4	22.5	16	3	-16%	18%	25%	Medium	N/A NorthFace	N/A NorthFace	Medium	Low	Moderate/Slight
142	39.5	24	4	27	19.2	3.2	20.5	18	4	-24%	-6%	25%	High	N/A NorthFace	N/A NorthFace	High	Low	Moderate/Slight
143	39.5	24	4	27	19.2	3.2	22	19	4	-19%	-1%	25%	Medium	N/A NorthFace	N/A NorthFace	Medium	Low	Moderate/Slight
144	39.5	25	5	27	20	4	24	23	5	-11%	15%	25%	Medium	N/A NorthFace	N/A NorthFace	Medium	Low	Moderate/Slight
145	39.5	24	5	27	19.2	4	26.5	24	5	-2%	25%	25%	Low	N/A NorthFace	N/A NorthFace	Low	Low	Minor
146	35	22	3	27	17.6	2.4	16.5	18	3	-39%	2%	25%	High	N/A NorthFace	N/A NorthFace	High	Low	Moderate/Slight
147	34.5	25	4	27	20	3.2	19	23	4	-30%	15%	25%	High	N/A NorthFace	N/A NorthFace	High	Low	Moderate/Slight
148	29.5	22	6	23.6	17.6	4.8	21	22	6	-11%	25%	25%	Medium	N/A NorthFace	N/A NorthFace	Medium	Low	Moderate/Slight
B3 Pillar House, Ellen Street																		
149	38	22	3	27	17.6	2.4	27.5	22	3	2%	25%	25%	Negligible	N/A NorthFace	N/A NorthFace	Negligible	High	Not Significant
150	38.5	22	3	27	17.6	2.4	23	22	3	-15%	25%	25%	Medium	N/A NorthFace	N/A NorthFace	Medium	High	Very Significant/Significant
151	38	22	3	27	17.6	2.4	18	21	3	-33%	19%	25%	High	N/A NorthFace	N/A NorthFace	High	High	Profound
152	35.5	19	2	27	15.2	1.6	24	19	2	-11%	25%	25%	Medium	N/A NorthFace	N/A NorthFace	Medium	Low	Moderate/Slight
153	35.5	21	3	27	16.8	2.4	19	21	3	-30%	25%	25%	High	N/A NorthFace	N/A NorthFace	High	Low	Moderate/Slight
154	35.5	20	2	27	16	1.6	14	19	2	-48%	19%	25%	High	N/A NorthFace	N/A NorthFace	High	Low	Moderate/Slight
155	33	11	2	26.4	8.8	1.6	21	11	2	-20%	25%	25%	High	N/A NorthFace	N/A NorthFace	High	Low	Moderate/Slight
156	33.5	13	2	26.8	10.4	1.6	17	13	2	-37%	25%	25%	High	N/A NorthFace	N/A NorthFace	High	Low	Moderate/Slight
157	33.5	14	0	26.8	11.2	0	13.5	14	0	-50%	25%	0%	High	N/A NorthFace	N/A NorthFace	High	Low	Moderate/Slight
B16 Pillar House, Little Ellen Street																		
158	36.5	8	0	27	6.4	0	25	7	0	-7%	9%	0%	Low	N/A NorthFace	N/A NorthFace	Low	High	Significant/Moderate
159	35.5	9	0	27	7.2	0	23	8	0	-15%	11%	0%	Medium	N/A NorthFace	N/A NorthFace	Medium	Low	Moderate/Slight
160	28.5	3	0	22.8	2.4	0	18	3	0	-21%	25%	0%	High	N/A NorthFace	N/A NorthFace	High	Low	Moderate/Slight
161	4	1	0	3.2	0.8	0	3	1	0	-6%	25%	0%	Low	N/A NorthFace	N/A NorthFace	Low	High	Significant/Moderate
162	4	2	0	3.2	1.6	0	3.5	2	0	9%	25%	0%	Negligible	N/A NorthFace	N/A NorthFace	Negligible	High	Not Significant

Window Number	Existing Conditions			BRE recommended minimum target			Proposed Condition			% Deviation from Minimum Target			Predicted Impacts			Significance of Effects		
	VSC	APSH	APSH Winter (WPSH)	VSC BRE Minimum Target	APSH BRE Minimum Target	APSH Winter BRE Minimum Target	VSC	APSH	APSH Winter	VSC	APSH	APSH Winter (WPSH)	VSC Expected Impact	APSH Expected Impact	APSH Winter Expected Impact	Greatest Impact	Sensitivity	Greatest Significance
163	33.5	13	0	26.8	10.4	0	28.5	13	0	6%	25%	0%	Negligible	N/A NorthFace	N/A NorthFace	Negligible	Low	Not Significant
164	32.5	10	0	26	8	0	29	10	0	12%	25%	0%	Negligible	N/A NorthFace	N/A NorthFace	Negligible	Low	Not Significant
165	21.5	4	0	17.2	3.2	0	19	4	0	10%	25%	0%	Negligible	N/A NorthFace	N/A NorthFace	Negligible	Low	Not Significant
166	3.5	0	0	2.8	0	0	3	0	0	7%	0%	0%	Negligible	N/A NorthFace	N/A NorthFace	Negligible	High	Not Significant
167	5	0	0	4	0	0	4	0	0	0%	0%	0%	Negligible	N/A NorthFace	N/A NorthFace	Negligible	High	Not Significant
168	32	8	0	25.6	6.4	0	29	8	0	13%	25%	0%	Negligible	N/A NorthFace	N/A NorthFace	Negligible	Low	Not Significant
169	32	8	0	25.6	6.4	0	30.5	8	0	19%	25%	0%	Negligible	N/A NorthFace	N/A NorthFace	Negligible	Low	Not Significant
170	22.5	4	0	18	3.2	0	21.5	4	0	19%	25%	0%	Negligible	N/A NorthFace	N/A NorthFace	Negligible	Low	Not Significant
171	4	0	0	3.2	0	0	3	0	0	-6%	0%	0%	Low	N/A NorthFace	N/A NorthFace	Low	High	Significant/Moderate
172	3.5	0	0	2.8	0	0	3	0	0	7%	0%	0%	Negligible	N/A NorthFace	N/A NorthFace	Negligible	High	Not Significant
173	30	8	0	24	6.4	0	29	8	0	21%	25%	0%	Negligible	N/A NorthFace	N/A NorthFace	Negligible	Low	Not Significant
174	27	8	0	21.6	6.4	0	26	8	0	20%	25%	0%	Negligible	N/A NorthFace	N/A NorthFace	Negligible	Low	Not Significant
175	20.5	4	0	16.4	3.2	0	20	4	0	22%	25%	0%	Negligible	N/A NorthFace	N/A NorthFace	Negligible	Low	Not Significant
176	0.5	0	0	0.4	0	0	0.5	0	0	25%	0%	0%	Negligible	N/A NorthFace	N/A NorthFace	Negligible	High	Not Significant
177	23	8	0	18.4	6.4	0	22	8	0	20%	25%	0%	Negligible	N/A NorthFace	N/A NorthFace	Negligible	Low	Not Significant
178	19	8	0	15.2	6.4	0	18	8	0	18%	25%	0%	Negligible	N/A NorthFace	N/A NorthFace	Negligible	Low	Not Significant
179	12.5	2	0	10	1.6	0	12	2	0	20%	25%	0%	Negligible	N/A NorthFace	N/A NorthFace	Negligible	Low	Not Significant
180	0.5	0	0	0.4	0	0	0.5	0	0	25%	0%	0%	Negligible	N/A NorthFace	N/A NorthFace	Negligible	High	Not Significant
181	16.5	3	0	13.2	2.4	0	15.5	3	0	17%	25%	0%	Negligible	N/A NorthFace	N/A NorthFace	Negligible	Low	Not Significant
182	12.5	0	0	10	0	0	12	0	0	20%	0%	0%	Negligible	N/A NorthFace	N/A NorthFace	Negligible	Low	Not Significant
B4 11, Ellen Street																		
183	26.5	16	2	21.2	12.8	1.6	21	9	2	-1%	-30%	25%	Low	N/A NorthFace	N/A NorthFace	Low	Low	Minor
184	26.5	16	2	21.2	12.8	1.6	21	9	2	-1%	-30%	25%	Low	N/A NorthFace	N/A NorthFace	Low	Low	Minor
185	21.5	15	1	17.2	12	0.8	17	8	1	-1%	-33%	25%	Low	N/A NorthFace	N/A NorthFace	Low	Low	Minor
B5 12, Ellen Street																		
186	37.5	21	2	27	16.8	1.6	30	14	1	11%	-17%	-38%	Negligible	N/A	N/A	Negligible	Low	Not Significant

Window Number	Existing Conditions			BRE recommended minimum target			Proposed Condition			% Deviation from Minimum Target			Predicted Impacts			Significance of Effects		
	VSC	APSH	APSH Winter (WPSH)	VSC BRE Minimum Target	APSH BRE Minimum Target	APSH Winter BRE Minimum Target	VSC	APSH	APSH Winter	VSC	APSH	APSH Winter (WPSH)	VSC Expected Impact	APSH Expected Impact	APSH Winter Expected Impact	Greatest Impact	Sensitivity	Greatest Significance
														NorthFace	NorthFace			
187	36.5	21	2	27	16.8	1.6	30	13	1	11%	-23%	-38%	Negligible	N/A NorthFace	N/A NorthFace	Negligible	Low	Not Significant
188	33.5	20	2	26.8	16	1.6	28	10	1	4%	-38%	-38%	Negligible	N/A NorthFace	N/A NorthFace	Negligible	Low	Not Significant
189	32.5	20	2	26	16	1.6	27.5	10	1	6%	-38%	-38%	Negligible	N/A NorthFace	N/A NorthFace	Negligible	Low	Not Significant
190	27	18	2	21.6	14.4	1.6	23	8	0	6%	-44%	-100%	Negligible	N/A NorthFace	N/A NorthFace	Negligible	Low	Not Significant
191	27	18	2	21.6	14.4	1.6	23	8	0	6%	-44%	-100%	Negligible	N/A NorthFace	N/A NorthFace	Negligible	Low	Not Significant
192	19	14	1	15.2	11.2	0.8	17	7	0	12%	-38%	-100%	Negligible	N/A NorthFace	N/A NorthFace	Negligible	Low	Not Significant
B6 13, Ellen Street																		
193	25	19	2	20	15.2	1.6	22.5	8	0	13%	-47%	-100%	Negligible	N/A NorthFace	N/A NorthFace	Negligible	High	Not Significant
194	36.5	21	2	27	16.8	1.6	31	13	1	15%	-23%	-38%	Negligible	N/A NorthFace	N/A NorthFace	Negligible	High	Not Significant
195	35.5	21	2	27	16.8	1.6	31	14	1	15%	-17%	-38%	Negligible	N/A NorthFace	N/A NorthFace	Negligible	High	Not Significant
196	32	20	2	25.6	16	1.6	27.5	11	1	7%	-31%	-38%	Negligible	N/A NorthFace	N/A NorthFace	Negligible	High	Not Significant
197	30.5	20	2	24.4	16	1.6	26.5	12	1	9%	-25%	-38%	Negligible	N/A NorthFace	N/A NorthFace	Negligible	High	Not Significant
198	24.5	19	2	19.6	15.2	1.6	21.5	8	0	10%	-47%	-100%	Negligible	N/A NorthFace	N/A NorthFace	Negligible	High	Not Significant
199	17	16	2	13.6	12.8	1.6	15.5	7	0	14%	-45%	-100%	Negligible	N/A NorthFace	N/A NorthFace	Negligible	Low	Not Significant
B7 14, Ellen Street																		
200	34.5	20	2	27	16	1.6	31	15	1	15%	-6%	-38%	Negligible	N/A NorthFace	N/A NorthFace	Negligible	High	Not Significant
201	34	20	2	27	16	1.6	31	15	1	15%	-6%	-38%	Negligible	N/A NorthFace	N/A NorthFace	Negligible	High	Not Significant
202	29	20	2	23.2	16	1.6	27	12	1	16%	-25%	-38%	Negligible	N/A NorthFace	N/A NorthFace	Negligible	High	Not Significant
203	28	20	2	22.4	16	1.6	26.5	13	1	18%	-19%	-38%	Negligible	N/A NorthFace	N/A NorthFace	Negligible	High	Not Significant
204	24	18	2	19.2	14.4	1.6	21	10	0	9%	-31%	-100%	Negligible	N/A NorthFace	N/A NorthFace	Negligible	High	Not Significant
205	22.5	19	2	18	15.2	1.6	20.5	11	0	14%	-28%	-100%	Negligible	N/A NorthFace	N/A NorthFace	Negligible	High	Not Significant
206	15.5	15	2	12.4	12	1.6	14	8	0	13%	-33%	-100%	Negligible	N/A NorthFace	N/A NorthFace	Negligible	Low	Not Significant
B8 15, Ellen Street																		
207	33	20	2	26.4	16	1.6	31	16	1	17%	0%	-38%	Negligible	N/A NorthFace	N/A NorthFace	Negligible	High	Not Significant
208	33	19	2	26.4	15.2	1.6	30.5	16	1	16%	5%	-38%	Negligible	N/A NorthFace	N/A NorthFace	Negligible	High	Not Significant

Window Number	Existing Conditions			BRE recommended minimum target			Proposed Condition			% Deviation from Minimum Target			Predicted Impacts			Significance of Effects		
	VSC	APSH	APSH Winter (WPSH)	VSC BRE Minimum Target	APSH BRE Minimum Target	APSH Winter BRE Minimum Target	VSC	APSH	APSH Winter	VSC	APSH	APSH Winter (WPSH)	VSC Expected Impact	APSH Expected Impact	APSH Winter Expected Impact	Greatest Impact	Sensitivity	Greatest Significance
209	27.5	16	2	22	12.8	1.6	26	13	1	18%	2%	-38%	Negligible	N/A NorthFace	N/A NorthFace	Negligible	High	Not Significant
210	27.5	16	2	22	12.8	1.6	26	13	1	18%	2%	-38%	Negligible	N/A NorthFace	N/A NorthFace	Negligible	High	Not Significant
211	22	16	2	17.6	12.8	1.6	20.5	11	0	16%	-14%	-100%	Negligible	N/A NorthFace	N/A NorthFace	Negligible	High	Not Significant
212	22	16	2	17.6	12.8	1.6	19.5	11	0	11%	-14%	-100%	Negligible	N/A NorthFace	N/A NorthFace	Negligible	High	Not Significant
213	14.5	15	2	11.6	12	1.6	12.5	10	0	8%	-17%	-100%	Negligible	N/A NorthFace	N/A NorthFace	Negligible	Low	Not Significant
B9 16, Ellen Street																		
214	31	19	2	24.8	15.2	1.6	28.5	17	1	15%	12%	-38%	Negligible	N/A NorthFace	N/A NorthFace	Negligible	Low	Not Significant
215	31	19	2	24.8	15.2	1.6	28.5	17	1	15%	12%	-38%	Negligible	N/A NorthFace	N/A NorthFace	Negligible	Low	Not Significant
216	26.5	16	2	21.2	12.8	1.6	25	13	1	18%	2%	-38%	Negligible	N/A NorthFace	N/A NorthFace	Negligible	Low	Not Significant
217	26	16	2	20.8	12.8	1.6	25	13	1	20%	2%	-38%	Negligible	N/A NorthFace	N/A NorthFace	Negligible	Low	Not Significant
218	20	16	2	16	12.8	1.6	19	12	0	19%	-6%	-100%	Negligible	N/A NorthFace	N/A NorthFace	Negligible	Low	Not Significant
219	20.5	16	2	16.4	12.8	1.6	18.5	12	0	13%	-6%	-100%	Negligible	N/A NorthFace	N/A NorthFace	Negligible	Low	Not Significant
220	13.5	11	1	10.8	8.8	0.8	12	9	0	11%	2%	-100%	Negligible	N/A NorthFace	N/A NorthFace	Negligible	Low	Not Significant
B10 17, Ellen Street																		
221	30	19	2	24	15.2	1.6	28	17	1	17%	12%	-38%	Negligible	N/A NorthFace	N/A NorthFace	Negligible	Low	Not Significant
222	30.5	19	2	24.4	15.2	1.6	27.5	17	1	13%	12%	-38%	Negligible	N/A NorthFace	N/A NorthFace	Negligible	Low	Not Significant
223	26	16	2	20.8	12.8	1.6	23.5	12	0	13%	-6%	-100%	Negligible	N/A NorthFace	N/A NorthFace	Negligible	Low	Not Significant
224	25	16	2	20	12.8	1.6	24	13	0	20%	2%	-100%	Negligible	N/A NorthFace	N/A NorthFace	Negligible	Low	Not Significant
225	20.5	15	2	16.4	12	1.6	18.5	12	0	13%	0%	-100%	Negligible	N/A NorthFace	N/A NorthFace	Negligible	Low	Not Significant
226	20	15	2	16	12	1.6	17.5	12	0	9%	0%	-100%	Negligible	N/A NorthFace	N/A NorthFace	Negligible	Low	Not Significant
227	13.5	10	1	10.8	8	0.8	11.5	9	0	6%	13%	-100%	Negligible	N/A NorthFace	N/A NorthFace	Negligible	Low	Not Significant
B11 18, Ellen Street																		
228	30	19	2	24	15.2	1.6	27	18	1	13%	18%	-38%	Negligible	N/A NorthFace	N/A NorthFace	Negligible	High	Not Significant
229	30	19	2	24	15.2	1.6	26	18	1	8%	18%	-38%	Negligible	N/A NorthFace	N/A NorthFace	Negligible	High	Not Significant
230	25	16	2	20	12.8	1.6	23	13	0	15%	2%	-100%	Negligible	N/A NorthFace	N/A NorthFace	Negligible	High	Not Significant
231	24.5	16	2	19.6	12.8	1.6	22	13	0	12%	2%	-100%	Negligible	N/A NorthFace	N/A NorthFace	Negligible	High	Not Significant

Window Number	Existing Conditions			BRE recommended minimum target			Proposed Condition			% Deviation from Minimum Target			Predicted Impacts			Significance of Effects		
	VSC	APSH	APSH Winter (WPSH)	VSC BRE Minimum Target	APSH BRE Minimum Target	APSH Winter BRE Minimum Target	VSC	APSH	APSH Winter	VSC	APSH	APSH Winter (WPSH)	VSC Expected Impact	APSH Expected Impact	APSH Winter Expected Impact	Greatest Impact	Sensitivity	Greatest Significance
232	19.5	14	2	15.6	11.2	1.6	17.5	12	0	12%	7%	-100%	Negligible	N/A NorthFace	N/A NorthFace	Negligible	High	Not Significant
233	20	14	2	16	11.2	1.6	16.5	12	0	3%	7%	-100%	Negligible	N/A NorthFace	N/A NorthFace	Negligible	High	Not Significant
234	14	10	1	11.2	8	0.8	12.5	9	0	12%	13%	-100%	Negligible	N/A NorthFace	N/A NorthFace	Negligible	Low	Not Significant
B12 19, Ellen Street																		
235	34.5	20	2	27	16	1.6	27	19	1	0%	19%	-38%	Negligible	N/A NorthFace	N/A NorthFace	Negligible	High	Not Significant
236	34	20	2	27	16	1.6	26.5	19	1	-2%	19%	-38%	Low	N/A NorthFace	N/A NorthFace	Low	High	Significant/Moderate
237	33	21	2	26.4	16.8	1.6	26.5	19	1	0%	13%	-38%	Negligible	N/A NorthFace	N/A NorthFace	Negligible	High	Not Significant
238	28	18	2	22.4	14.4	1.6	22.5	17	1	0%	18%	-38%	Negligible	N/A NorthFace	N/A NorthFace	Negligible	High	Not Significant
239	27	18	2	21.6	14.4	1.6	20.5	17	1	-5%	18%	-38%	Low	N/A NorthFace	N/A NorthFace	Low	High	Significant/Moderate
240	27	18	2	21.6	14.4	1.6	20	17	1	-7%	18%	-38%	Low	N/A NorthFace	N/A NorthFace	Low	High	Significant/Moderate
241	20	16	2	16	12.8	1.6	16	13	0	0%	2%	-100%	Negligible	N/A NorthFace	N/A NorthFace	Negligible	High	Not Significant
242	19.5	16	2	15.6	12.8	1.6	15	13	0	-4%	2%	-100%	Low	N/A NorthFace	N/A NorthFace	Low	High	Significant/Moderate
243	19	16	2	15.2	12.8	1.6	14	13	0	-8%	2%	-100%	Low	N/A NorthFace	N/A NorthFace	Low	High	Significant/Moderate
244	13	10	1	10.4	8	0.8	11	9	0	6%	13%	-100%	Negligible	N/A NorthFace	N/A NorthFace	Negligible	Low	Not Significant
B13 Ormston House, Ellen Street																		
245	30	20	2	24	16	1.6	23	15	1	-4%	-6%	-38%	Low	N/A NorthFace	N/A NorthFace	Low	High	Significant/Moderate
246	30	19	2	24	15.2	1.6	23	15	1	-4%	-1%	-38%	Low	N/A NorthFace	N/A NorthFace	Low	High	Significant/Moderate
247	30.5	18	2	24.4	14.4	1.6	24.5	15	1	0%	4%	-38%	Negligible	N/A NorthFace	N/A NorthFace	Negligible	High	Not Significant
248	21.5	16	2	17.2	12.8	1.6	15	14	0	-13%	9%	-100%	Medium	N/A NorthFace	N/A NorthFace	Medium	High	Very Significant/Significant
249	21.5	16	2	17.2	12.8	1.6	16	14	1	-7%	9%	-38%	Low	N/A NorthFace	N/A NorthFace	Low	High	Significant/Moderate
250	21.5	16	2	17.2	12.8	1.6	16.5	13	1	-4%	2%	-38%	Low	N/A NorthFace	N/A NorthFace	Low	High	Significant/Moderate
251	14	11	1	11.2	8.8	0.8	11	10	0	-2%	14%	-100%	Low	N/A NorthFace	N/A NorthFace	Low	Low	Minor
252	17.5	11	1	14	8.8	0.8	15	7	0	7%	-20%	-100%	Negligible	N/A NorthFace	N/A NorthFace	Negligible	Low	Not Significant
B26 Arthurs Quay SC, Patrick Street																		
253	22.5	33	6	18	25	4.8	22	33	6	22%	32%	25%	Negligible	Negligible	Negligible	Negligible	Low	Not Significant
254	24	43	11	19.2	25	5	23.5	43	11	22%	72%	120%	Negligible	Negligible	Negligible	Negligible	Low	Not Significant
255	16	20	2	12.8	16	1.6	15.5	20	2	21%	25%	25%	Negligible	Negligible	Negligible	Negligible	Low	Not Significant

Window Number	Existing Conditions			BRE recommended minimum target			Proposed Condition			% Deviation from Minimum Target			Predicted Impacts			Significance of Effects		
	VSC	APSH	APSH Winter (WPSH)	VSC BRE Minimum Target	APSH BRE Minimum Target	APSH Winter BRE Minimum Target	VSC	APSH	APSH Winter	VSC	APSH	APSH Winter (WPSH)	VSC Expected Impact	APSH Expected Impact	APSH Winter Expected Impact	Greatest Impact	Sensitivity	Greatest Significance
256	18.5	27	5	14.8	21.6	4	18	27	5	22%	25%	25%	Negligible	Negligible	Negligible	Negligible	Low	Not Significant
257	24.5	47	12	19.6	25	5	24	47	12	22%	88%	140%	Negligible	Negligible	Negligible	Negligible	Low	Not Significant
258	24.5	47	13	19.6	25	5	24	47	13	22%	88%	160%	Negligible	Negligible	Negligible	Negligible	Low	Not Significant
259	19.5	30	7	15.6	24	5	19	30	7	22%	25%	40%	Negligible	Negligible	Negligible	Negligible	Low	Not Significant
260	19.5	33	7	15.6	25	5	19	33	7	22%	32%	40%	Negligible	Negligible	Negligible	Negligible	Low	Not Significant
261	23.5	46	12	18.8	25	5	23	46	12	22%	84%	140%	Negligible	Negligible	Negligible	Negligible	Low	Not Significant
262	23.5	48	12	18.8	25	5	23	46	12	22%	84%	140%	Negligible	Negligible	Negligible	Negligible	Low	Not Significant
263	19	33	7	15.2	25	5	18.5	33	7	22%	32%	40%	Negligible	Negligible	Negligible	Negligible	Low	Not Significant
264	19	32	7	15.2	25	5	18	32	7	18%	28%	40%	Negligible	Negligible	Negligible	Negligible	Low	Not Significant
265	23.5	47	12	18.8	25	5	23	45	12	22%	80%	140%	Negligible	Negligible	Negligible	Negligible	Low	Not Significant
266	23.5	45	11	18.8	25	5	22.5	44	11	20%	76%	120%	Negligible	Negligible	Negligible	Negligible	Low	Not Significant
267	18.5	32	7	14.8	25	5	18	32	7	22%	28%	40%	Negligible	Negligible	Negligible	Negligible	Low	Not Significant
268	18.5	31	7	14.8	24.8	5	18	31	7	22%	25%	40%	Negligible	Negligible	Negligible	Negligible	Low	Not Significant
269	24	43	10	19.2	25	5	23	43	10	20%	72%	100%	Negligible	Negligible	Negligible	Negligible	Low	Not Significant
270	24	48	11	19.2	25	5	22	46	11	15%	84%	120%	Negligible	Negligible	Negligible	Negligible	Low	Not Significant
271	18.5	32	7	14.8	25	5	18	32	7	22%	28%	40%	Negligible	Negligible	Negligible	Negligible	Low	Not Significant
272	19.5	37	7	15.6	25	5	18.5	34	7	19%	36%	40%	Negligible	Negligible	Negligible	Negligible	Low	Not Significant
273	24.5	47	11	19.6	25	5	23	44	11	17%	76%	120%	Negligible	Negligible	Negligible	Negligible	Low	Not Significant
274	26	47	12	20.8	25	5	23.5	44	11	13%	76%	120%	Negligible	Negligible	Negligible	Negligible	Low	Not Significant
275	22	39	8	17.6	25	5	20.5	38	8	16%	52%	60%	Negligible	Negligible	Negligible	Negligible	Low	Not Significant
276	23	41	9	18.4	25	5	21	37	8	14%	48%	60%	Negligible	Negligible	Negligible	Negligible	Low	Not Significant
277	26	48	11	20.8	25	5	24	43	10	15%	72%	100%	Negligible	Negligible	Negligible	Negligible	Low	Not Significant
278	25.5	50	12	20.4	25	5	23	41	11	13%	64%	120%	Negligible	Negligible	Negligible	Negligible	Low	Not Significant
279	21	38	9	16.8	25	5	19.5	36	9	16%	44%	80%	Negligible	Negligible	Negligible	Negligible	Low	Not Significant
280	26	47	12	20.8	25	5	23.5	41	12	13%	64%	140%	Negligible	Negligible	Negligible	Negligible	Low	Not Significant
281	25.5	47	14	20.4	25	5	23	42	14	13%	68%	180%	Negligible	Negligible	Negligible	Negligible	Low	Not Significant
282	21	35	8	16.8	25	5	19.5	34	8	16%	36%	60%	Negligible	Negligible	Negligible	Negligible	Low	Not Significant
283	22	37	11	17.6	25	5	19.5	36	11	11%	44%	120%	Negligible	Negligible	Negligible	Negligible	Low	Not Significant
284	26	47	12	20.8	25	5	24	40	12	15%	60%	140%	Negligible	Negligible	Negligible	Negligible	Low	Not Significant
285	24.5	46	13	19.6	25	5	21	39	13	7%	56%	160%	Negligible	Negligible	Negligible	Negligible	Low	Not Significant
286	20.5	36	10	16.4	25	5	17	31	10	4%	24%	100%	Negligible	Negligible	Negligible	Negligible	Low	Not Significant
287	20.5	38	11	16.4	25	5	17	31	11	4%	24%	120%	Negligible	Negligible	Negligible	Negligible	Low	Not Significant
288	23.5	47	12	18.8	25	5	20	38	12	6%	52%	140%	Negligible	Negligible	Negligible	Negligible	Low	Not Significant
289	24.5	47	11	19.6	25	5	20.5	36	10	5%	44%	100%	Negligible	Negligible	Negligible	Negligible	Low	Not Significant
290	24	45	10	19.2	25	5	20	39	10	4%	56%	100%	Negligible	Negligible	Negligible	Negligible	Low	Not Significant
291	18.5	35	9	14.8	25	5	15.5	28	9	5%	12%	80%	Negligible	Negligible	Negligible	Negligible	Low	Not Significant
292	24	46	9	19.2	25	5	20	38	9	4%	52%	80%	Negligible	Negligible	Negligible	Negligible	Low	Not Significant
293	24	47	9	19.2	25	5	20	40	8	4%	60%	60%	Negligible	Negligible	Negligible	Negligible	Low	Not Significant
294	24.5	46	8	19.6	25	5	20.5	40	7	5%	60%	40%	Negligible	Negligible	Negligible	Negligible	Low	Not Significant
295	19	36	7	15.2	25	5	15	26	6	-1%	4%	20%	Low	Negligible	Negligible	Low	Low	Minor
296	19	34	6	15.2	25	4.8	15.5	27	6	2%	8%	25%	Negligible	Negligible	Negligible	Negligible	Low	Not Significant

Window Number	Existing Conditions			BRE recommended minimum target			Proposed Condition			% Deviation from Minimum Target			Predicted Impacts			Significance of Effects		
	VSC	APSH	APSH Winter (WPSH)	VSC BRE Minimum Target	APSH BRE Minimum Target	APSH Winter BRE Minimum Target	VSC	APSH	APSH Winter	VSC	APSH	APSH Winter (WPSH)	VSC Expected Impact	APSH Expected Impact	APSH Winter Expected Impact	Greatest Impact	Sensitivity	Greatest Significance
297	23.5	47	10	18.8	25	5	21	42	8	12%	68%	60%	Negligible	Negligible	Negligible	Negligible	Low	Not Significant
298	24.5	49	11	19.6	25	5	21.5	44	8	10%	76%	60%	Negligible	Negligible	Negligible	Negligible	Low	Not Significant
299	19.5	35	6	15.6	25	4.8	16.5	29	6	6%	16%	25%	Negligible	Negligible	Negligible	Negligible	Low	Not Significant
300	20	37	7	16	25	5	16.5	31	6	3%	24%	20%	Negligible	Negligible	Negligible	Negligible	Low	Not Significant
301	24.5	47	10	19.6	25	5	22	43	7	12%	72%	40%	Negligible	Negligible	Negligible	Negligible	Low	Not Significant
302	25	47	10	20	25	5	22.5	45	8	13%	80%	60%	Negligible	Negligible	Negligible	Negligible	Low	Not Significant
303	19.5	37	7	15.6	25	5	16.5	33	6	6%	32%	20%	Negligible	Negligible	Negligible	Negligible	Low	Not Significant
304	19	35	6	15.2	25	4.8	16.5	31	5	9%	24%	4%	Negligible	Negligible	Negligible	Negligible	Low	Not Significant
305	25	48	11	20	25	5	23.5	47	9	18%	88%	80%	Negligible	Negligible	Negligible	Negligible	Low	Not Significant
306	19	36	7	15.2	25	5	17	33	5	12%	32%	0%	Negligible	Negligible	Negligible	Negligible	Low	Not Significant
307	24.5	48	12	19.6	25	5	23	46	9	17%	84%	80%	Negligible	Negligible	Negligible	Negligible	Low	Not Significant
308	19.5	36	7	15.6	25	5	18	33	5	15%	32%	0%	Negligible	Negligible	Negligible	Negligible	Low	Not Significant
309	24	46	10	19.2	25	5	23	45	8	20%	80%	60%	Negligible	Negligible	Negligible	Negligible	Low	Not Significant
310	19.5	36	8	15.6	25	5	18	32	4	15%	28%	-20%	Negligible	Negligible	Medium	Medium	Low	Moderate/Slight
311	24.5	47	11	19.6	25	5	23.5	45	9	20%	80%	80%	Negligible	Negligible	Negligible	Negligible	Low	Not Significant
312	19.5	36	8	15.6	25	5	18.5	33	5	19%	32%	0%	Negligible	Negligible	Negligible	Negligible	Low	Not Significant
313	24	47	11	19.2	25	5	22.5	46	10	17%	84%	100%	Negligible	Negligible	Negligible	Negligible	Low	Not Significant
314	19.5	36	8	15.6	25	5	19	34	5	22%	36%	0%	Negligible	Negligible	Negligible	Negligible	Low	Not Significant
315	24	48	12	19.2	25	5	23	48	11	20%	92%	120%	Negligible	Negligible	Negligible	Negligible	Low	Not Significant
316	20	36	8	16	25	5	18.5	38	6	16%	52%	20%	Negligible	Negligible	Negligible	Negligible	Low	Not Significant
317	24	48	13	19.2	25	5	23.5	50	12	22%	100%	140%	Negligible	Negligible	Negligible	Negligible	Low	Not Significant
318	20.5	39	10	16.4	25	5	20	37	6	22%	48%	20%	Negligible	Negligible	Negligible	Negligible	Low	Not Significant
B14 Arthurs Quay SC, Francis Street																		
319	24.5	18	2	19.6	14.4	1.6	23	20	1	17%	39%	-38%	Negligible	N/A NorthFace	N/A NorthFace	Negligible	Low	Not Significant
320	31.5	34	7	25.2	25	5	29	34	7	15%	36%	40%	Negligible	N/A NorthFace	N/A NorthFace	Negligible	Low	Not Significant
321	39	39	9	27	25	5	34.5	37	8	28%	48%	60%	Negligible	N/A NorthFace	N/A NorthFace	Negligible	Low	Not Significant
322	20	4	0	16	3.2	0	18.5	4	0	16%	25%	0%	Negligible	N/A NorthFace	N/A NorthFace	Negligible	Low	Not Significant
323	19.5	7	0	15.6	5.6	0	18	5	0	15%	-11%	0%	Negligible	N/A NorthFace	N/A NorthFace	Negligible	Low	Not Significant
B15 Sarsfield House, Francis Street																		
324	40	82	30	27	25	5	40	82	30	48%	228%	500%	Negligible	Negligible	Negligible	Negligible	Low	Not Significant
325	38	82	30	27	25	5	37.5	81	29	39%	224%	480%	Negligible	Negligible	Negligible	Negligible	Low	Not Significant
326	34.5	81	29	27	25	5	34.5	80	28	28%	220%	460%	Negligible	Negligible	Negligible	Negligible	Low	Not Significant
327	31.5	73	21	25.2	25	5	31.5	73	21	25%	192%	320%	Negligible	Negligible	Negligible	Negligible	Low	Not Significant
328	40	86	30	27	25	5	40	86	30	48%	244%	500%	Negligible	Negligible	Negligible	Negligible	Low	Not Significant
329	40	86	30	27	25	5	40	86	30	48%	244%	500%	Negligible	Negligible	Negligible	Negligible	Low	Not Significant
330	40	86	30	27	25	5	40	86	30	48%	244%	500%	Negligible	Negligible	Negligible	Negligible	Low	Not Significant
331	40	86	30	27	25	5	40	86	30	48%	244%	500%	Negligible	Negligible	Negligible	Negligible	Low	Not Significant

Window Number	Existing Conditions			BRE recommended minimum target			Proposed Condition			% Deviation from Minimum Target			Predicted Impacts			Significance of Effects		
	VSC	APSH	APSH Winter (WPSH)	VSC BRE Minimum Target	APSH BRE Minimum Target	APSH Winter BRE Minimum Target	VSC	APSH	APSH Winter	VSC	APSH	APSH Winter (WPSH)	VSC Expected Impact	APSH Expected Impact	APSH Winter Expected Impact	Greatest Impact	Sensitivity	Greatest Significance
373	39.5	82	30	27	25	5	38.5	81	29	43%	224%	480%	Negligible	Negligible	Negligible	Negligible	Low	Not Significant
374	39.5	82	30	27	25	5	38.5	81	29	43%	224%	480%	Negligible	Negligible	Negligible	Negligible	Low	Not Significant
375	39.5	82	30	27	25	5	38.5	81	29	43%	224%	480%	Negligible	Negligible	Negligible	Negligible	Low	Not Significant
376	39.5	82	30	27	25	5	38.5	81	29	43%	224%	480%	Negligible	Negligible	Negligible	Negligible	Low	Not Significant
377	39	82	30	27	25	5	38	81	29	41%	224%	480%	Negligible	Negligible	Negligible	Negligible	Low	Not Significant
378	39.5	82	30	27	25	5	38.5	81	29	43%	224%	480%	Negligible	Negligible	Negligible	Negligible	Low	Not Significant
379	39.5	82	30	27	25	5	38	81	29	41%	224%	480%	Negligible	Negligible	Negligible	Negligible	Low	Not Significant
380	39.5	82	30	27	25	5	38	81	29	41%	224%	480%	Negligible	Negligible	Negligible	Negligible	Low	Not Significant
381	39	82	30	27	25	5	38	81	29	41%	224%	480%	Negligible	Negligible	Negligible	Negligible	Low	Not Significant
382	40	82	30	27	25	5	38.5	81	29	43%	224%	480%	Negligible	Negligible	Negligible	Negligible	Low	Not Significant
383	39.5	82	30	27	25	5	38	81	29	41%	224%	480%	Negligible	Negligible	Negligible	Negligible	Low	Not Significant
384	35	80	28	27	25	5	34.5	79	27	28%	216%	440%	Negligible	Negligible	Negligible	Negligible	Low	Not Significant
385	35	80	28	27	25	5	34.5	79	27	28%	216%	440%	Negligible	Negligible	Negligible	Negligible	Low	Not Significant
386	34	80	28	27	25	5	34	79	27	26%	216%	440%	Negligible	Negligible	Negligible	Negligible	Low	Not Significant
387	34	80	28	27	25	5	34	79	27	26%	216%	440%	Negligible	Negligible	Negligible	Negligible	Low	Not Significant
388	34	80	28	27	25	5	34	79	27	26%	216%	440%	Negligible	Negligible	Negligible	Negligible	Low	Not Significant
389	34	80	28	27	25	5	34	79	27	26%	216%	440%	Negligible	Negligible	Negligible	Negligible	Low	Not Significant
390	35	80	28	27	25	5	35	79	27	30%	216%	440%	Negligible	Negligible	Negligible	Negligible	Low	Not Significant
391	35	79	27	27	25	5	35	79	27	30%	216%	440%	Negligible	Negligible	Negligible	Negligible	Low	Not Significant
392	35	78	26	27	25	5	34.5	78	26	28%	212%	420%	Negligible	Negligible	Negligible	Negligible	Low	Not Significant
393	35	78	26	27	25	5	34.5	78	26	28%	212%	420%	Negligible	Negligible	Negligible	Negligible	Low	Not Significant
394	35	78	26	27	25	5	34.5	78	26	28%	212%	420%	Negligible	Negligible	Negligible	Negligible	Low	Not Significant
395	35	78	26	27	25	5	34.5	78	26	28%	212%	420%	Negligible	Negligible	Negligible	Negligible	Low	Not Significant
396	35	78	26	27	25	5	34.5	78	26	28%	212%	420%	Negligible	Negligible	Negligible	Negligible	Low	Not Significant
397	36	78	26	27	25	5	35	78	26	30%	212%	420%	Negligible	Negligible	Negligible	Negligible	Low	Not Significant
398	36	78	26	27	25	5	35	78	26	30%	212%	420%	Negligible	Negligible	Negligible	Negligible	Low	Not Significant
399	35	78	26	27	25	5	34.5	78	26	28%	212%	420%	Negligible	Negligible	Negligible	Negligible	Low	Not Significant
400	35	78	26	27	25	5	34.5	78	26	28%	212%	420%	Negligible	Negligible	Negligible	Negligible	Low	Not Significant
401	35	78	26	27	25	5	34.5	78	26	28%	212%	420%	Negligible	Negligible	Negligible	Negligible	Low	Not Significant
402	35.5	78	26	27	25	5	35	78	26	30%	212%	420%	Negligible	Negligible	Negligible	Negligible	Low	Not Significant
403	35	78	26	27	25	5	34.5	78	26	28%	212%	420%	Negligible	Negligible	Negligible	Negligible	Low	Not Significant
404	35	78	26	27	25	5	34.5	77	25	28%	208%	400%	Negligible	Negligible	Negligible	Negligible	Low	Not Significant
405	35.5	78	26	27	25	5	34.5	77	25	28%	208%	400%	Negligible	Negligible	Negligible	Negligible	Low	Not Significant
406	35.5	78	26	27	25	5	34.5	77	25	28%	208%	400%	Negligible	Negligible	Negligible	Negligible	Low	Not Significant
407	35.5	77	25	27	25	5	34.5	77	25	28%	208%	400%	Negligible	Negligible	Negligible	Negligible	Low	Not Significant
408	31.5	73	21	25.2	25	5	31.5	73	21	25%	192%	320%	Negligible	Negligible	Negligible	Negligible	Low	Not Significant
409	31.5	73	21	25.2	25	5	31.5	73	21	25%	192%	320%	Negligible	Negligible	Negligible	Negligible	Low	Not Significant
410	31.5	72	20	25.2	25	5	31.5	72	20	25%	188%	300%	Negligible	Negligible	Negligible	Negligible	Low	Not Significant
411	31.5	72	20	25.2	25	5	31.5	72	20	25%	188%	300%	Negligible	Negligible	Negligible	Negligible	Low	Not Significant
412	31.5	72	20	25.2	25	5	31.5	72	20	25%	188%	300%	Negligible	Negligible	Negligible	Negligible	Low	Not Significant
413	31.5	72	20	25.2	25	5	31.5	72	20	25%	188%	300%	Negligible	Negligible	Negligible	Negligible	Low	Not Significant

Window Number	Existing Conditions			BRE recommended minimum target			Proposed Condition			% Deviation from Minimum Target			Predicted Impacts			Significance of Effects		
	VSC	APSH	APSH Winter (WPSH)	VSC BRE Minimum Target	APSH BRE Minimum Target	APSH Winter BRE Minimum Target	VSC	APSH	APSH Winter	VSC	APSH	APSH Winter (WPSH)	VSC Expected Impact	APSH Expected Impact	APSH Winter Expected Impact	Greatest Impact	Sensitivity	Greatest Significance
414	31.5	72	20	25.2	25	5	31.5	72	20	25%	188%	300%	Negligible	Negligible	Negligible	Negligible	Low	Not Significant
415	32	72	20	25.6	25	5	32	72	20	25%	188%	300%	Negligible	Negligible	Negligible	Negligible	Low	Not Significant
416	32	72	20	25.6	25	5	31.5	72	20	23%	188%	300%	Negligible	Negligible	Negligible	Negligible	Low	Not Significant
417	32	72	20	25.6	25	5	31.5	72	20	23%	188%	300%	Negligible	Negligible	Negligible	Negligible	Low	Not Significant
418	32	73	21	25.6	25	5	31.5	73	21	23%	192%	320%	Negligible	Negligible	Negligible	Negligible	Low	Not Significant
419	32.5	73	21	26	25	5	32	73	21	23%	192%	320%	Negligible	Negligible	Negligible	Negligible	Low	Not Significant
420	32	73	21	25.6	25	5	32	73	21	25%	192%	320%	Negligible	Negligible	Negligible	Negligible	Low	Not Significant
421	32	73	21	25.6	25	5	32	73	21	25%	192%	320%	Negligible	Negligible	Negligible	Negligible	Low	Not Significant
422	32	73	21	25.6	25	5	32	73	21	25%	192%	320%	Negligible	Negligible	Negligible	Negligible	Low	Not Significant
423	32	73	21	25.6	25	5	32	73	21	25%	192%	320%	Negligible	Negligible	Negligible	Negligible	Low	Not Significant
424	32.5	73	21	26	25	5	32.5	73	21	25%	192%	320%	Negligible	Negligible	Negligible	Negligible	Low	Not Significant
425	32	74	22	25.6	25	5	32.5	74	22	27%	196%	340%	Negligible	Negligible	Negligible	Negligible	Low	Not Significant
426	32	74	22	25.6	25	5	32.5	74	22	27%	196%	340%	Negligible	Negligible	Negligible	Negligible	Low	Not Significant
427	32.5	75	23	26	25	5	33	75	23	27%	200%	360%	Negligible	Negligible	Negligible	Negligible	Low	Not Significant
428	32.5	75	23	26	25	5	33	75	23	27%	200%	360%	Negligible	Negligible	Negligible	Negligible	Low	Not Significant
429	33	75	23	26.4	25	5	32.5	75	23	23%	200%	360%	Negligible	Negligible	Negligible	Negligible	Low	Not Significant
430	33	76	24	26.4	25	5	32.5	75	23	23%	200%	360%	Negligible	Negligible	Negligible	Negligible	Low	Not Significant
431	32.5	74	22	26	25	5	32	73	21	23%	192%	320%	Negligible	Negligible	Negligible	Negligible	Low	Not Significant
432	27.5	67	15	22	25	5	28	67	15	27%	168%	200%	Negligible	Negligible	Negligible	Negligible	Low	Not Significant
433	27.5	67	15	22	25	5	28	67	15	27%	168%	200%	Negligible	Negligible	Negligible	Negligible	Low	Not Significant
434	27.5	67	15	22	25	5	28	67	15	27%	168%	200%	Negligible	Negligible	Negligible	Negligible	Low	Not Significant
435	28	67	15	22.4	25	5	28.5	67	15	27%	168%	200%	Negligible	Negligible	Negligible	Negligible	Low	Not Significant
436	28	68	16	22.4	25	5	28.5	68	16	27%	172%	220%	Negligible	Negligible	Negligible	Negligible	Low	Not Significant
437	28	68	16	22.4	25	5	28	68	16	25%	172%	220%	Negligible	Negligible	Negligible	Negligible	Low	Not Significant
438	27.5	67	15	22	25	5	27.5	67	15	25%	168%	200%	Negligible	Negligible	Negligible	Negligible	Low	Not Significant
439	28	68	16	22.4	25	5	28	68	16	25%	172%	220%	Negligible	Negligible	Negligible	Negligible	Low	Not Significant
440	28.5	68	16	22.8	25	5	28.5	68	16	25%	172%	220%	Negligible	Negligible	Negligible	Negligible	Low	Not Significant
441	28.5	68	16	22.8	25	5	28.5	68	16	25%	172%	220%	Negligible	Negligible	Negligible	Negligible	Low	Not Significant
442	28	68	16	22.4	25	5	28	68	16	25%	172%	220%	Negligible	Negligible	Negligible	Negligible	Low	Not Significant
443	28.5	69	17	22.8	25	5	28.5	69	17	25%	176%	240%	Negligible	Negligible	Negligible	Negligible	Low	Not Significant
444	28.5	69	17	22.8	25	5	28.5	69	17	25%	176%	240%	Negligible	Negligible	Negligible	Negligible	Low	Not Significant
445	29	69	17	23.2	25	5	28	69	17	21%	176%	240%	Negligible	Negligible	Negligible	Negligible	Low	Not Significant
446	29.5	70	18	23.6	25	5	28.5	69	17	21%	176%	240%	Negligible	Negligible	Negligible	Negligible	Low	Not Significant
447	28.5	69	17	22.8	25	5	28.5	69	17	25%	176%	240%	Negligible	Negligible	Negligible	Negligible	Low	Not Significant
448	28.5	69	17	22.8	25	5	28.5	68	16	25%	172%	220%	Negligible	Negligible	Negligible	Negligible	Low	Not Significant
449	28	67	15	22.4	25	5	28	68	16	25%	172%	220%	Negligible	Negligible	Negligible	Negligible	Low	Not Significant
450	28	68	16	22.4	25	5	28	69	17	25%	176%	240%	Negligible	Negligible	Negligible	Negligible	Low	Not Significant
451	28.5	68	16	22.8	25	5	28.5	69	17	25%	176%	240%	Negligible	Negligible	Negligible	Negligible	Low	Not Significant
452	28.5	69	17	22.8	25	5	28.5	69	17	25%	176%	240%	Negligible	Negligible	Negligible	Negligible	Low	Not Significant
453	28.5	67	15	22.8	25	5	28.5	69	17	25%	176%	240%	Negligible	Negligible	Negligible	Negligible	Low	Not Significant
454	28.5	67	15	22.8	25	5	28.5	68	16	25%	172%	220%	Negligible	Negligible	Negligible	Negligible	Low	Not Significant

Window Number	Existing Conditions			BRE recommended minimum target			Proposed Condition			% Deviation from Minimum Target			Predicted Impacts			Significance of Effects		
	VSC	APSH	APSH Winter (WPSH)	VSC BRE Minimum Target	APSH BRE Minimum Target	APSH Winter BRE Minimum Target	VSC	APSH	APSH Winter	VSC	APSH	APSH Winter (WPSH)	VSC Expected Impact	APSH Expected Impact	APSH Winter Expected Impact	Greatest Impact	Sensitivity	Greatest Significance
455	28.5	68	16	22.8	25	5	28.5	69	17	25%	176%	240%	Negligible	Negligible	Negligible	Negligible	Low	Not Significant
456	23	59	7	18.4	25	5	23	59	7	25%	136%	40%	Negligible	Negligible	Negligible	Negligible	Low	Not Significant
457	22.5	60	8	18	25	5	22.5	60	8	25%	140%	60%	Negligible	Negligible	Negligible	Negligible	Low	Not Significant
458	23	60	9	18.4	25	5	23	60	9	25%	140%	80%	Negligible	Negligible	Negligible	Negligible	Low	Not Significant
459	23.5	58	7	18.8	25	5	24	59	8	28%	136%	60%	Negligible	Negligible	Negligible	Negligible	Low	Not Significant
460	24	61	10	19.2	25	5	24	62	11	25%	148%	120%	Negligible	Negligible	Negligible	Negligible	Low	Not Significant
461	24.5	61	11	19.6	25	5	25	60	10	28%	140%	100%	Negligible	Negligible	Negligible	Negligible	Low	Not Significant
B27 Sarsfield House, Rutland Street																		
462	40	55	18	27	25	5	34.5	51	18	28%	104%	260%	Negligible	Negligible	Negligible	Negligible	Low	Not Significant
463	40	55	18	27	25	5	34.5	51	18	28%	104%	260%	Negligible	Negligible	Negligible	Negligible	Low	Not Significant
464	40	55	18	27	25	5	34.5	51	18	28%	104%	260%	Negligible	Negligible	Negligible	Negligible	Low	Not Significant
465	38	54	17	27	25	5	32.5	50	17	20%	100%	240%	Negligible	Negligible	Negligible	Negligible	Low	Not Significant
466	38	55	18	27	25	5	32.5	51	18	20%	104%	260%	Negligible	Negligible	Negligible	Negligible	Low	Not Significant
467	39	55	18	27	25	5	32.5	51	18	20%	104%	260%	Negligible	Negligible	Negligible	Negligible	Low	Not Significant
468	34	52	16	27	25	5	29.5	48	16	9%	92%	220%	Negligible	Negligible	Negligible	Negligible	Low	Not Significant
469	34.5	52	16	27	25	5	29.5	48	16	9%	92%	220%	Negligible	Negligible	Negligible	Negligible	Low	Not Significant
470	35.5	53	17	27	25	5	30.5	48	16	13%	92%	220%	Negligible	Negligible	Negligible	Negligible	Low	Not Significant
471	31.5	48	13	25.2	25	5	27.5	45	13	9%	80%	160%	Negligible	Negligible	Negligible	Negligible	Low	Not Significant
472	31.5	49	15	25.2	25	5	28	45	13	11%	80%	160%	Negligible	Negligible	Negligible	Negligible	Low	Not Significant
473	32	49	15	25.6	25	5	28.5	45	13	11%	80%	160%	Negligible	Negligible	Negligible	Negligible	Low	Not Significant
474	27.5	41	10	22	25	5	24	41	11	9%	64%	120%	Negligible	Negligible	Negligible	Negligible	Low	Not Significant
475	27.5	40	10	22	25	5	24.5	40	10	11%	60%	100%	Negligible	Negligible	Negligible	Negligible	Low	Not Significant
476	27.5	41	10	22	25	5	24	39	10	9%	56%	100%	Negligible	Negligible	Negligible	Negligible	Low	Not Significant
477	24	36	8	19.2	25	5	21.5	36	8	12%	44%	60%	Negligible	Negligible	Negligible	Negligible	Low	Not Significant
478	23.5	36	8	18.8	25	5	22	35	8	17%	40%	60%	Negligible	Negligible	Negligible	Negligible	Negligible	Imperceptible
479	33.5	52	16	26.8	25	5	30	47	16	12%	88%	220%	Negligible	Negligible	Negligible	Negligible	Negligible	Imperceptible
480	40	55	18	27	25	5	35	50	18	30%	100%	260%	Negligible	Negligible	Negligible	Negligible	Low	Not Significant
481	40	55	18	27	25	5	35	50	18	30%	100%	260%	Negligible	Negligible	Negligible	Negligible	Low	Not Significant
482	40	55	18	27	25	5	34.5	49	18	28%	96%	260%	Negligible	Negligible	Negligible	Negligible	Low	Not Significant
483	40	55	18	27	25	5	34.5	49	18	28%	96%	260%	Negligible	Negligible	Negligible	Negligible	Low	Not Significant
484	38.5	54	17	27	25	5	33	49	17	22%	96%	240%	Negligible	Negligible	Negligible	Negligible	Low	Not Significant
485	38	55	18	27	25	5	32.5	49	18	20%	96%	260%	Negligible	Negligible	Negligible	Negligible	Low	Not Significant
486	38	55	18	27	25	5	32.5	49	18	20%	96%	260%	Negligible	Negligible	Negligible	Negligible	Low	Not Significant
487	37.5	55	18	27	25	5	32	49	18	19%	96%	260%	Negligible	Negligible	Negligible	Negligible	Low	Not Significant
488	35	52	16	27	25	5	31	47	16	15%	88%	220%	Negligible	Negligible	Negligible	Negligible	Low	Not Significant
489	35	52	16	27	25	5	30.5	46	16	13%	84%	220%	Negligible	Negligible	Negligible	Negligible	Low	Not Significant
490	35	52	16	27	25	5	30	46	16	11%	84%	220%	Negligible	Negligible	Negligible	Negligible	Low	Not Significant
491	35	52	16	27	25	5	30	45	16	11%	80%	220%	Negligible	Negligible	Negligible	Negligible	Low	Not Significant
492	31.5	49	15	25.2	25	5	28.5	47	16	13%	88%	220%	Negligible	Negligible	Negligible	Negligible	Low	Not Significant
493	32	49	15	25.6	25	5	29.5	46	16	15%	84%	220%	Negligible	Negligible	Negligible	Negligible	Low	Not Significant
494	32	49	15	25.6	25	5	29	45	16	13%	80%	220%	Negligible	Negligible	Negligible	Negligible	Low	Not Significant

Window Number	Existing Conditions			BRE recommended minimum target			Proposed Condition			% Deviation from Minimum Target			Predicted Impacts			Significance of Effects		
	VSC	APSH	APSH Winter (WPSH)	VSC BRE Minimum Target	APSH BRE Minimum Target	APSH Winter BRE Minimum Target	VSC	APSH	APSH Winter	VSC	APSH	APSH Winter (WPSH)	VSC Expected Impact	APSH Expected Impact	APSH Winter Expected Impact	Greatest Impact	Sensitivity	Greatest Significance
495	32	50	15	25.6	25	5	29	44	15	13%	76%	200%	Negligible	Negligible	Negligible	Negligible	Low	Not Significant
496	29	41	10	23.2	25	5	26.5	39	10	14%	56%	100%	Negligible	Negligible	Negligible	Negligible	Low	Not Significant
497	29.5	42	11	23.6	25	5	27	39	11	14%	56%	120%	Negligible	Negligible	Negligible	Negligible	Low	Not Significant
498	29.5	42	11	23.6	25	5	27	38	11	14%	52%	120%	Negligible	Negligible	Negligible	Negligible	Low	Not Significant
499	29	42	11	23.2	25	5	26	38	11	12%	52%	120%	Negligible	Negligible	Negligible	Negligible	Low	Not Significant
500	25.5	38	9	20.4	25	5	23.5	36	9	15%	44%	80%	Negligible	Negligible	Negligible	Negligible	Low	Not Significant
501	40	12	0	27	9.6	0	37.5	7	0	39%	-27%	0%	Negligible	N/A NorthFace	N/A NorthFace	Negligible	Low	Not Significant
502	40	12	0	27	9.6	0	38.5	7	0	43%	-27%	0%	Negligible	N/A NorthFace	N/A NorthFace	Negligible	Low	Not Significant
503	40	12	0	27	9.6	0	38.5	8	0	43%	-17%	0%	Negligible	N/A NorthFace	N/A NorthFace	Negligible	Low	Not Significant
504	40	12	0	27	9.6	0	38.5	8	0	43%	-17%	0%	Negligible	N/A NorthFace	N/A NorthFace	Negligible	Low	Not Significant
505	40	12	0	27	9.6	0	38.5	8	0	43%	-17%	0%	Negligible	N/A NorthFace	N/A NorthFace	Negligible	Low	Not Significant
506	40	12	0	27	9.6	0	38.5	8	0	43%	-17%	0%	Negligible	N/A NorthFace	N/A NorthFace	Negligible	Low	Not Significant
507	40	12	0	27	9.6	0	39	9	0	44%	-6%	0%	Negligible	N/A NorthFace	N/A NorthFace	Negligible	Low	Not Significant
508	40	12	0	27	9.6	0	39	9	0	44%	-6%	0%	Negligible	N/A NorthFace	N/A NorthFace	Negligible	Low	Not Significant
509	40	10	0	27	8	0	37.5	2	0	39%	-75%	0%	Negligible	N/A NorthFace	N/A NorthFace	Negligible	Low	Not Significant
510	40	10	0	27	8	0	37.5	2	0	39%	-75%	0%	Negligible	N/A NorthFace	N/A NorthFace	Negligible	Low	Not Significant
511	40	10	0	27	8	0	38	2	0	41%	-75%	0%	Negligible	N/A NorthFace	N/A NorthFace	Negligible	Low	Not Significant
512	40	10	0	27	8	0	38.5	3	0	43%	-63%	0%	Negligible	N/A NorthFace	N/A NorthFace	Negligible	Low	Not Significant
513	40	10	0	27	8	0	38.5	4	0	43%	-50%	0%	Negligible	N/A NorthFace	N/A NorthFace	Negligible	Low	Not Significant
514	40	10	0	27	8	0	38.5	4	0	43%	-50%	0%	Negligible	N/A NorthFace	N/A NorthFace	Negligible	Low	Not Significant
515	40	10	0	27	8	0	38.5	4	0	43%	-50%	0%	Negligible	N/A NorthFace	N/A NorthFace	Negligible	Low	Not Significant
516	40	10	0	27	8	0	38.5	4	0	43%	-50%	0%	Negligible	N/A NorthFace	N/A NorthFace	Negligible	Low	Not Significant
517	40	10	0	27	8	0	38.5	4	0	43%	-50%	0%	Negligible	N/A NorthFace	N/A NorthFace	Negligible	Low	Not Significant
518	40	10	0	27	8	0	38.5	5	0	43%	-38%	0%	Negligible	N/A NorthFace	N/A NorthFace	Negligible	Low	Not Significant
519	40	10	0	27	8	0	38.5	5	0	43%	-38%	0%	Negligible	N/A NorthFace	N/A NorthFace	Negligible	Low	Not Significant
520	40	10	0	27	8	0	38.5	5	0	43%	-38%	0%	Negligible	N/A NorthFace	N/A NorthFace	Negligible	Low	Not Significant
521	40	10	0	27	8	0	38.5	5	0	43%	-38%	0%	Negligible	N/A NorthFace	N/A NorthFace	Negligible	Low	Not Significant

Window Number	Existing Conditions			BRE recommended minimum target			Proposed Condition			% Deviation from Minimum Target			Predicted Impacts			Significance of Effects		
	VSC	APSH	APSH Winter (WPSH)	VSC BRE Minimum Target	APSH BRE Minimum Target	APSH Winter BRE Minimum Target	VSC	APSH	APSH Winter	VSC	APSH	APSH Winter (WPSH)	VSC Expected Impact	APSH Expected Impact	APSH Winter Expected Impact	Greatest Impact	Sensitivity	Greatest Significance
522	40	10	0	27	8	0	38.5	5	0	43%	-38%	0%	Negligible	N/A NorthFace	N/A NorthFace	Negligible	Low	Not Significant
523	40	10	0	27	8	0	38.5	5	0	43%	-38%	0%	Negligible	N/A NorthFace	N/A NorthFace	Negligible	Low	Not Significant
524	40	10	0	27	8	0	38.5	5	0	43%	-38%	0%	Negligible	N/A NorthFace	N/A NorthFace	Negligible	Low	Not Significant
525	40	10	0	27	8	0	38.5	5	0	43%	-38%	0%	Negligible	N/A NorthFace	N/A NorthFace	Negligible	Low	Not Significant
526	40	10	0	27	8	0	38.5	5	0	43%	-38%	0%	Negligible	N/A NorthFace	N/A NorthFace	Negligible	Low	Not Significant
527	40	10	0	27	8	0	38.5	5	0	43%	-38%	0%	Negligible	N/A NorthFace	N/A NorthFace	Negligible	Low	Not Significant
528	40	10	0	27	8	0	38.5	6	0	43%	-25%	0%	Negligible	N/A NorthFace	N/A NorthFace	Negligible	Low	Not Significant
529	40	10	0	27	8	0	39	8	0	44%	0%	0%	Negligible	N/A NorthFace	N/A NorthFace	Negligible	Low	Not Significant
530	40	10	0	27	8	0	39	8	0	44%	0%	0%	Negligible	N/A NorthFace	N/A NorthFace	Negligible	Low	Not Significant
531	40	10	0	27	8	0	39	8	0	44%	0%	0%	Negligible	N/A NorthFace	N/A NorthFace	Negligible	Low	Not Significant
532	40	10	0	27	8	0	39	8	0	44%	0%	0%	Negligible	N/A NorthFace	N/A NorthFace	Negligible	Low	Not Significant
533	39.5	10	0	27	8	0	37.5	2	0	39%	-75%	0%	Negligible	N/A NorthFace	N/A NorthFace	Negligible	Low	Not Significant
534	39.5	10	0	27	8	0	37.5	2	0	39%	-75%	0%	Negligible	N/A NorthFace	N/A NorthFace	Negligible	Low	Not Significant
535	40	10	0	27	8	0	38	2	0	41%	-75%	0%	Negligible	N/A NorthFace	N/A NorthFace	Negligible	Low	Not Significant
536	40	10	0	27	8	0	38.5	2	0	43%	-75%	0%	Negligible	N/A NorthFace	N/A NorthFace	Negligible	Low	Not Significant
537	40	10	0	27	8	0	38.5	2	0	43%	-75%	0%	Negligible	N/A NorthFace	N/A NorthFace	Negligible	Low	Not Significant
538	40	10	0	27	8	0	38.5	2	0	43%	-75%	0%	Negligible	N/A NorthFace	N/A NorthFace	Negligible	Low	Not Significant
539	40	10	0	27	8	0	38.5	2	0	43%	-75%	0%	Negligible	N/A NorthFace	N/A NorthFace	Negligible	Low	Not Significant
540	40	10	0	27	8	0	38.5	3	0	43%	-63%	0%	Negligible	N/A NorthFace	N/A NorthFace	Negligible	Low	Not Significant
541	40	10	0	27	8	0	38.5	4	0	43%	-50%	0%	Negligible	N/A NorthFace	N/A NorthFace	Negligible	Low	Not Significant
542	40	10	0	27	8	0	38.5	4	0	43%	-50%	0%	Negligible	N/A NorthFace	N/A NorthFace	Negligible	Low	Not Significant
543	40	10	0	27	8	0	38.5	4	0	43%	-50%	0%	Negligible	N/A NorthFace	N/A NorthFace	Negligible	Low	Not Significant
544	40	10	0	27	8	0	38.5	4	0	43%	-50%	0%	Negligible	N/A NorthFace	N/A NorthFace	Negligible	Low	Not Significant
545	40	10	0	27	8	0	38.5	4	0	43%	-50%	0%	Negligible	N/A NorthFace	N/A NorthFace	Negligible	Low	Not Significant
546	40	10	0	27	8	0	38.5	5	0	43%	-38%	0%	Negligible	N/A NorthFace	N/A NorthFace	Negligible	Low	Not Significant

Window Number	Existing Conditions			BRE recommended minimum target			Proposed Condition			% Deviation from Minimum Target			Predicted Impacts			Significance of Effects		
	VSC	APSH	APSH Winter (WPSH)	VSC BRE Minimum Target	APSH BRE Minimum Target	APSH Winter BRE Minimum Target	VSC	APSH	APSH Winter	VSC	APSH	APSH Winter (WPSH)	VSC Expected Impact	APSH Expected Impact	APSH Winter Expected Impact	Greatest Impact	Sensitivity	Greatest Significance
547	40	10	0	27	8	0	38.5	5	0	43%	-38%	0%	Negligible	N/A NorthFace	N/A NorthFace	Negligible	Low	Not Significant
548	40	10	0	27	8	0	38.5	5	0	43%	-38%	0%	Negligible	N/A NorthFace	N/A NorthFace	Negligible	Low	Not Significant
549	40	10	0	27	8	0	38.5	5	0	43%	-38%	0%	Negligible	N/A NorthFace	N/A NorthFace	Negligible	Low	Not Significant
550	40	10	0	27	8	0	38.5	5	0	43%	-38%	0%	Negligible	N/A NorthFace	N/A NorthFace	Negligible	Low	Not Significant
551	40	10	0	27	8	0	38.5	5	0	43%	-38%	0%	Negligible	N/A NorthFace	N/A NorthFace	Negligible	Low	Not Significant
552	40	10	0	27	8	0	38.5	6	0	43%	-25%	0%	Negligible	N/A NorthFace	N/A NorthFace	Negligible	Low	Not Significant
553	40	10	0	27	8	0	39	7	0	44%	-13%	0%	Negligible	N/A NorthFace	N/A NorthFace	Negligible	Low	Not Significant
554	40	10	0	27	8	0	39	7	0	44%	-13%	0%	Negligible	N/A NorthFace	N/A NorthFace	Negligible	Low	Not Significant
555	40	10	0	27	8	0	39	7	0	44%	-13%	0%	Negligible	N/A NorthFace	N/A NorthFace	Negligible	Low	Not Significant
556	40	10	0	27	8	0	39	7	0	44%	-13%	0%	Negligible	N/A NorthFace	N/A NorthFace	Negligible	Low	Not Significant
557	38.5	9	0	27	7.2	0	36	1	0	33%	-86%	0%	Negligible	N/A NorthFace	N/A NorthFace	Negligible	Low	Not Significant
558	38.5	9	0	27	7.2	0	36.5	1	0	35%	-86%	0%	Negligible	N/A NorthFace	N/A NorthFace	Negligible	Low	Not Significant
559	39	9	0	27	7.2	0	37.5	1	0	39%	-86%	0%	Negligible	N/A NorthFace	N/A NorthFace	Negligible	Low	Not Significant
560	38.5	9	0	27	7.2	0	37.5	1	0	39%	-86%	0%	Negligible	N/A NorthFace	N/A NorthFace	Negligible	Low	Not Significant
561	39	9	0	27	7.2	0	38	1	0	41%	-86%	0%	Negligible	N/A NorthFace	N/A NorthFace	Negligible	Low	Not Significant
562	39.5	9	0	27	7.2	0	38.5	1	0	43%	-86%	0%	Negligible	N/A NorthFace	N/A NorthFace	Negligible	Low	Not Significant
563	39.5	9	0	27	7.2	0	38.5	1	0	43%	-86%	0%	Negligible	N/A NorthFace	N/A NorthFace	Negligible	Low	Not Significant
564	39	10	0	27	8	0	38	2	0	41%	-75%	0%	Negligible	N/A NorthFace	N/A NorthFace	Negligible	Low	Not Significant
565	39	10	0	27	8	0	38	2	0	41%	-75%	0%	Negligible	N/A NorthFace	N/A NorthFace	Negligible	Low	Not Significant
566	39.5	10	0	27	8	0	38.5	2	0	43%	-75%	0%	Negligible	N/A NorthFace	N/A NorthFace	Negligible	Low	Not Significant
567	39	10	0	27	8	0	38	3	0	41%	-63%	0%	Negligible	N/A NorthFace	N/A NorthFace	Negligible	Low	Not Significant
568	39	10	0	27	8	0	38	4	0	41%	-50%	0%	Negligible	N/A NorthFace	N/A NorthFace	Negligible	Low	Not Significant
569	39.5	10	0	27	8	0	38.5	4	0	43%	-50%	0%	Negligible	N/A NorthFace	N/A NorthFace	Negligible	Low	Not Significant
570	39.5	10	0	27	8	0	38.5	4	0	43%	-50%	0%	Negligible	N/A NorthFace	N/A NorthFace	Negligible	Low	Not Significant
571	39	10	0	27	8	0	38	4	0	41%	-50%	0%	Negligible	N/A NorthFace	N/A NorthFace	Negligible	Low	Not Significant

Window Number	Existing Conditions			BRE recommended minimum target			Proposed Condition			% Deviation from Minimum Target			Predicted Impacts			Significance of Effects		
	VSC	APSH	APSH Winter (WPSH)	VSC BRE Minimum Target	APSH BRE Minimum Target	APSH Winter BRE Minimum Target	VSC	APSH	APSH Winter	VSC	APSH	APSH Winter (WPSH)	VSC Expected Impact	APSH Expected Impact	APSH Winter Expected Impact	Greatest Impact	Sensitivity	Greatest Significance
572	39	10	0	27	8	0	38	4	0	41%	-50%	0%	Negligible	N/A NorthFace	N/A NorthFace	Negligible	Low	Not Significant
573	39	10	0	27	8	0	38	4	0	41%	-50%	0%	Negligible	N/A NorthFace	N/A NorthFace	Negligible	Low	Not Significant
574	39	10	0	27	8	0	38	5	0	41%	-38%	0%	Negligible	N/A NorthFace	N/A NorthFace	Negligible	Low	Not Significant
575	39	10	0	27	8	0	38	5	0	41%	-38%	0%	Negligible	N/A NorthFace	N/A NorthFace	Negligible	Low	Not Significant
576	39	10	0	27	8	0	38	6	0	41%	-25%	0%	Negligible	N/A NorthFace	N/A NorthFace	Negligible	Low	Not Significant
577	39	10	0	27	8	0	38	6	0	41%	-25%	0%	Negligible	N/A NorthFace	N/A NorthFace	Negligible	Low	Not Significant
578	39.5	10	0	27	8	0	38.5	7	0	43%	-13%	0%	Negligible	N/A NorthFace	N/A NorthFace	Negligible	Low	Not Significant
579	39.5	10	0	27	8	0	38.5	7	0	43%	-13%	0%	Negligible	N/A NorthFace	N/A NorthFace	Negligible	Low	Not Significant
580	39.5	10	0	27	8	0	38.5	7	0	43%	-13%	0%	Negligible	N/A NorthFace	N/A NorthFace	Negligible	Low	Not Significant
581	37.5	8	0	27	6.4	0	35.5	1	0	31%	-84%	0%	Negligible	N/A NorthFace	N/A NorthFace	Negligible	Low	Not Significant
582	37.5	9	0	27	7.2	0	35.5	1	0	31%	-86%	0%	Negligible	N/A NorthFace	N/A NorthFace	Negligible	Low	Not Significant
583	37	9	0	27	7.2	0	35.5	1	0	31%	-86%	0%	Negligible	N/A NorthFace	N/A NorthFace	Negligible	Low	Not Significant
584	38	9	0	27	7.2	0	36.5	1	0	35%	-86%	0%	Negligible	N/A NorthFace	N/A NorthFace	Negligible	Low	Not Significant
585	37	9	0	27	7.2	0	36	1	0	33%	-86%	0%	Negligible	N/A NorthFace	N/A NorthFace	Negligible	Low	Not Significant
586	37	9	0	27	7.2	0	36	1	0	33%	-86%	0%	Negligible	N/A NorthFace	N/A NorthFace	Negligible	Low	Not Significant
587	38	9	0	27	7.2	0	36.5	1	0	35%	-86%	0%	Negligible	N/A NorthFace	N/A NorthFace	Negligible	Low	Not Significant
588	38.5	9	0	27	7.2	0	37	1	0	37%	-86%	0%	Negligible	N/A NorthFace	N/A NorthFace	Negligible	Low	Not Significant
589	38	9	0	27	7.2	0	36.5	1	0	35%	-86%	0%	Negligible	N/A NorthFace	N/A NorthFace	Negligible	Low	Not Significant
590	39	9	0	27	7.2	0	38	1	0	41%	-86%	0%	Negligible	N/A NorthFace	N/A NorthFace	Negligible	Low	Not Significant
591	38.5	9	0	27	7.2	0	37.5	1	0	39%	-86%	0%	Negligible	N/A NorthFace	N/A NorthFace	Negligible	Low	Not Significant
592	38	9	0	27	7.2	0	37	1	0	37%	-86%	0%	Negligible	N/A NorthFace	N/A NorthFace	Negligible	Low	Not Significant
593	38.5	10	0	27	8	0	37.5	2	0	39%	-75%	0%	Negligible	N/A NorthFace	N/A NorthFace	Negligible	Low	Not Significant
594	38.5	9	0	27	7.2	0	37.5	1	0	39%	-86%	0%	Negligible	N/A NorthFace	N/A NorthFace	Negligible	Low	Not Significant
595	39	9	0	27	7.2	0	38	3	0	41%	-58%	0%	Negligible	N/A NorthFace	N/A NorthFace	Negligible	Low	Not Significant
596	38.5	9	0	27	7.2	0	37.5	3	0	39%	-58%	0%	Negligible	N/A NorthFace	N/A NorthFace	Negligible	Low	Not Significant

Window Number	Existing Conditions			BRE recommended minimum target			Proposed Condition			% Deviation from Minimum Target			Predicted Impacts			Significance of Effects		
	VSC	APSH	APSH Winter (WPSH)	VSC BRE Minimum Target	APSH BRE Minimum Target	APSH Winter BRE Minimum Target	VSC	APSH	APSH Winter	VSC	APSH	APSH Winter (WPSH)	VSC Expected Impact	APSH Expected Impact	APSH Winter Expected Impact	Greatest Impact	Sensitivity	Greatest Significance
597	38.5	9	0	27	7.2	0	37.5	3	0	39%	-58%	0%	Negligible	N/A NorthFace	N/A NorthFace	Negligible	Low	Not Significant
598	39	9	0	27	7.2	0	38	3	0	41%	-58%	0%	Negligible	N/A NorthFace	N/A NorthFace	Negligible	Low	Not Significant
599	38.5	9	0	27	7.2	0	37.5	3	0	39%	-58%	0%	Negligible	N/A NorthFace	N/A NorthFace	Negligible	Low	Not Significant
600	38.5	9	0	27	7.2	0	37.5	4	0	39%	-44%	0%	Negligible	N/A NorthFace	N/A NorthFace	Negligible	Low	Not Significant
601	38.5	9	0	27	7.2	0	37.5	5	0	39%	-31%	0%	Negligible	N/A NorthFace	N/A NorthFace	Negligible	Low	Not Significant
602	38	9	0	27	7.2	0	37	6	0	37%	-17%	0%	Negligible	N/A NorthFace	N/A NorthFace	Negligible	Low	Not Significant
603	37.5	9	0	27	7.2	0	36.5	6	0	35%	-17%	0%	Negligible	N/A NorthFace	N/A NorthFace	Negligible	Low	Not Significant
604	37.5	9	0	27	7.2	0	36.5	6	0	35%	-17%	0%	Negligible	N/A NorthFace	N/A NorthFace	Negligible	Low	Not Significant
605	34	6	0	27	4.8	0	32	1	0	19%	-79%	0%	Negligible	N/A NorthFace	N/A NorthFace	Negligible	Low	Not Significant
606	34	6	0	27	4.8	0	32	1	0	19%	-79%	0%	Negligible	N/A NorthFace	N/A NorthFace	Negligible	Low	Not Significant
607	34.5	8	0	27	6.4	0	33	1	0	22%	-84%	0%	Negligible	N/A NorthFace	N/A NorthFace	Negligible	Low	Not Significant
608	35	7	0	27	5.6	0	33.5	0	0	24%	-100%	0%	Negligible	N/A NorthFace	N/A NorthFace	Negligible	Low	Not Significant
609	35	7	0	27	5.6	0	33.5	0	0	24%	-100%	0%	Negligible	N/A NorthFace	N/A NorthFace	Negligible	Low	Not Significant
610	35.5	7	0	27	5.6	0	34.5	0	0	28%	-100%	0%	Negligible	N/A NorthFace	N/A NorthFace	Negligible	Low	Not Significant
611	35.5	7	0	27	5.6	0	34.5	0	0	28%	-100%	0%	Negligible	N/A NorthFace	N/A NorthFace	Negligible	Low	Not Significant
612	36	7	0	27	5.6	0	35	0	0	30%	-100%	0%	Negligible	N/A NorthFace	N/A NorthFace	Negligible	Low	Not Significant
613	36	7	0	27	5.6	0	35	0	0	30%	-100%	0%	Negligible	N/A NorthFace	N/A NorthFace	Negligible	Low	Not Significant
614	37	7	0	27	5.6	0	36	0	0	33%	-100%	0%	Negligible	N/A NorthFace	N/A NorthFace	Negligible	Low	Not Significant
615	37	8	0	27	6.4	0	36	0	0	33%	-100%	0%	Negligible	N/A NorthFace	N/A NorthFace	Negligible	Low	Not Significant
616	36.5	8	0	27	6.4	0	36	0	0	33%	-100%	0%	Negligible	N/A NorthFace	N/A NorthFace	Negligible	Low	Not Significant
617	36.5	8	0	27	6.4	0	36	0	0	33%	-100%	0%	Negligible	N/A NorthFace	N/A NorthFace	Negligible	Low	Not Significant
618	36.5	8	0	27	6.4	0	36	0	0	33%	-100%	0%	Negligible	N/A NorthFace	N/A NorthFace	Negligible	Low	Not Significant
619	36.5	8	0	27	6.4	0	36	0	0	33%	-100%	0%	Negligible	N/A NorthFace	N/A NorthFace	Negligible	Low	Not Significant
620	36.5	8	0	27	6.4	0	36	0	0	33%	-100%	0%	Negligible	N/A NorthFace	N/A NorthFace	Negligible	Low	Not Significant
621	37	8	0	27	6.4	0	36.5	0	0	35%	-100%	0%	Negligible	N/A NorthFace	N/A NorthFace	Negligible	Low	Not Significant

Window Number	Existing Conditions			BRE recommended minimum target			Proposed Condition			% Deviation from Minimum Target			Predicted Impacts			Significance of Effects		
	VSC	APSH	APSH Winter (WPSH)	VSC BRE Minimum Target	APSH BRE Minimum Target	APSH Winter BRE Minimum Target	VSC	APSH	APSH Winter	VSC	APSH	APSH Winter (WPSH)	VSC Expected Impact	APSH Expected Impact	APSH Winter Expected Impact	Greatest Impact	Sensitivity	Greatest Significance
622	37	8	0	27	6.4	0	36.5	1	0	35%	-84%	0%	Negligible	N/A NorthFace	N/A NorthFace	Negligible	Low	Not Significant
623	37	8	0	27	6.4	0	36.5	2	0	35%	-69%	0%	Negligible	N/A NorthFace	N/A NorthFace	Negligible	Low	Not Significant
624	37.5	8	0	27	6.4	0	36.5	3	0	35%	-53%	0%	Negligible	N/A NorthFace	N/A NorthFace	Negligible	Low	Not Significant
625	37.5	9	0	27	7.2	0	36.5	4	0	35%	-44%	0%	Negligible	N/A NorthFace	N/A NorthFace	Negligible	Low	Not Significant
626	37.5	8	0	27	6.4	0	36.5	4	0	35%	-38%	0%	Negligible	N/A NorthFace	N/A NorthFace	Negligible	Low	Not Significant
627	37	8	0	27	6.4	0	36	4	0	33%	-38%	0%	Negligible	N/A NorthFace	N/A NorthFace	Negligible	Low	Not Significant
628	36	8	0	27	6.4	0	35	4	0	30%	-38%	0%	Negligible	N/A NorthFace	N/A NorthFace	Negligible	Low	Not Significant
629	29.5	4	0	23.6	3.2	0	28.5	1	0	21%	-69%	0%	Negligible	N/A NorthFace	N/A NorthFace	Negligible	Low	Not Significant
630	32.5	5	0	26	4	0	31.5	0	0	21%	-100%	0%	Negligible	N/A NorthFace	N/A NorthFace	Negligible	Low	Not Significant
631	34.5	6	0	27	4.8	0	33.5	0	0	24%	-100%	0%	Negligible	N/A NorthFace	N/A NorthFace	Negligible	Low	Not Significant
632	35.5	7	0	27	5.6	0	34.5	0	0	28%	-100%	0%	Negligible	N/A NorthFace	N/A NorthFace	Negligible	Low	Not Significant
633	35.5	7	0	27	5.6	0	35	0	0	30%	-100%	0%	Negligible	N/A NorthFace	N/A NorthFace	Negligible	Low	Not Significant
634	35.5	7	0	27	5.6	0	35	3	0	30%	-46%	0%	Negligible	N/A NorthFace	N/A NorthFace	Negligible	Low	Not Significant
B28 Hunt Museum, Rutland Street																		
635	20.5	54	12	16.4	25	5	20.5	54	12	25%	116%	140%	Negligible	Negligible	Negligible	Negligible	Low	Not Significant
636	23.5	60	15	18.8	25	5	23.5	61	16	25%	144%	220%	Negligible	Negligible	Negligible	Negligible	Low	Not Significant
637	27	66	18	21.6	25	5	27.5	65	17	27%	160%	240%	Negligible	Negligible	Negligible	Negligible	Low	Not Significant
638	27.5	38	9	22	25	5	23.5	31	9	7%	24%	80%	Negligible	Negligible	Negligible	Negligible	Low	Not Significant
639	27.5	37	8	22	25	5	23	29	8	5%	16%	60%	Negligible	Negligible	Negligible	Negligible	Low	Not Significant
640	27.5	38	9	22	25	5	23.5	30	10	7%	20%	100%	Negligible	Negligible	Negligible	Negligible	Low	Not Significant
641	27.5	38	9	22	25	5	23	29	10	5%	16%	100%	Negligible	Negligible	Negligible	Negligible	Low	Not Significant
642	28	39	9	22.4	25	5	23	29	10	3%	16%	100%	Negligible	Negligible	Negligible	Negligible	Low	Not Significant
643	24	32	7	19.2	25	5	20.5	27	7	7%	8%	40%	Negligible	Negligible	Negligible	Negligible	Low	Not Significant
644	24.5	33	7	19.6	25	5	20	26	7	2%	4%	40%	Negligible	Negligible	Negligible	Negligible	Low	Not Significant
645	24.5	33	7	19.6	25	5	20.5	26	7	5%	4%	40%	Negligible	Negligible	Negligible	Negligible	Low	Not Significant
646	24.5	34	7	19.6	25	5	20.5	25	7	5%	0%	40%	Negligible	Negligible	Negligible	Negligible	Low	Not Significant
647	25	34	7	20	25	5	20.5	26	7	3%	4%	40%	Negligible	Negligible	Negligible	Negligible	Low	Not Significant
648	29	4	0	23.2	3.2	0	29	1	0	25%	-69%	0%	Negligible	N/A NorthFace	N/A NorthFace	Negligible	Low	Not Significant
649	32.5	5	0	26	4	0	32.5	2	0	25%	-50%	0%	Negligible	N/A NorthFace	N/A NorthFace	Negligible	Low	Not Significant
650	34.5	51	14	27	25	5	29.5	38	13	9%	52%	160%	Negligible	Negligible	Negligible	Negligible	Low	Not Significant
651	34.5	51	14	27	25	5	29	39	13	7%	56%	160%	Negligible	Negligible	Negligible	Negligible	Low	Not Significant

Window Number	Existing Conditions			BRE recommended minimum target			Proposed Condition			% Deviation from Minimum Target			Predicted Impacts			Significance of Effects		
	VSC	APSH	APSH Winter (WPSH)	VSC BRE Minimum Target	APSH BRE Minimum Target	APSH Winter BRE Minimum Target	VSC	APSH	APSH Winter	VSC	APSH	APSH Winter (WPSH)	VSC Expected Impact	APSH Expected Impact	APSH Winter Expected Impact	Greatest Impact	Sensitivity	Greatest Significance
652	35.5	51	14	27	25	5	30.5	39	13	13%	56%	160%	Negligible	Negligible	Negligible	Negligible	Low	Not Significant
653	35.5	51	14	27	25	5	31	41	13	15%	64%	160%	Negligible	Negligible	Negligible	Negligible	Low	Not Significant
654	35.5	51	14	27	25	5	30	42	12	11%	68%	140%	Negligible	Negligible	Negligible	Negligible	Low	Not Significant
655	36.5	51	14	27	25	5	32	43	12	19%	72%	140%	Negligible	Negligible	Negligible	Negligible	Low	Not Significant
656	37	51	14	27	25	5	32.5	43	12	20%	72%	140%	Negligible	Negligible	Negligible	Negligible	Low	Not Significant
657	27.5	30	0	22	24	0	22.5	19	0	2%	-21%	0%	Negligible	High	Negligible	Medium	High	Very Significant/Significant
658	31	42	7	24.8	25	5	26	32	7	5%	28%	40%	Negligible	Negligible	Negligible	Negligible	High	Not Significant
659	33	46	10	26.4	25	5	28.5	36	10	8%	44%	100%	Negligible	Negligible	Negligible	Negligible	High	Not Significant
660	34	49	13	27	25	5	30	40	13	11%	60%	160%	Negligible	Negligible	Negligible	Negligible	High	Not Significant
661	34.5	49	13	27	25	5	29.5	41	12	9%	64%	140%	Negligible	Negligible	Negligible	Negligible	High	Not Significant
662	35.5	49	13	27	25	5	31.5	43	12	17%	72%	140%	Negligible	Negligible	Negligible	Negligible	High	Not Significant
663	35	49	13	27	25	5	31	43	12	15%	72%	140%	Negligible	Negligible	Negligible	Negligible	High	Not Significant
664	19	10	0	15.2	8	0	16.5	1	0	9%	-88%	0%	Negligible	High	Negligible	Medium	High	Very Significant/Significant
665	24	26	0	19.2	20.8	0	20	17	0	4%	-18%	0%	Negligible	Medium	Negligible	Medium	High	Very Significant/Significant
666	27.5	35	1	22	25	0.8	24	25	1	9%	0%	25%	Negligible	Negligible	Negligible	Negligible	High	Not Significant
667	28.5	39	5	22.8	25	4	25.5	30	5	12%	20%	25%	Negligible	Negligible	Negligible	Negligible	High	Not Significant
668	29.5	42	8	23.6	25	5	26	34	7	10%	36%	40%	Negligible	Negligible	Negligible	Negligible	High	Not Significant
669	29.5	43	8	23.6	25	5	26.5	34	7	12%	36%	40%	Negligible	Negligible	Negligible	Negligible	High	Not Significant
670	31	44	8	24.8	25	5	27.5	35	7	11%	40%	40%	Negligible	Negligible	Negligible	Negligible	High	Not Significant
671	23	19	0	18.4	15.2	0	20.5	15	0	11%	-1%	0%	Negligible	Low	Negligible	Low	Low	Minor
672	26.5	36	5	21.2	25	4	22.5	29	2	6%	16%	-50%	Negligible	Negligible	High	High	Low	Moderate/Slight
673	15.5	34	8	12.4	25	5	12	26	4	-3%	4%	-20%	Low	Negligible	Medium	Medium	Low	Moderate/Slight
B29 Rutland House, Rutland Street																		
674	27	36	12	21.6	25	5	23.5	28	7	9%	12%	40%	Negligible	Negligible	Negligible	Negligible	Negligible	Imperceptible
675	27.5	35	8	22	25	5	25.5	32	7	16%	28%	40%	Negligible	Negligible	Negligible	Negligible	Negligible	Imperceptible
676	33	45	9	26.4	25	5	30.5	40	6	16%	60%	20%	Negligible	Negligible	Negligible	Negligible	Negligible	Imperceptible
677	35	77	25	27	25	5	31.5	67	19	17%	168%	280%	Negligible	Negligible	Negligible	Negligible	High	Not Significant
678	34.5	76	24	27	25	5	30	65	18	11%	160%	260%	Negligible	Negligible	Negligible	Negligible	High	Not Significant
679	32	75	23	25.6	25	5	28	66	19	9%	164%	280%	Negligible	Negligible	Negligible	Negligible	High	Not Significant
680	32.5	75	23	26	25	5	28.5	64	18	10%	156%	260%	Negligible	Negligible	Negligible	Negligible	High	Not Significant
681	37.5	50	13	27	25	5	32	38	7	19%	52%	40%	Negligible	Negligible	Negligible	Negligible	High	Not Significant
682	38.5	50	13	27	25	5	33	40	7	22%	60%	40%	Negligible	Negligible	Negligible	Negligible	Low	Not Significant
683	38	51	14	27	25	5	33	41	8	22%	64%	60%	Negligible	Negligible	Negligible	Negligible	High	Not Significant
684	36.5	48	11	27	25	5	32	37	6	19%	48%	20%	Negligible	Negligible	Negligible	Negligible	High	Not Significant
685	37	50	13	27	25	5	33	41	8	22%	64%	60%	Negligible	Negligible	Negligible	Negligible	High	Not Significant
B2 7, Bank Place																		
686	21.5	38	13	17.2	25	5	17	24	10	-1%	-4%	100%	Low	Low	Negligible	Low	High	Significant/Moderate
687	17	24	10	13.6	19.2	5	13	20	8	-4%	4%	60%	Low	Negligible	Negligible	Low	High	Significant/Moderate

Window Number	Existing Conditions			BRE recommended minimum target			Proposed Condition			% Deviation from Minimum Target			Predicted Impacts			Significance of Effects		
	VSC	APSH	APSH Winter (WPSH)	VSC BRE Minimum Target	APSH BRE Minimum Target	APSH Winter BRE Minimum Target	VSC	APSH	APSH Winter	VSC	APSH	APSH Winter (WPSH)	VSC Expected Impact	APSH Expected Impact	APSH Winter Expected Impact	Greatest Impact	Sensitivity	Greatest Significance
688	14	21	10	11.2	16.8	5	10.5	17	6	-6%	1%	20%	Low	Negligible	Negligible	Low	High	Significant/Moderate
B30 Rutland House Apartments, Rutland Street																		
689	35	44	9	27	25	5	11	12	3	-59%	-52%	-40%	High	High	High	High	High	Profound
690	22.5	27	4	18	21.6	3.2	2.5	0	0	-86%	-100%	-100%	High	High	High	High	High	Profound
691	13	16	3	10.4	12.8	2.4	1	0	0	-90%	-100%	-100%	High	High	High	High	High	Profound
692	8	10	2	6.4	8	1.6	0.5	0	0	-92%	-100%	-100%	High	High	High	High	Low	Moderate/Slight
693	39.5	50	15	27	25	5	10.5	16	9	-61%	-36%	80%	High	High	Negligible	High	High	Profound
694	30	43	15	24	25	5	7.5	14	8	-69%	-44%	60%	High	High	Negligible	High	High	Profound
695	21	39	15	16.8	25	5	4.5	12	6	-73%	-52%	20%	High	High	Negligible	High	High	Profound
696	39.5	59	20	27	25	5	11	25	14	-59%	0%	180%	High	Negligible	Negligible	High	High	Profound
697	34	54	20	27	25	5	8.5	25	13	-69%	0%	160%	High	Negligible	Negligible	High	High	Profound
698	31.5	54	19	25.2	25	5	8	22	9	-68%	-12%	80%	High	Medium	Negligible	High	High	Profound
699	40	55	18	27	25	5	12	22	12	-56%	-12%	140%	High	Medium	Negligible	High	High	Profound
700	39	54	18	27	25	5	10	21	11	-63%	-16%	120%	High	Medium	Negligible	High	High	Profound
701	34	54	18	27	25	5	8	18	8	-70%	-28%	60%	High	High	Negligible	High	High	Profound
702	29.5	53	17	23.6	25	5	6	14	4	-75%	-44%	-20%	High	High	Medium	High	High	Profound
703	40	55	18	27	25	5	11.5	24	13	-57%	-4%	160%	High	Low	Negligible	High	High	Profound
704	39	54	18	27	25	5	10.5	23	12	-61%	-8%	140%	High	Low	Negligible	High	High	Profound
705	35.5	53	17	27	25	5	8.5	20	9	-69%	-20%	80%	High	Medium	Negligible	High	High	Profound
706	32	52	16	25.6	25	5	7	16	5	-73%	-36%	0%	High	High	Negligible	High	High	Profound
707	24.5	42	11	19.6	25	5	2.5	10	1	-87%	-60%	-80%	High	High	High	High	High	Profound
B2 7, Bank Place																		
708	25	56	20	20	25	5	15.5	28	7	-23%	12%	40%	High	Negligible	Negligible	High	High	Profound

3. Sunlight Amenity Shadowing

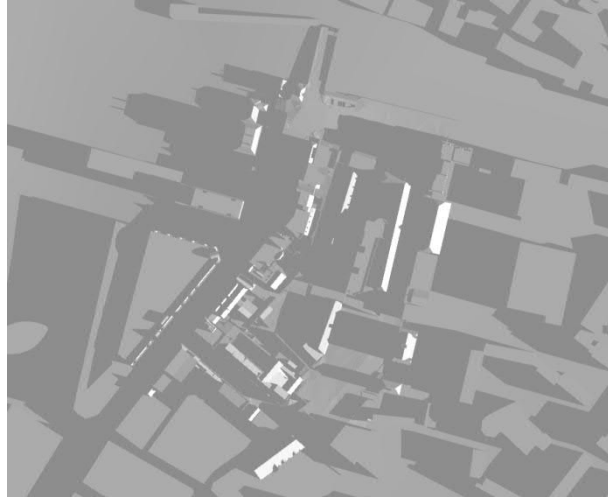
The following figures, Figure A.1 – Figure A.13, provide an overview of window locations for assessment buildings. These figures cross reference to Appendix A, Section 2 Tables which provide a detailed overview of the predicted sunlight, daylight and shadowing performance for baseline and proposed conditions.

Figure A.14 (a – l) – Sunlight Amenity Areas A1 – A4, 21 March, Existing Conditions

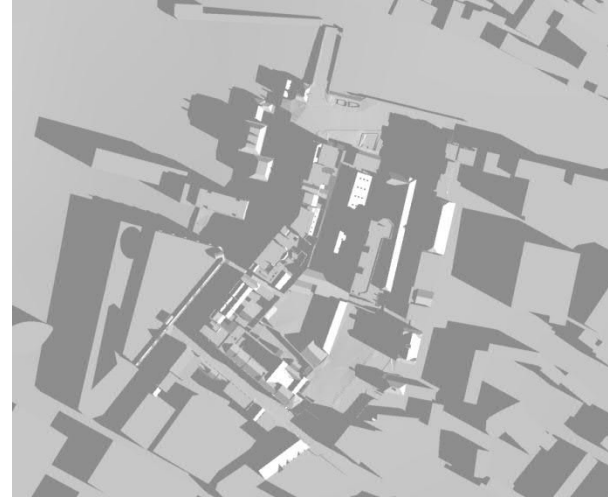
a. 06.00



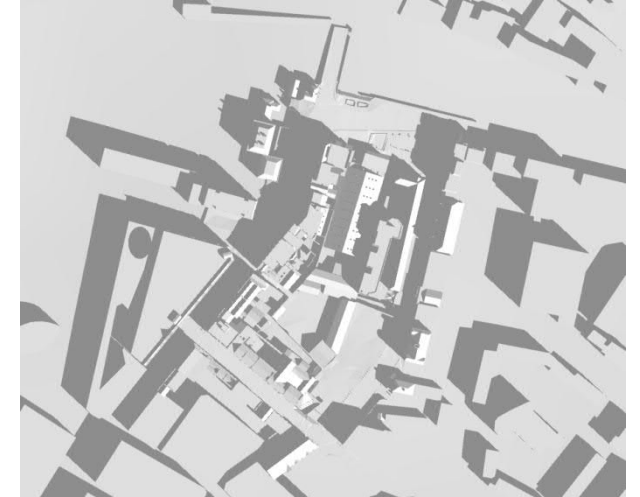
b. 07.00



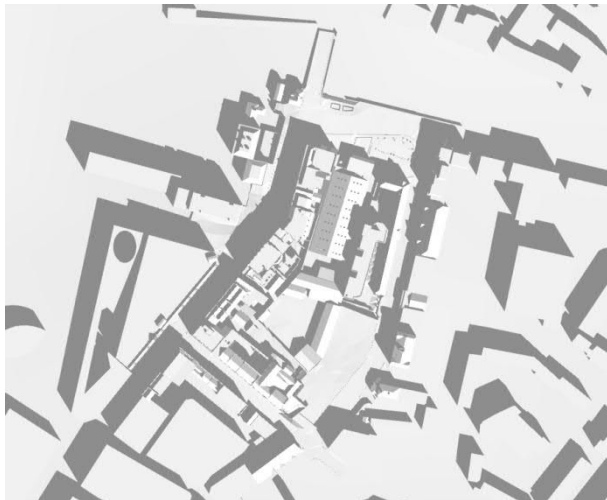
c. 08.00



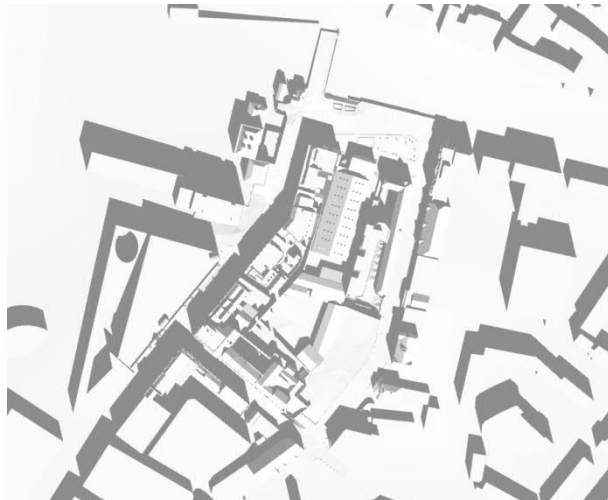
d. 09.00



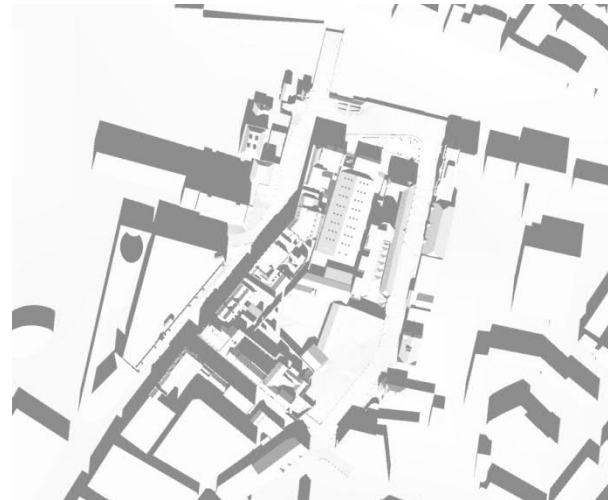
e. 10.00



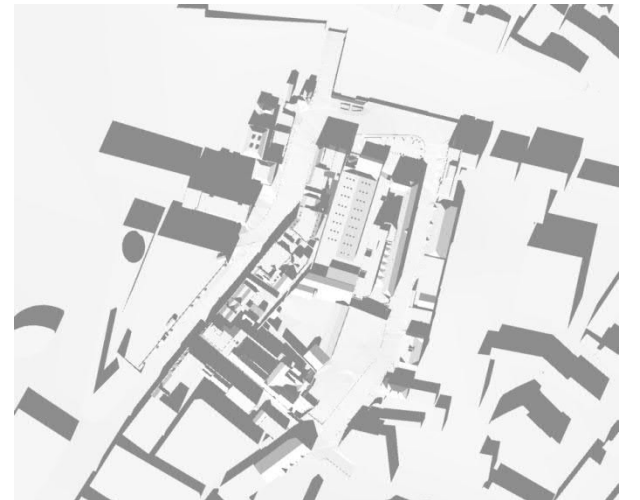
f. 11.00



g. 12.00



h. 13.00



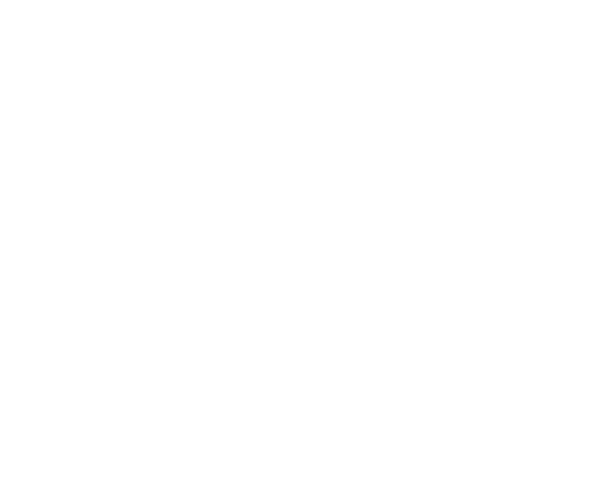
i. 14.00



j. 15.00



k. 16.00



l. 17.00



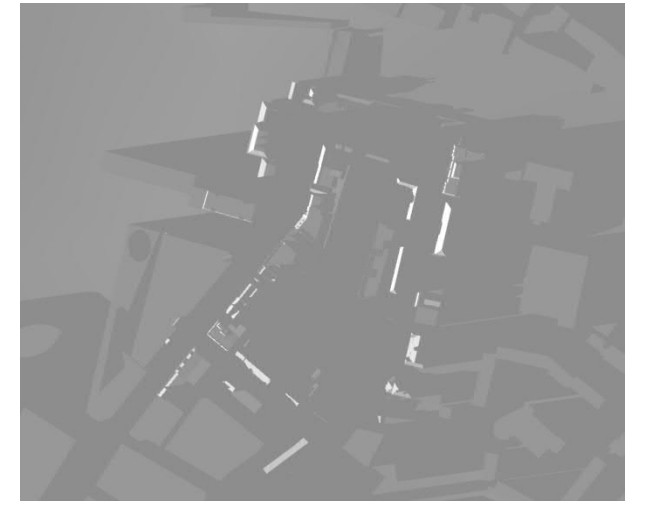
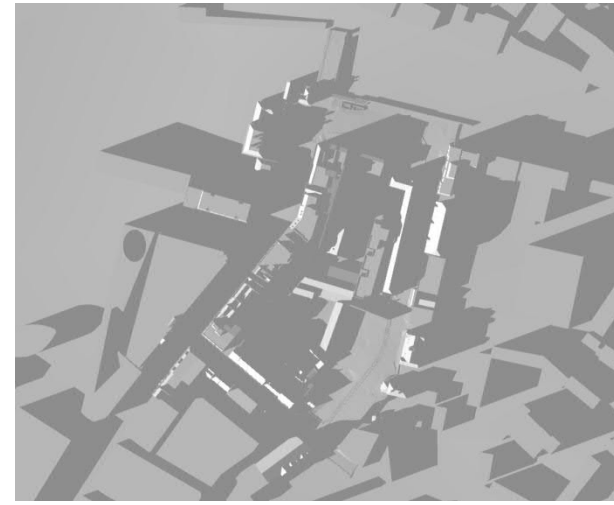
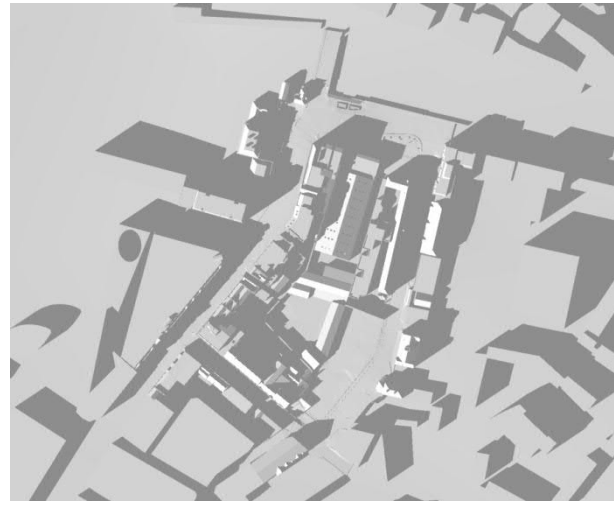
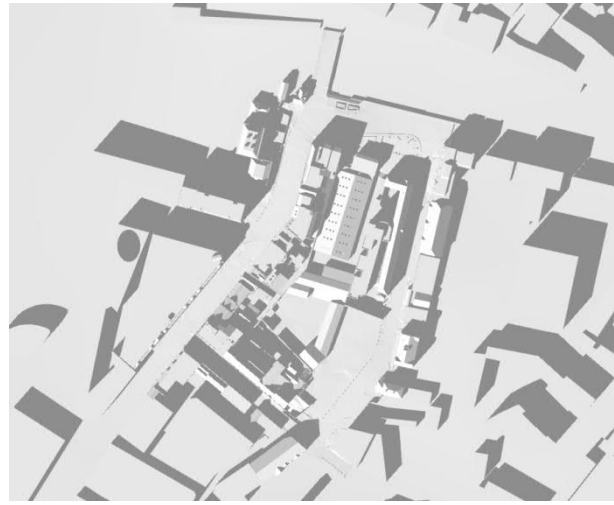
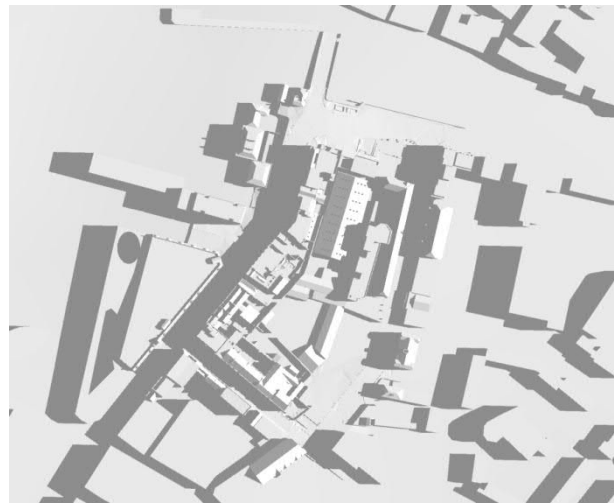
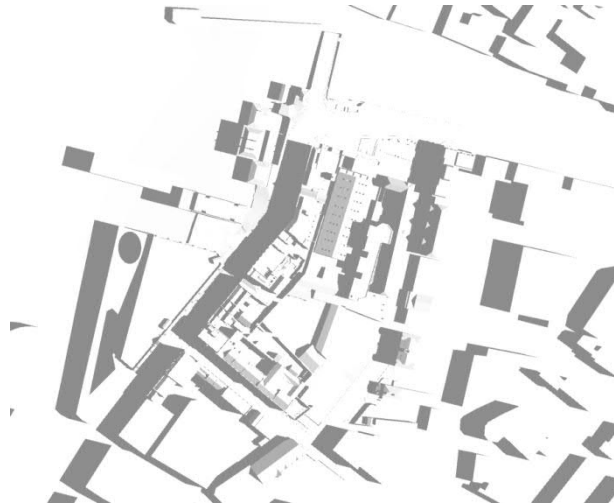


Figure A.15 (a – l) – Sunlight Amenity Areas A1 – A4, 21 June, Existing Conditions

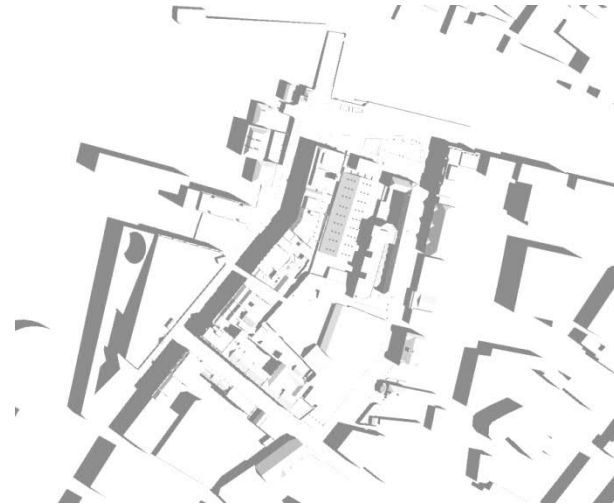
a. 06.00



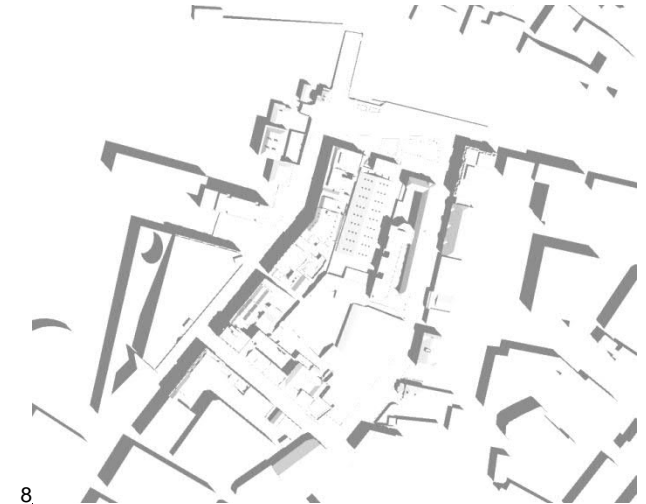
b. 07.00



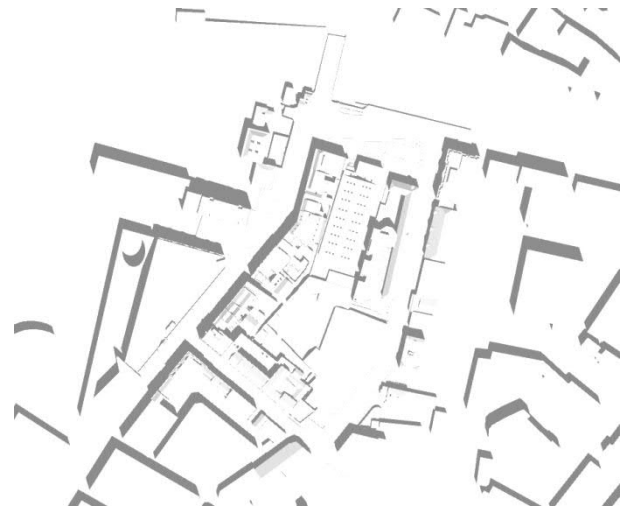
c. 08.00



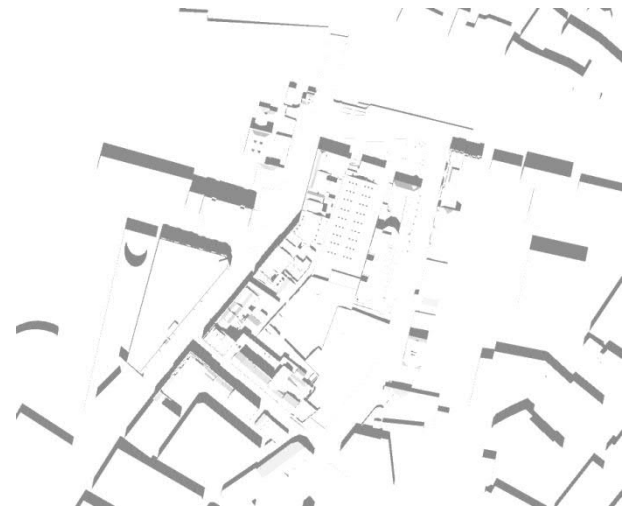
d. 09.00



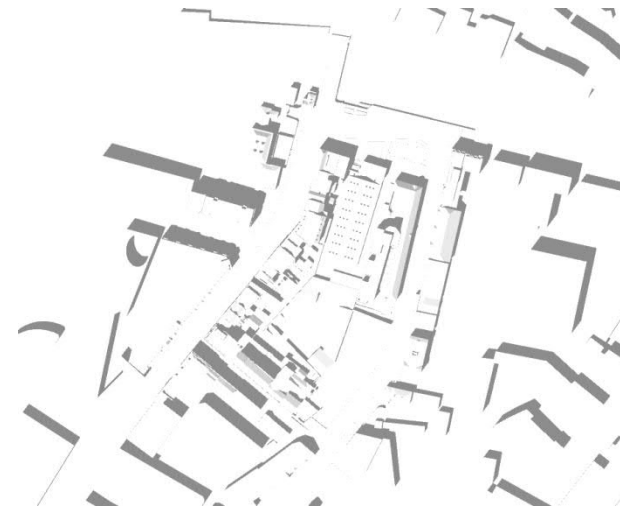
e. 10.00



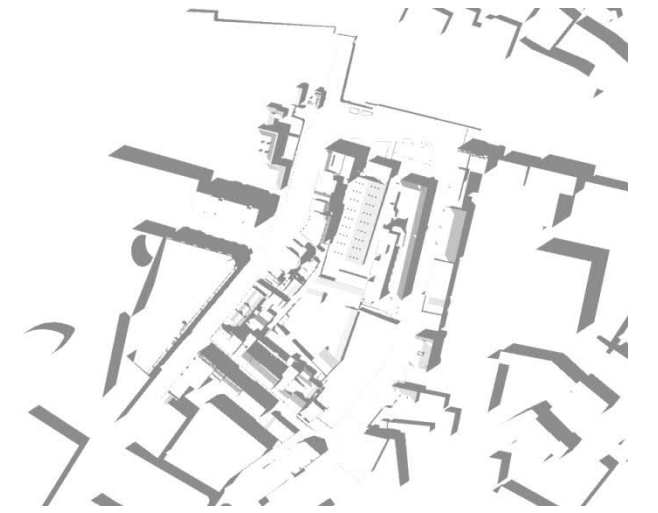
f. 11.00



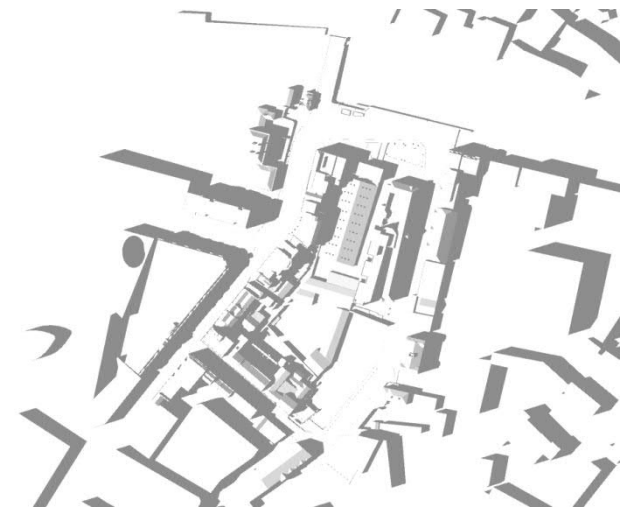
g. 12.00



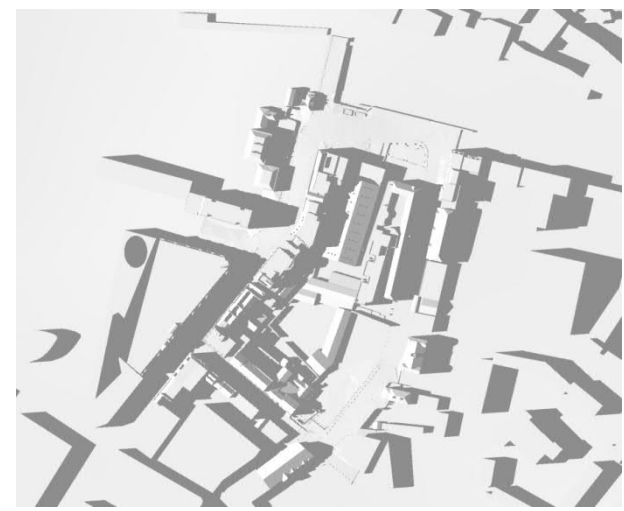
h. 13.00



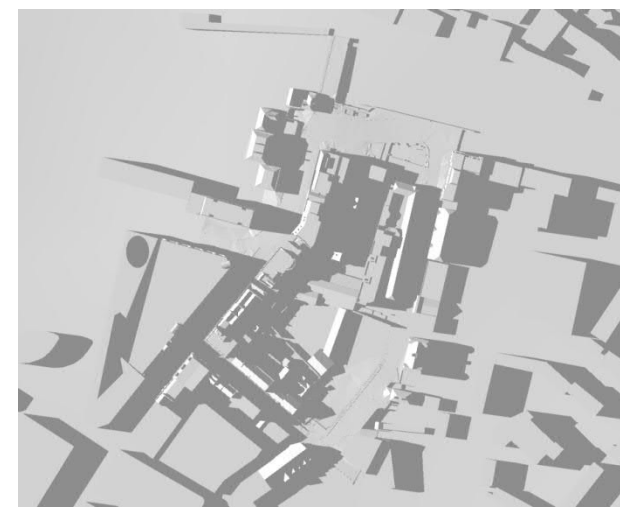
i. 14.00



j. 15.00



k. 16.00



l. 17.00

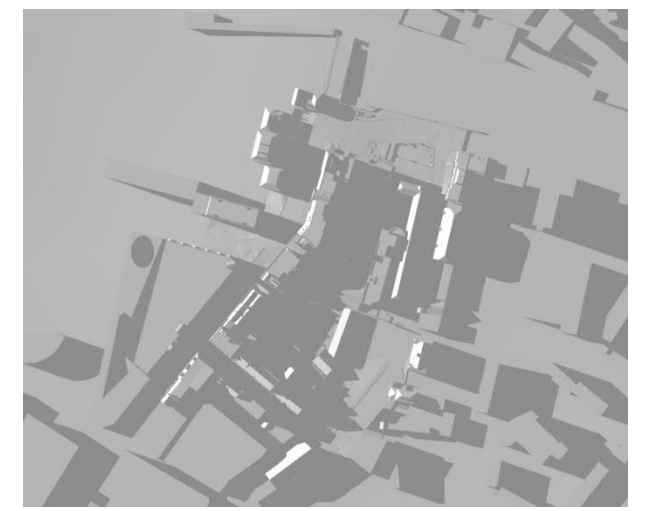


Figure A.16 (a – l) – Sunlight Amenity Areas A1 – A4, 21 December, Existing Conditions

a. 06.00



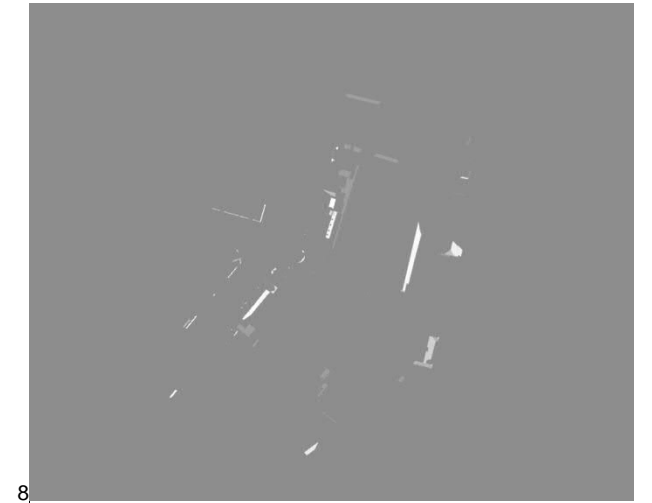
b. 07.00



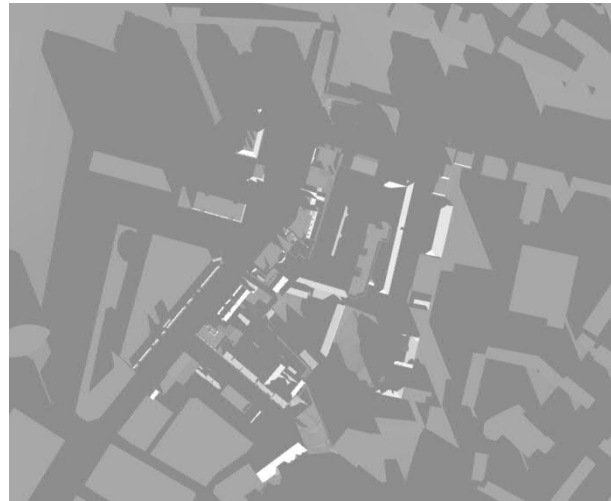
c. 08.00



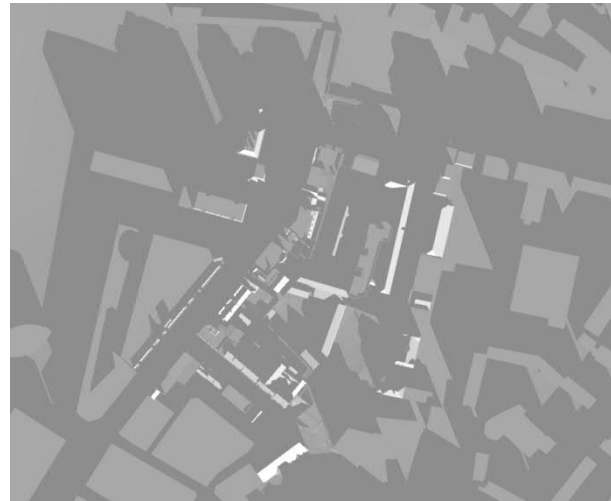
d. 09.00



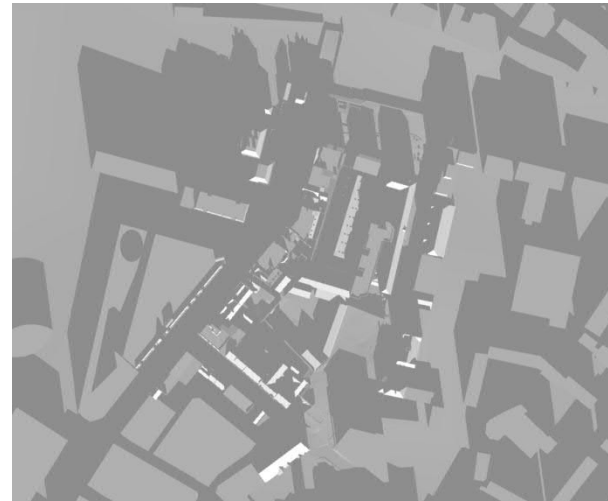
e. 10.00



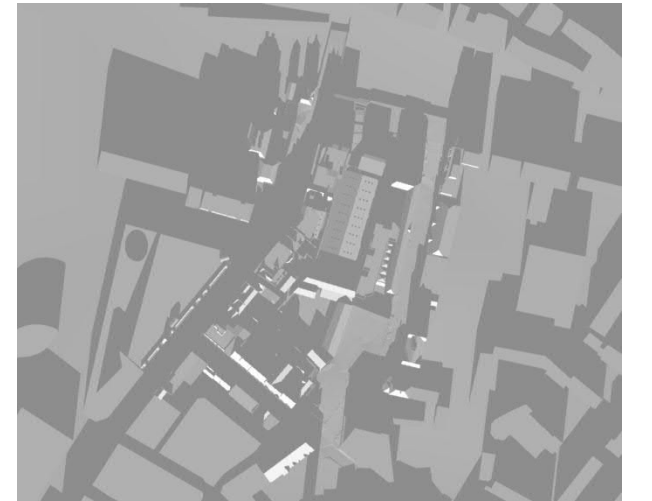
f. 11.00



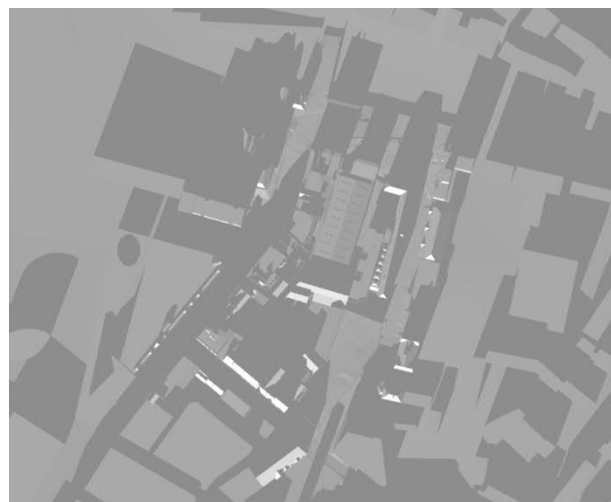
g. 12.00



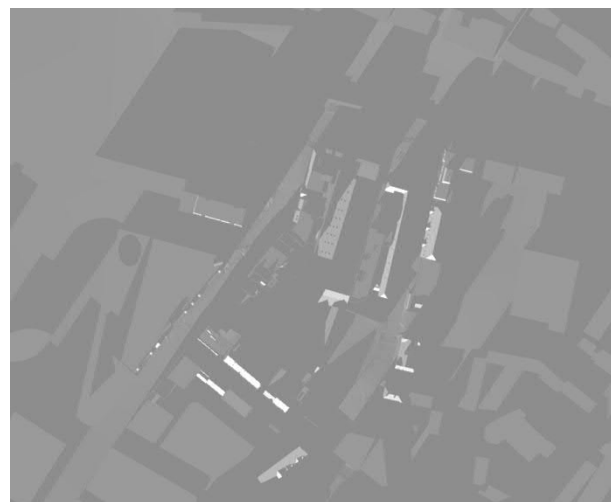
h. 13.00



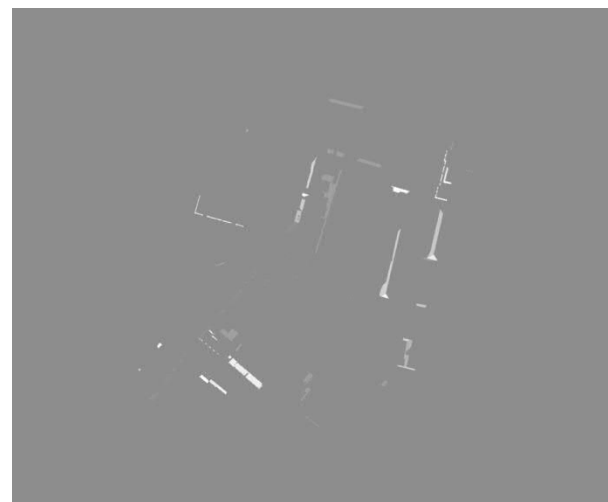
i. 14.00



j. 15.00



k. 16.00



l. 17.00

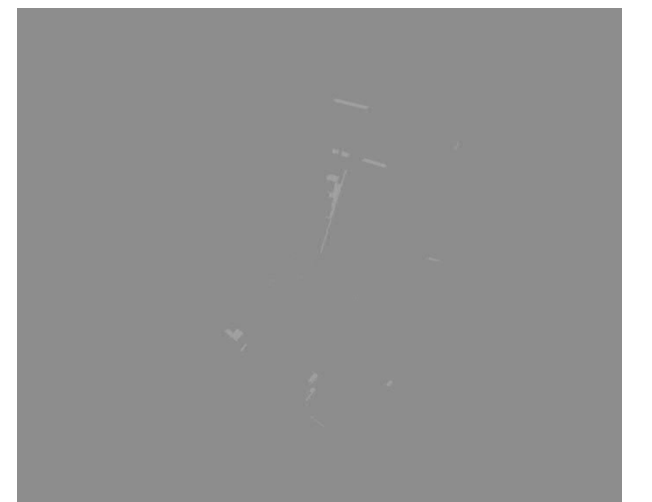
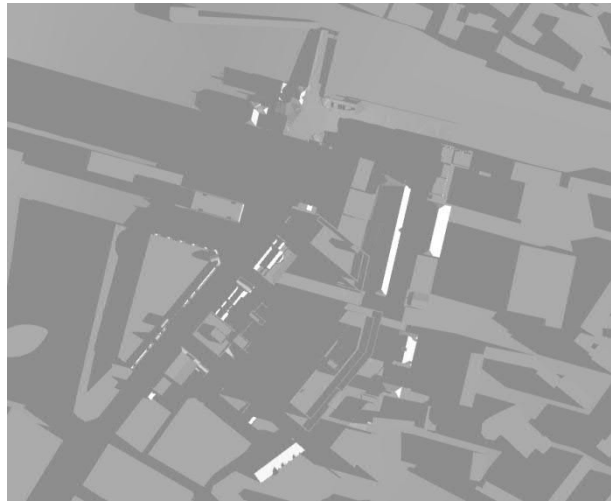


Figure A.17 (a – l) – Sunlight Amenity Areas A1 – A4, 21 March, Proposed Conditions

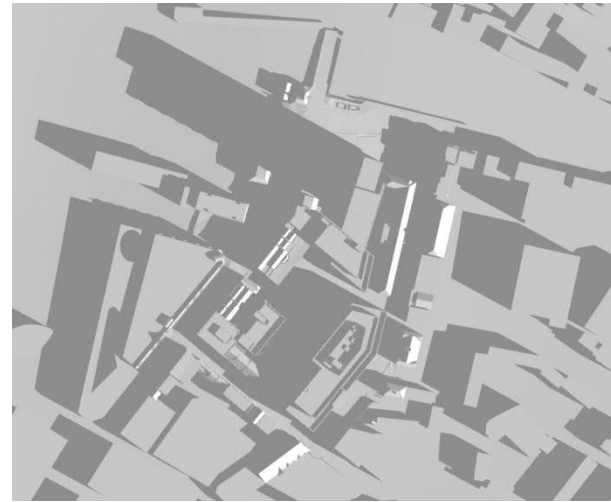
a. 06.00



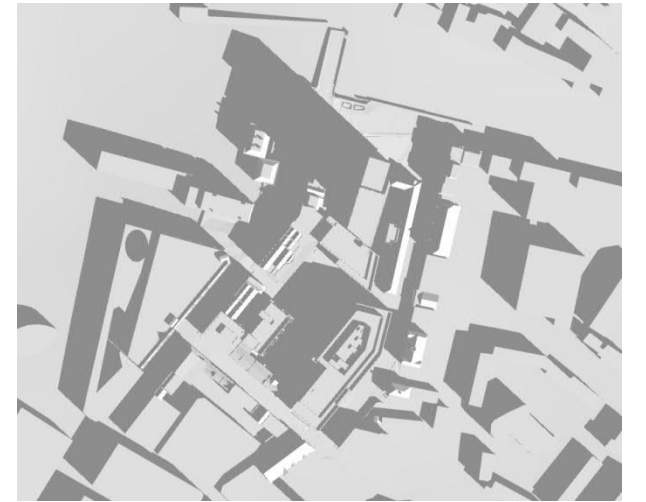
b. 07.00



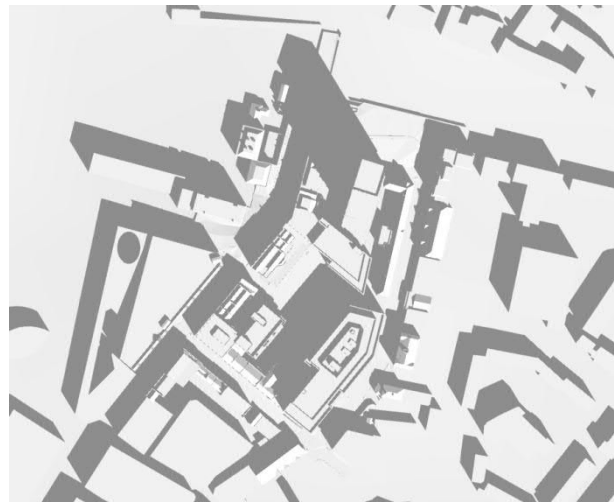
c. 08.00



d. 09.00



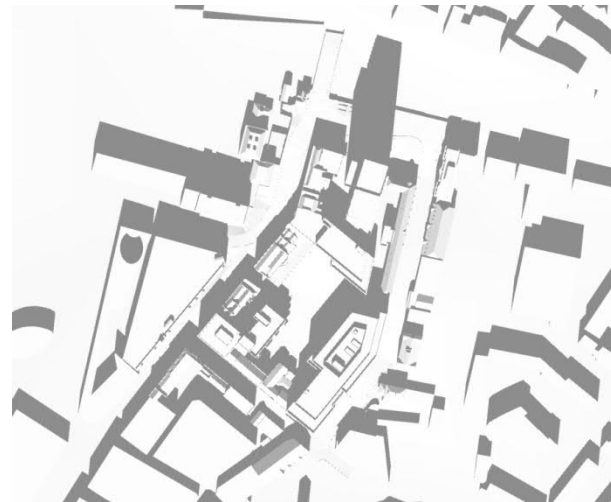
e. 10.00



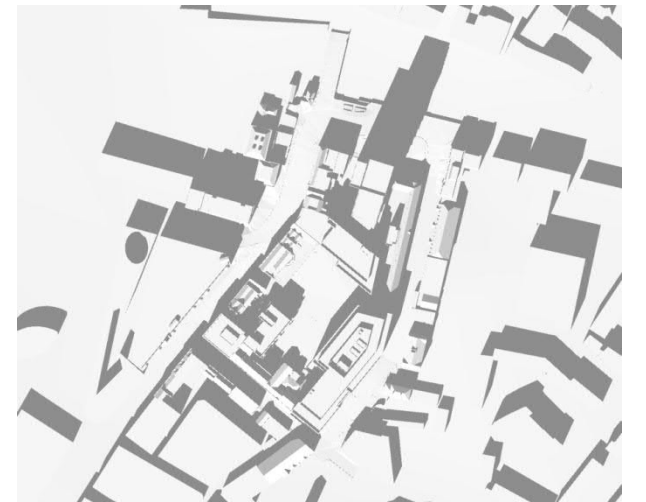
f. 11.00



g. 12.00



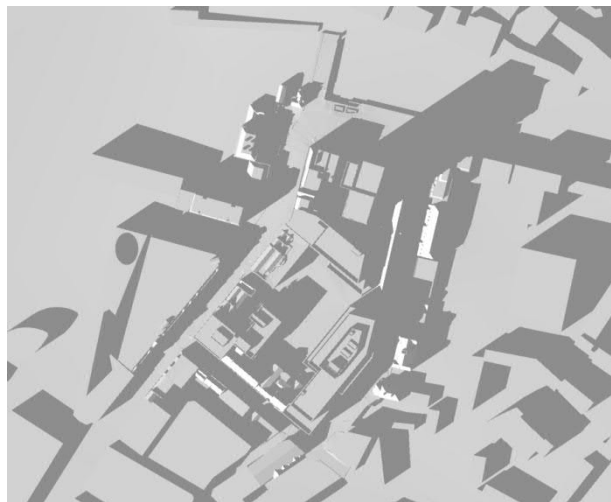
h. 13.00



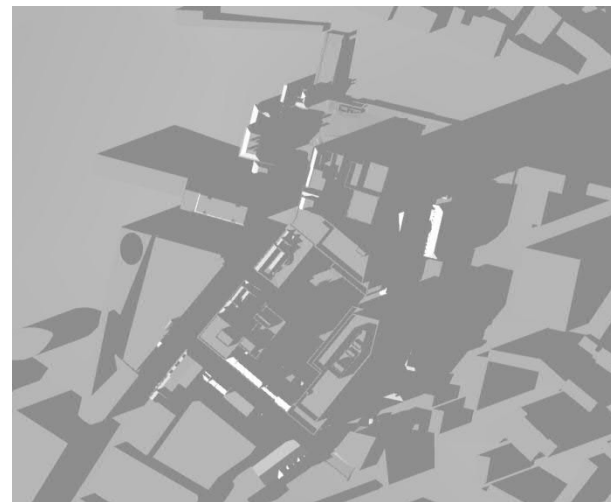
i. 14.00



j. 15.00



k. 16.00



l. 17.00

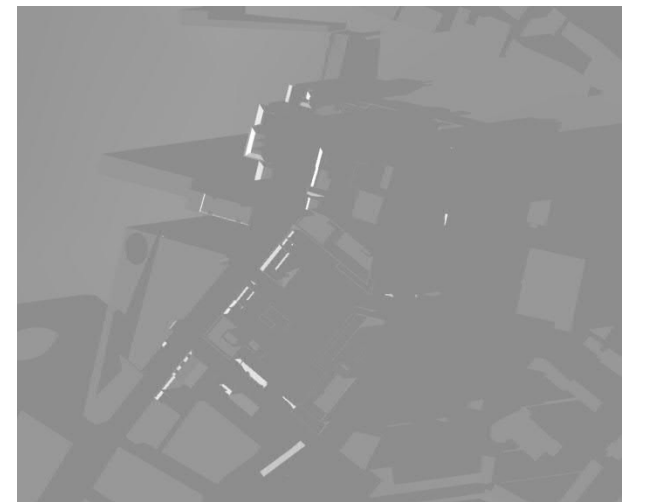
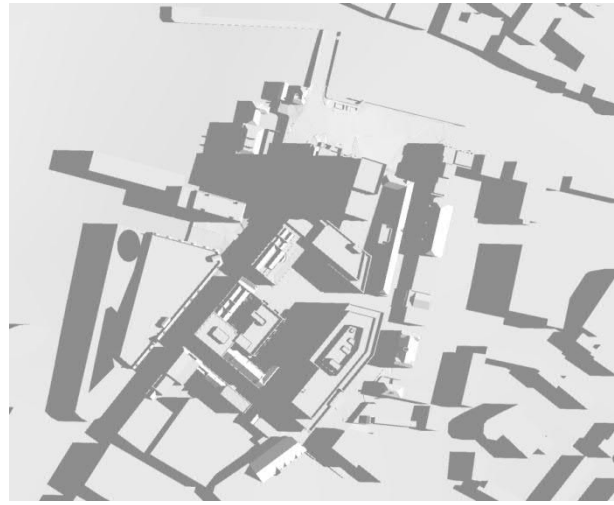
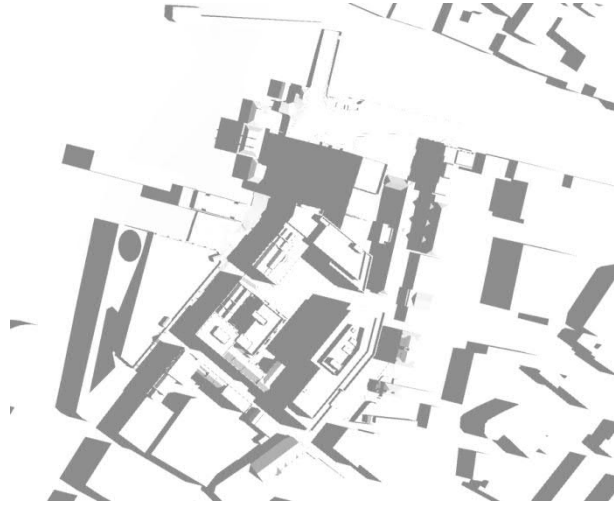


Figure A.18 (a – l) – Sunlight Amenity Areas A1 – A4, 21 June, Proposed Conditions

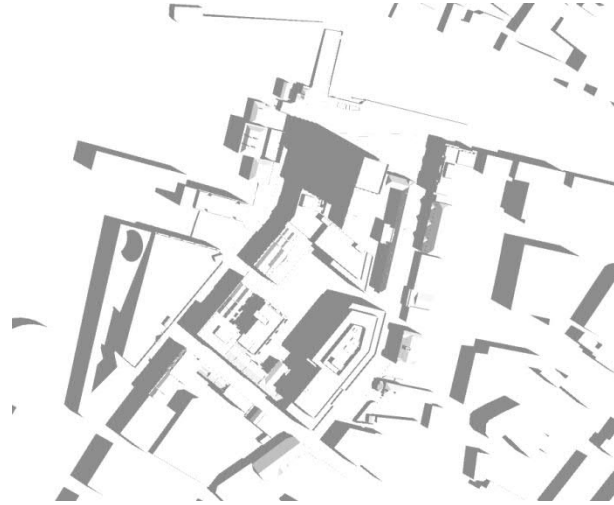
a. 06.00



b. 07.00



c. 08.00



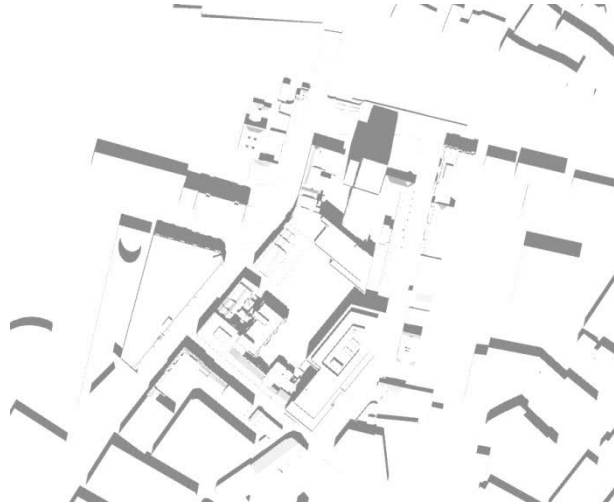
d. 09.00



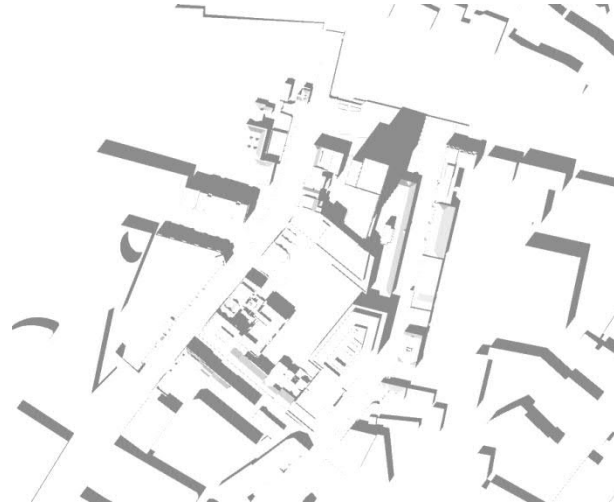
e. 10.00



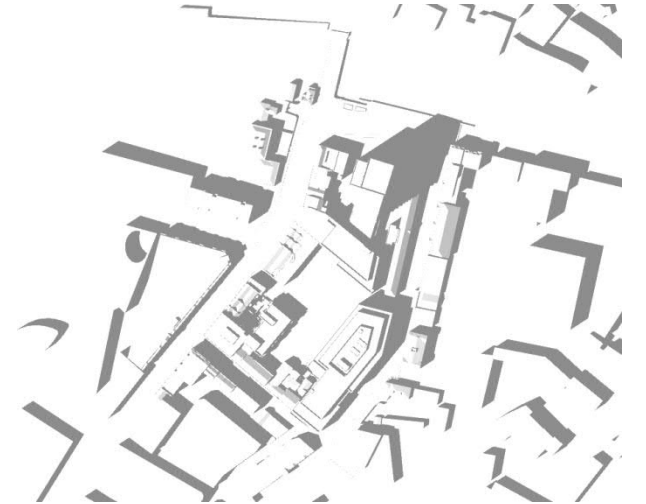
f. 11.00



g. 12.00



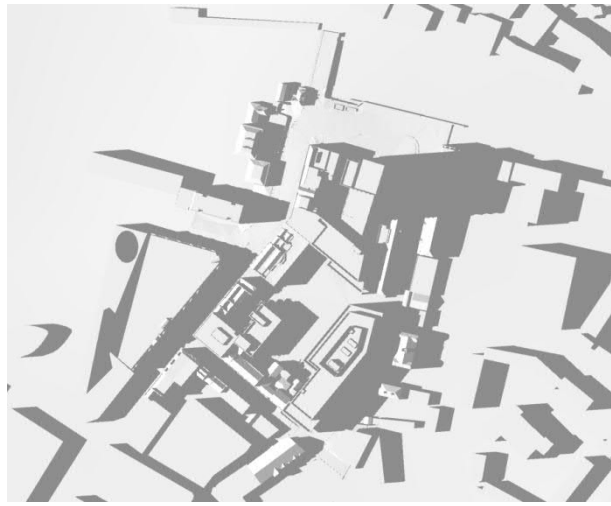
h. 13.00



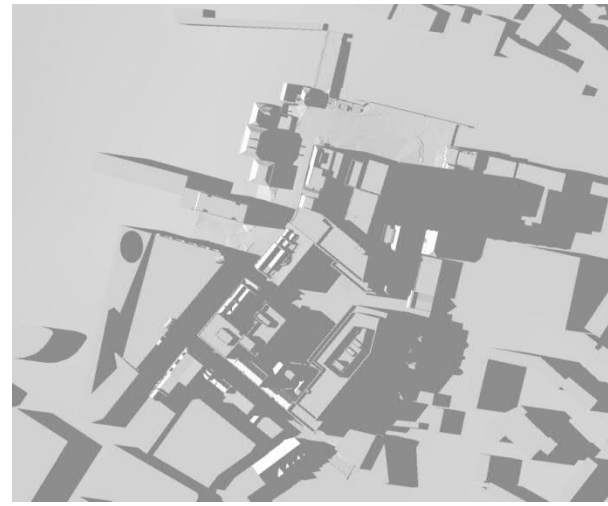
i. 14.00



j. 15.00



k. 16.00



l. 17.00

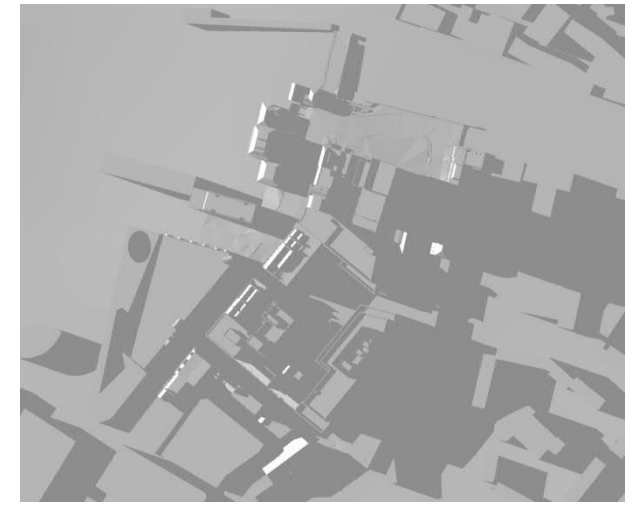


Figure A.19 (a – l) – Sunlight Amenity Areas A1 – A4, 21 December, Proposed Conditions

a. 06.00



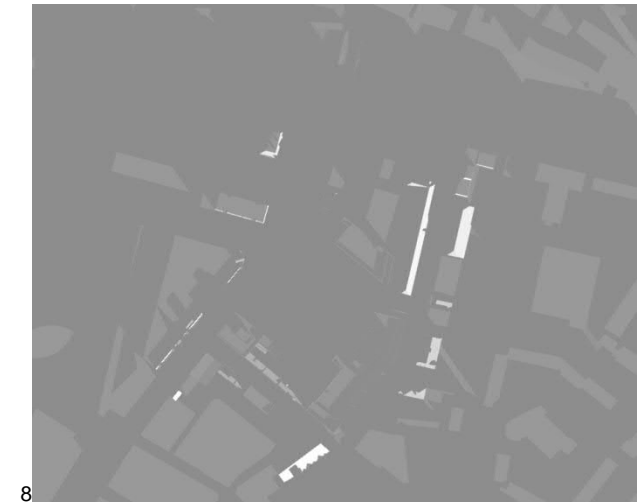
b. 07.00



c. 08.00



d. 09.00



e. 10.00



f. 11.00

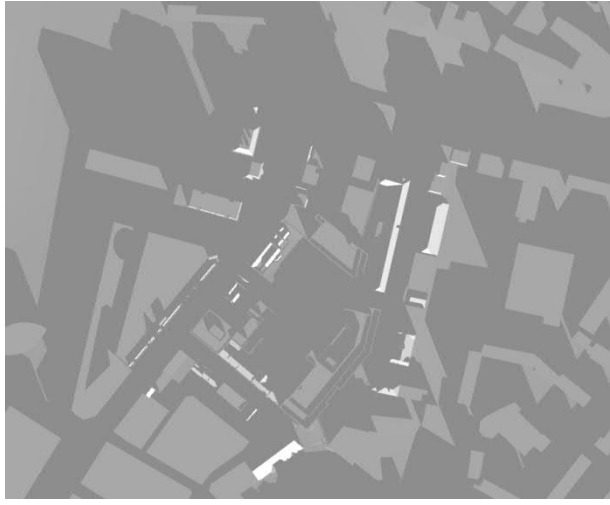


g. 12.00

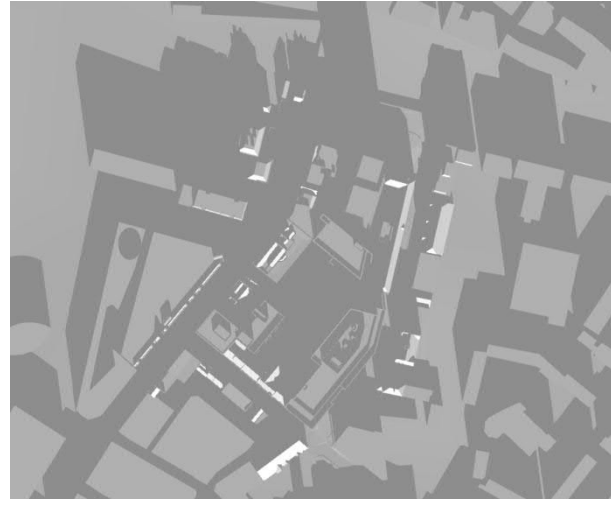


h. 13.00

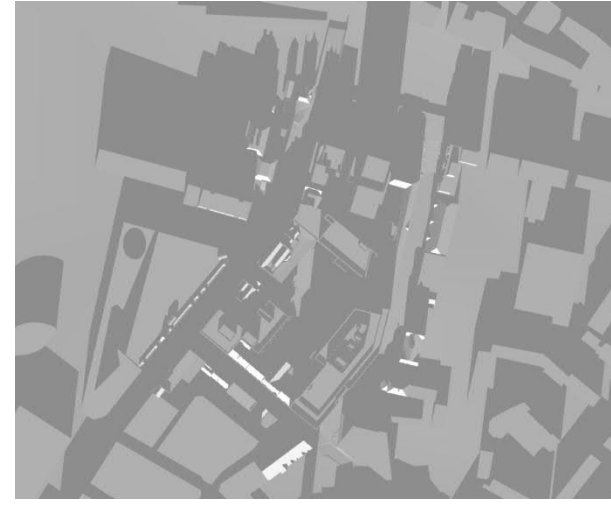




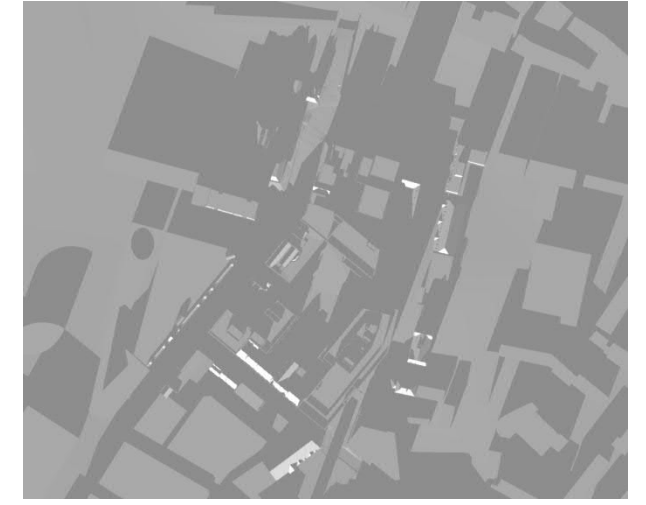
i. 14.00



j. 15.00



k. 16.00



l. 17.00

